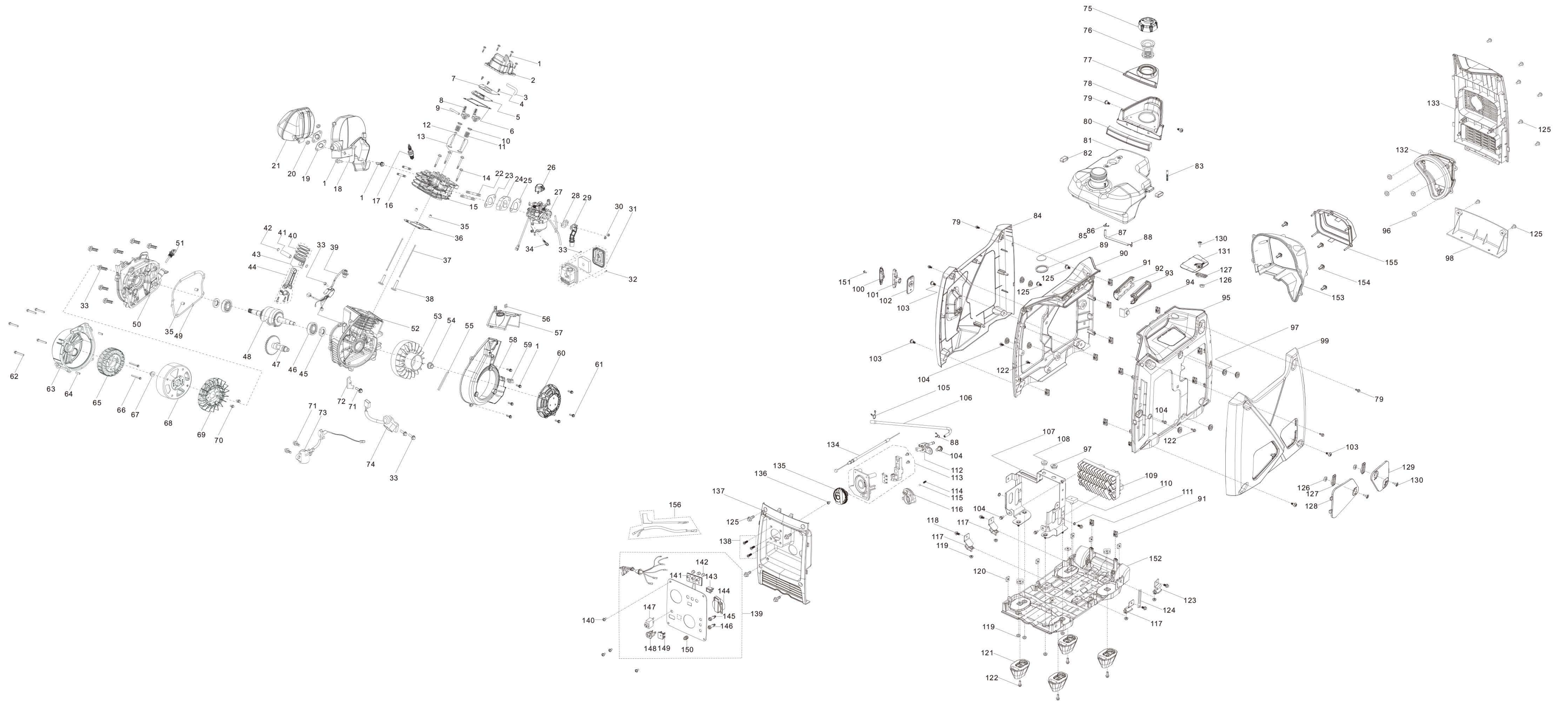


GR2000I EXPLODED VIEW



REF.NO.	PART NO	DESCRIPTION	Q'TY
1	90007-0616-A1A0	BOLT	10
2	12410-Z800110-00A0	COVER SUBASSEMBLY, CYLINDER HEAD	1
3	17004-Z800110-00A0	TUBE, BREATHER	1
4	90103-0308-51A0	CROSS-RECESSED PAN HEAD SCREW	3
5	11332-Z800110-00A0	GASKET, BREATH GROOVE	1
6	12004-Z800120-00A0	CYLINDER HEAD COVER GASKET	1
7	11320-Z800110-00A0	STOP ENGINE PIECE SUBASSEMBLY	1
8	14310-Z800110-00A0	ROCKER SUBASSEMBLY, VALVE	2
9	14330-Z800110-00A0	SHAFT, VALVE ROCKER	1
10	12112-Z800110-00A0	SEAT, VALVE SPRING	2
11	12103-Z800110-00A0	SPRING, VALVE	2
12	12101-Z800110-00A0	GUIDE, SEAL	1
13	12110-Z800110-00A0	VALVES SET	1
14	12003-Z800110-00A0	CYLINDER HEAD BOLT	4
15	12140-Z800110-00A0	HEAD SUBASSEMBLY, CYLINDER	1
16	90204-Z800210-00A0	STUD BOLT	2
17	30010-Z350210-00A0	PLUG, SPARK	1
18	18013HZ800110-00A0	MUFFLER COVER	1
19	18001-Z800110-00A0	GASKET, EXHAUST OUTLET	1
20	90303-0600-31A0	HEXAGON NUT	2
21	18100-Z800310-00A0	MUFFLER ASSY.	1
22	90204-Z800110-00A0	STUD BOLT	2
23	16002-Z800110-00A0	GASKET, CARBURETOR INSULATOR	1
24	16003-Z800110-00A0	PLATE, CARBURETOR INSULATOR	1
25	16001-Z800110-00A0	CARBURETOR SEAL GASKET	1
26	14411-Y2V0110-00A0	CAP	1
27	16100-Z800410-00A0	CARBURETOR ASSY.	1
28	17001-Z800110-00A0	AIR CLEANER SEAL GASKET	1
29	17110-Z800110-00A0	AIR CLEANER INTAKE DUCT ASSEMBLY	1
30	90305-0600-31A0	HEXAGON NUT WITH FLANGE	2
31	17100-Z800110-00A0	AIR CLEANER	1
32	90007-0520-A1A0		1
33	90007-0620-A1A0	BOLT	11
34	16652-Z800110-00A0	STRAINER, FUEL	1
35	90502-0812-00A0	POSITION PIN	4
36	12131-Z800110-00A0	GASKET, CYLINDER HEAD	1
37	14070-Z800110-00A0	LIFTER SUBASSEMBLY, VALVE	2
38	14081-Z800110-00A0	TAPPET, VALVE	2
39	30700-Z800310-00A0	IGNITOR	1
40	13200-Z800110-00A0	RING ASSY, PISTON	1
41	13121-Z800120-00A0	PIN, PISTON	1
42	13122-Z800120-00A0	CLIP, PISTON PIN	2
43	13111-Z800110-00A0	PISTON	1
44	13010-Z800110-00A0	ROD, CONNECTING	1
45	90682-Z800110-00A0	SEAL, OIL	2
46	90547-0204-CLA0	DEEP GROOVE BALL BEARING	2
47	14200-Z800110-00A0	CAMSHAFT ASSY.	1
48	13300-Z800110-00A0	CRANKSHAFT ASSY.	1
49	11001-Z800110-00A0	GASKET, CRANKCASE	1
50	11411-Z800210-00A0	COVER, CRANKCASE	1
51	15010-Z800131-Q5A0	DIPSTICK SUBASSEMBLY, OIL	1
52	11310-Z800110-00A0	CRANKCASE SUBASSEMBLY.	1
53	13510-Z800110-00A0	FLYWHEEL SUBASSEMBLY	1
54	13501-Z510110-00A0	NUT, FLYWHEEL	1
55	19081-Z800110-00A0	STRIP, SHROUD SEAL	1
56	90804-Z800210-00A0	STOP DETENT	1
57	12014-Z800110-00A0	CYLINDER HEAD WIND DEFLECTOR	1
58	28110-Z800110-Q2A0	SHROUD	1
59	17199-Y2V0110-00A0	CLIP NUT	1
60	28200-Z800120-Q2A0	STARTER ASSY, RECOIL	1
61	90001-0612-01A0	BOLT	3

62	90001-0630-01A0	BOLT	5
63	30024-Y2V0210-00A0	SHROUD, MOTOR	1
64	90502-0814-00A0	POSITION PIN	2
65	30120-YC40110-00A1	STATOR SUBASSEMBLY, MAGNETO	1
66	90001-0535-01A0	HEXAGON SOCKET FLANGE FACE BOLT - SMALL SERIES	2
67	90306-1200-31A0	HEXAGON NUT WITH FLANGE	1
68	30110-Y2V0130-00A2	CASE SUBASSEMBLY, MAGNETO ROTOR	1
69	19352-Y2V0110-Q2A0	IMPELLER	1
70	90001-0610-01A0	BOLT	2
71	90007-0612-A1A0	BOLT	3
72	54066-Z800110-00A0	TENSION DISC	1
73	37060-Z800110-00A0	SENSOR, ENGINE OIL	1
74	30400-Z800210-00A0	COIL, IGNITION	1
75	16730-YB00110-Q2A0	COVER, FUEL TANK	1
76	16652-Y5V0110-00A0	STRAINER, FUEL	1
77	16641-YB00110-00A0	SLEEVE, FILLING OIL HOLE RUBBER	1
78	80094-YB00210-Q2A0	FRONT APPEARANCE COVER PLATE	1
79	90208-YB00210-00A0	HEXAGONAL STEP BOLT	6
80	80023-YB00110-Q2A0	PLATE, FRONT PANEL DECORATED	1
81	16620-YB00210-Q2A0	FUEL TANK	1
82	90683-Y2V0110-00A0	BUSH	2
83	16514-Y2V0110-00A0	ELEMENT, STRAINER	1
84	80092HYB00110-WMA0	LEFT HOUSING COVER PLATE	1
85	37205-Y2V0310-00A0	OPENING, OIL LEVERLER VIEW	1
86	90685-Y2V0110-00A0	PIPE CLAMP	1
87	90686-YB00210-00M0	TUBE, FUEL	1
88	90685-Z030610-00A0	PIPE CLAMP	2
89	30431-YB00110-00A0	JACKET, RUBBER	1
90	80091HYB00110-Q2A0	LEFT HOUSING	1
91	17199-Y2V0110-00A0	CLIP NUT	12
92	54101-YB00210-Q2A0	SLEEVE, HANDLE RUBBER	1
93	54101-YB00310-Q2A0	SLEEVE, HANDLE RUBBER	1
94	50033-Y2V0110-00A0	CUSHION, ENGINE UPPER SUSPENSION RUBBER	1
95	80095HYB00110-Q2A0	RIGHT HOUSING	1
96	37073-Y2V0110-00A0	SPRING CLAMP	4
97	16601-Y2V0210-00A0	SLEEVE, FUEL TANK RUBBER	9
98	82007-YB00110-Q2A0	COVER, DECORATED	1
99	80096HYB00110-WMA0	RIGHT APPEARANCE COVER PLATE	1
100	28212-YB00120-Q2A0	CORE, CABLE HANDLE	1
101	28211-YB00120-00A0	SLEEVE, CABLE HANDLE OUTER	1
102	28004-YB00110-Q2A0	GUIDE SUBASSEMBLY, STARTING ROPE	1
103	90208-YB00110-00A0	HEXAGONAL STEP BOLT	4
104	90001-0612-01A0	BOLT	7
105	90685-Z020110-00A0	PIPE CLAMP	1
106	90686-YB00310-00M0	TUBE, FUEL	1
107	30081-YB00110-H7A0	INVERTOR MOUNTING RACK	1
108	16601-Y2V0110-00A0	SLEEVE, FUEL TANK RUBBER	1
109	30043-YC40710-00A0	INVERTOR	1
110	50035-YB00110-00A0	BUFFERING PAD SUPPORT	1
111	90415-0600-Z1A0	EXTERNAL TEETH SERRATED LOCK WASHER	2
112	16750-Y2V0141-00A0	COCK ASSY, FUEL	1
113	35160-YB00110-00A0	SWITCH SUBASSEMBLY	1
114	16527-Y2V0210-00A0	SPRING, STOPPER ADJUSTING	1
115	90543-0500-00A0	BALL, STEEL	1
116	94111-Y2V0410-00A0	COVER PLATE	1
117	51005-Y2V0110-00A0	CUSHION, ENGINE FRAME	3
118	90001-0614-01A0	BOLT	4
119	90305-0600-31A0	HEXAGON NUT WITH FLANGE	8
120	90326-Y2V0110-00A0	NUT	10
121	51014HYB00110-00A0	SEAT, ENGINE FRAME SHOCK ABSORPTION	4
122	90001-0616-01A0	BOLT	6
123	51005HYB00110-00A0	CUSHION, ENGINE FRAME	1
124	90684-Z030120-00A0	WIRE CLIP	1
125	90208-YB00410-00A0	HEXAGONAL STEP BOLT	14
126	90341-YA50110-00A0	NYLON NUT	3
127	24329-Y9T0120-Q2A0	STOPPER	3
128	82036HYB00110-WMA0	COVER, LEFT SIDE	1

129	82061HYB00110-WMA0	COVER, RIGHT SIDE	1
130	90208-Y9T0120-00A0	HEXAGONAL STEP BOLT	3
131	80102HYB00110-Q2A0	SPARK PLUG ACCESS DOOR	1
132	53202-YB00110-00A0	CUSHION, JOINT RUBBER	1
133	18002HYB00110-Q2A0	COVER, MUFFLER SIDE	1
134	16080-Y2V0110-00A0	HANDLE SUBASSEMBLY, CHOKE	1
135	35643-Y2V0210-Q2A0	KNOB	1
136	90103-0416-51A0	CROSS-RECESSED PAN HEAD SCREW	1
137	35680-YB00110-Q2A0	SEAT, PANEL	1
138	90129-0416-01A0	CROSS-RECESSED COUNTERSUNK HEAD TAPPING SCREW	3
139	35610-YC41510-H3A0	PANEL SUBASSEMBLY, CONTROL	1
140	90134-YB00110-00A0	CROSS HEXAGON HEAD PAN BOLT	4
141	35620-YAY0110-0000	STATUS DISPLAY BOARD ASSEMBLY	1
142	37099-Y2V0110-0000	INDICATOR MOUNTING BASE	3
143	35160-Y0G0110-0000	SWITCH SUBASSEMBLY	1
144	35614-Y020110-0000	SOCKET SUBASSEMBLY, POWER SUPPLY	1
145	35614-Y2P0210-0000	PARALLEL SOCKET	1
146	35614-Y2P0310-0000	PARALLEL SOCKET	1
147	31234-Y4D0210-0000	PROTECTOR, OVERCURRENT	1
148	35619-Y2V0110-0000	SOCKET SUBASSEMBLY, D.C	1
149	35621-Y020110-0000	BRIDGE, RECTIFICATION	1
150	35629-YB00110-0000	TERMINAL SUBASSEMBLY, GROUNDING	1
151	90104-0512-53A0	BOLT	1
152	51143HYB00110-Q2A0	PLATE, BOTTOM	1
153	18109-Z800110-00A0	SHROUD, MUFFLER	1
154	90107-0516-01A0	CROSS-RECESSED PAN HEAD SELF-TAPPING SCREW	5
155	18002-Z800110-00A0	COVER, MUFFLER SIDE	1
156	35660-YB00220-00A0	HARNESS, CONTROL PANEL WIRING	1