

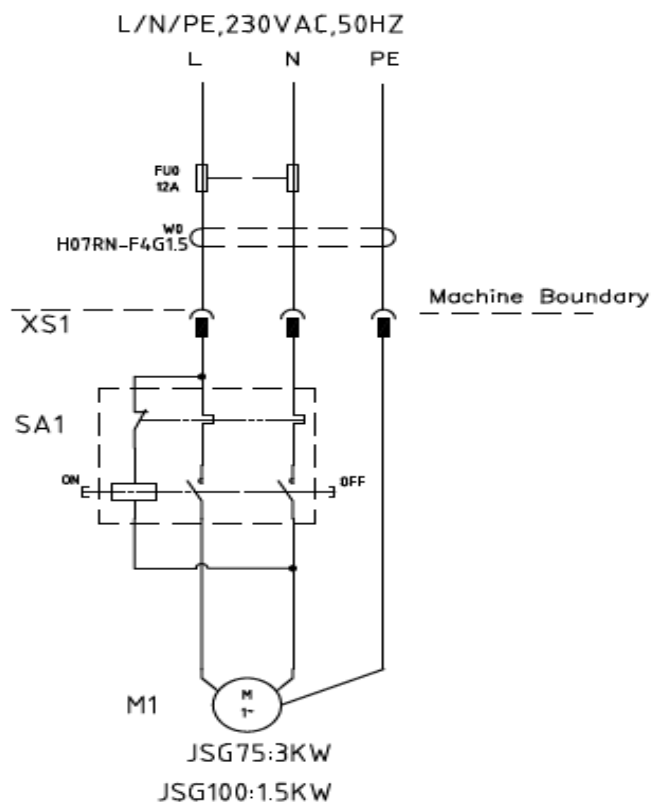
# Attached technical data&parts list of Belt Grinder

## 1 Technical Features

	JSG100
Rated voltage(V)	230V
Rated frequency (Hz)	50HZ
Motor(kW)	750W
Belt speed (m/s)	19
Belt Size(mm)	100X1220
Weight(kg)	44
WxHxL(mm)	630 X 410 X 355(body)

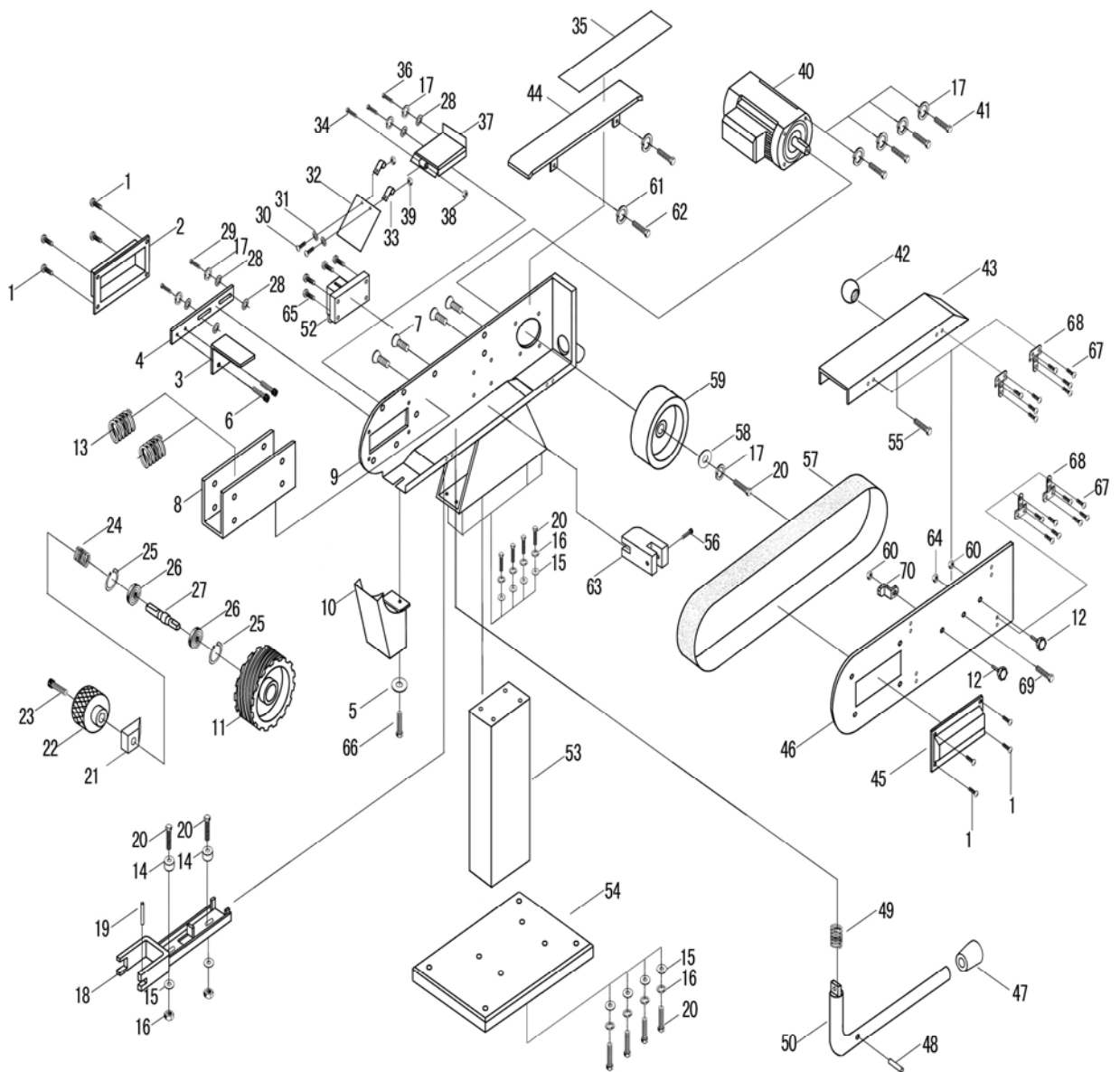
## 2 Electrical drawings and components list

For JSG100/230V, the electrical drawing as follow:



Electrical Part Lists for JSG100						
No.	Code	Part	Type	Specification	Manufacturer	Approval
1		Cable	H07RN-F	4*1.5mm <sup>2</sup>	HELUKABEL	TUV
2		Metric bushing	HSK-Flex	PG9 M16X1.5	HUMMEL	VDE
3		Internal wire	AVLV8		Wuxi Baiyun Wire&Cable Co., Ltd.	UL

### 3 Part list (Mechanical)



For JSG100  
Part list

PART NO.	DESCRIPTION	QTY	REMARKS	PART NO.	DESCRIPTION	QTY	REMARKS
1	CUP HEAD SCREW M4X6	8		31	FLAT WASHER $\Phi$ 4	2	
2	LEFT COVER	1		32	PERSPECTIVE PLATE	1	
3	WORK TABLE	1		33	COLLECTING BOARD	2	
4	FIXATION BOARD OF WORK TABLE	1		34	CUP HEAD SCREW M6X50	1	
5	FLAT WASHER $\Phi$ 8	1		35	BLACK LEAD PLATE	1	
6	HEXAGONAL SOCKET SCREW M6X10	2		36	BOLT M8X12	2	
7	HEADING-EXTRUSION SCREW M8X16	4		37	FENCE EXTENSIONS	1	
8	STOP BLOCK	1		38	SELF-LOCKINGNUT M6	1	
9	BODY	1		39	NUT M4	2	
10	DUST RECEIVER	1		40	MOTOR	1	
11	DRIVEN WHEEL	1		41	BOLT M8X20	4	
12	SCREW M6X12	2		42	HAND BALL	1	
13	SPRING	2		43	SAFETY GUARD	1	
14	POSITION TUBE	2		44	SUPPORT PLATE	1	
15	FLAT FASHER $\Phi$ 8	12		45	RIGHT COVER	1	
16	NUT M8	2		46	SIDE FENCE	1	
17	ELASTIC WASHER $\Phi$ 8	23		47	PROPECT TUBE	1	
18	DRIVEN WHEEL GUIDE	1		48	PIN 3X20	1	
19	COLUMNAR PIN $\Phi$ 5X35	1		49	SPRING	1	
20	BOLT M8X20	5		50	HAND BAR	1	
21	SHAFT BLOCK	1		51	BASE (DELETE)	1	
22	HAND WHEEL	1		52	SWITCH	1	
23	HEXAGONAL SOCKET SCREW M6X30	1		53	STAND	1	
24	SPRING	1		54	STAND PLATE	1	
25	RETAINING RING $\Phi$ 47	2		55	SCREW 6X16	1	
26	BEARING 204	2		56	HEXAGONAL SOCKET SCREW M5X20	1	
27	DRIVEN WHEEL SHAFT	1		57	SAND BELT	1	
28	BIG FLAT WASHER $\Phi$ 8	6		58	BIG WASHER $\Phi$ 32	1	
29	BOLT M8X20	2		59	DRIVE WHEEL	1	
30	CUP HEAD SCREW M4X10	2		60	SELF LOCK NUT M6	2	
PART	DESCRIPTION	QTY	REMARKS	PART	DESCRIPTION	QTY	REMARKS

NO.				NO.			
61	ELASTIC WASHER $\Phi 8$	2		66	BOLT M6X12	1	
62	BOLT M8X12	2		67	CUP HEAD SCREW M4X6	16	
63	HAND BAR COLLECTING ROD	1		68	HINGE	4	
64	SELF- LOCK NUT M6	1		69	BOLT M6X18	1	
65	SCREW	4		70	SPRING PLATE	1	