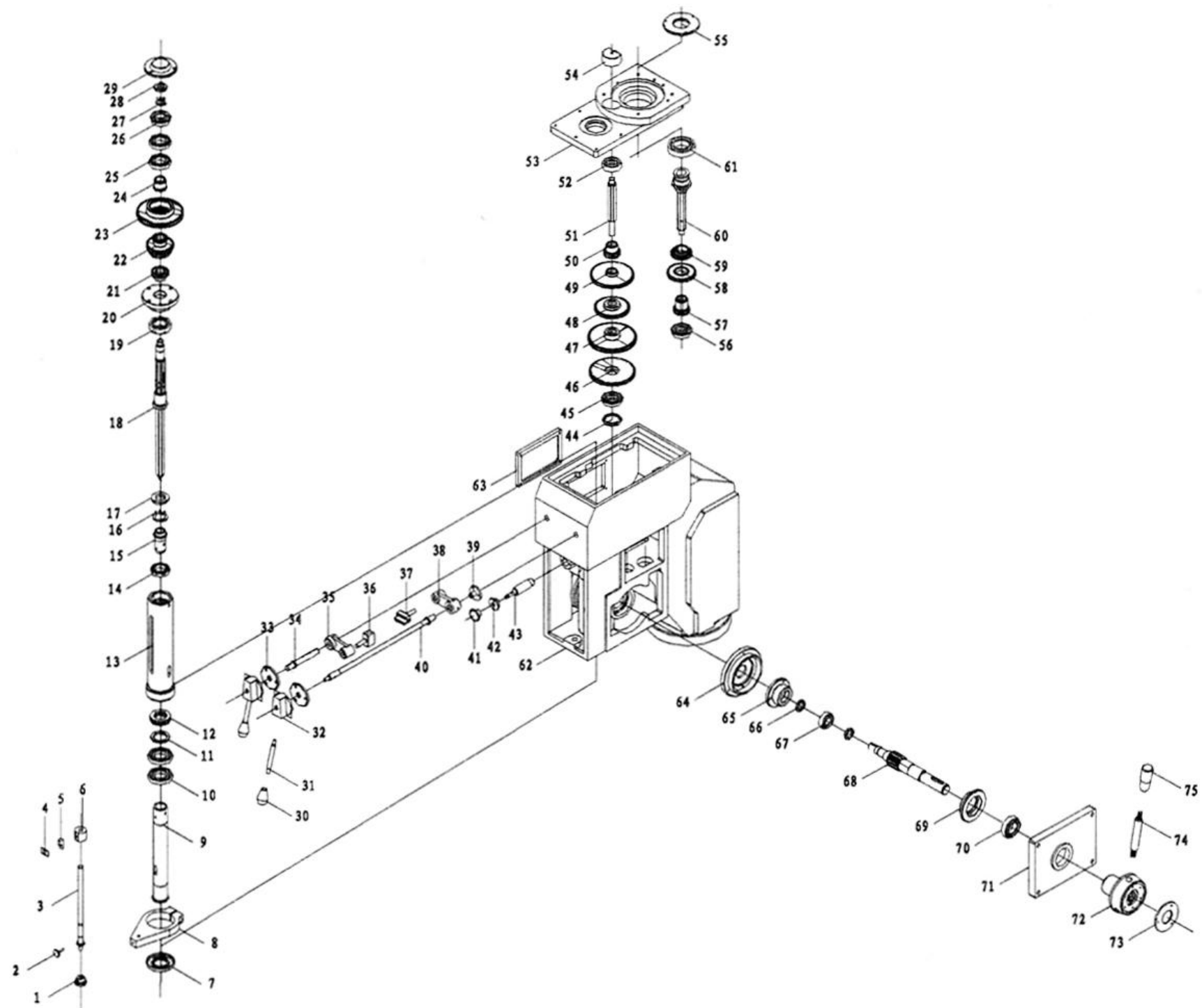


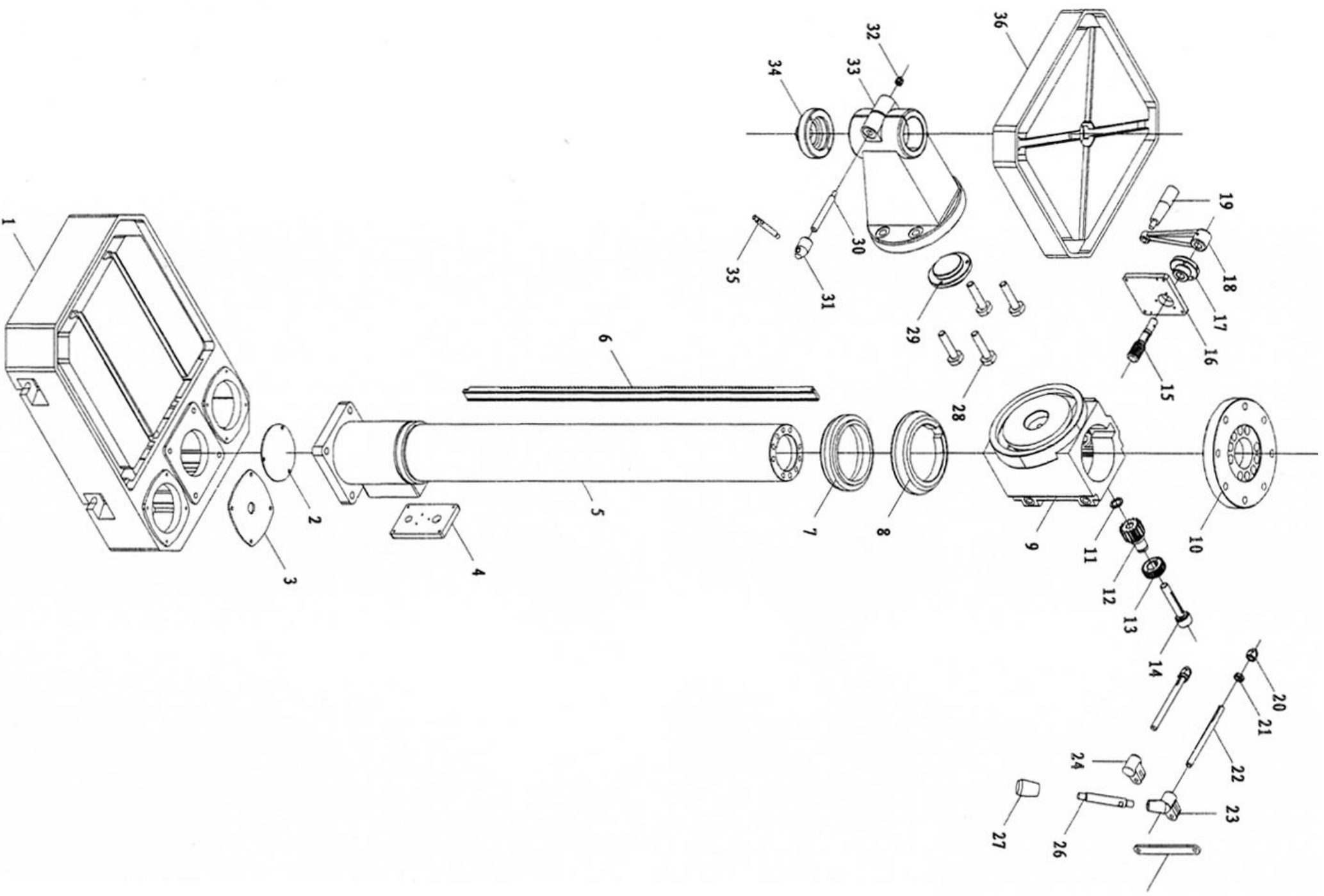
Spareparts



TANDWIELAANGEDREVEN KOLOMBOORMACHINE
FOREUSE A ENTRAINEMENT PAR ENGRENAGE GT 35 **CE**

Bestelnr./N° de cde. 35064





GT 35				
No.	Parts number	Name of the parts	Q'ty	Remarks
1	32001/ZS5030	Knurled knob	1	
2	32002/ZS5030	Knurled screw bolt	1	
3	32005/ZS5025	Scaled bolt	1	
4	35001/ZS5030	Scaled indicator sheet	1	
5	32004/ZS5030	Support for the indicator	1	
6	31003/ZS5025	Scaled nut	1	
7	32003/ZS5025	Bearing cover	1	
8	31002/ZS5025	Scale clamper	1	
9	32002/ZS5025	Main spindle	1	
10	D7000107; GB276	Bearing	2	
11	32004/ZS5025	Washer	1	
12	8107; GB301	Bearing	1	
13	32001/ZS5025	Spindle quill	1	
14	D1000906; GB276	Bearing	1	
15	32040/ZS5030	Spine sleeve	1	
16	32041/ZS5030	Washer	1	
17	32043/ZS5030	Nut	1	
18	32006/ZS5025	Transmission shaft	1	
19	2007106; GB297	Bearing	1	
20	32046/ZS5030	Bearing seat	1	
21	32006/ZS5030	Gear	1	
22	32008/ZS5030	Gear	1	
23	32007/ZS5030	Bushing	1	
24	7000106; GB276	Bearing	2	
25	50204; GB277	Bearing	1	
26	18; GB858	Washer	1	
27	M18X1.5; GB812	Nut	1	
28	31004/ZS5030	Cover	1	
29	1.222/40-M8; 21101	Knob	2	
30	32032/ZS5030	Lever	2	
31	32031/ZS5030	Lever seat	2	
32	32030/ZS5030	Positioning Washer	1	
33	32028/ZS5030	Washer	1	
34	32029/ZS5030	Short fork shaft	1	
35	31013/ZS5030	Lever	1	
36	34007/ZS5030	Front fork	1	

GT 35				
No.	Parts number	Name of the parts	Q'ty	Remarks
37	34008/ZS5030	Rear fork	1	
38	31013/ZS5030	Lever	1	
39	31014/ZS5030	Shaft sleeve	1	
40	32033/ZS5030	Long fork shaft	1	
41	M8X32; GB4141.27	Knurled handle	1	
42	32045/ ZS5030	Bushing	1	
43	32044/ ZS5030	Positioning shaft	1	
44	31008/ ZS5030	Cover	1	
45	50303; GB277	Bearing	1	
46	31004/ ZS5025	Feed gear	1	
47	32016/ ZS5030	Gear	1	
48	32014/ ZS5030	Gear	1	
49	32010/ ZS5030	Gear	1	
50	32009/ ZS5030	Gear	1	
51	32008/ ZS5025	Spline shaft	1	
52	303; GB276	Bearing	1	
53	31007/ ZS5030	Cover	1	
54	31005/ ZS5030	Bearing cover	1	
55	31006/ ZS5030	Bearing cover	1	
56	50303; GB277	Bearing	1	
57	32013/ ZS5030	Gear	1	
58	32012/ ZS5030	Gear	1	
59	32011/ ZS5030	Gear	1	
60	32007/ ZS5025	Spline shaft	1	
61	108; GB276	Bearing	1	
62	31001/ZS5025	Spindle box	1	
63	31006/ ZS5025	Cover	1	
64	31011/ ZS5030	Spring box cover	1	
65	32027/ ZS5030	Bearing cover	1	
66	32024/ ZS5030	Washer for adjusting	2	
67	104; GB276	Bearing	1	
68	32023/ ZS5030	Cross shaft	1	
69	32022/ ZS5030	Bearing cover	1	
70	106;GB276	Bearing	1	
71	31005/ZS5025	Side cover	1	
72	32021/ZS5030	Lever seat	1	

GT 35				
No.	Parts number	Name of the parts	Q'ty	Remarks
73	32020/ ZS5030	Cover	1	
74	32019/ZS5030	Handle lever	3	
75	35002/ ZS5030	Nip	3	