
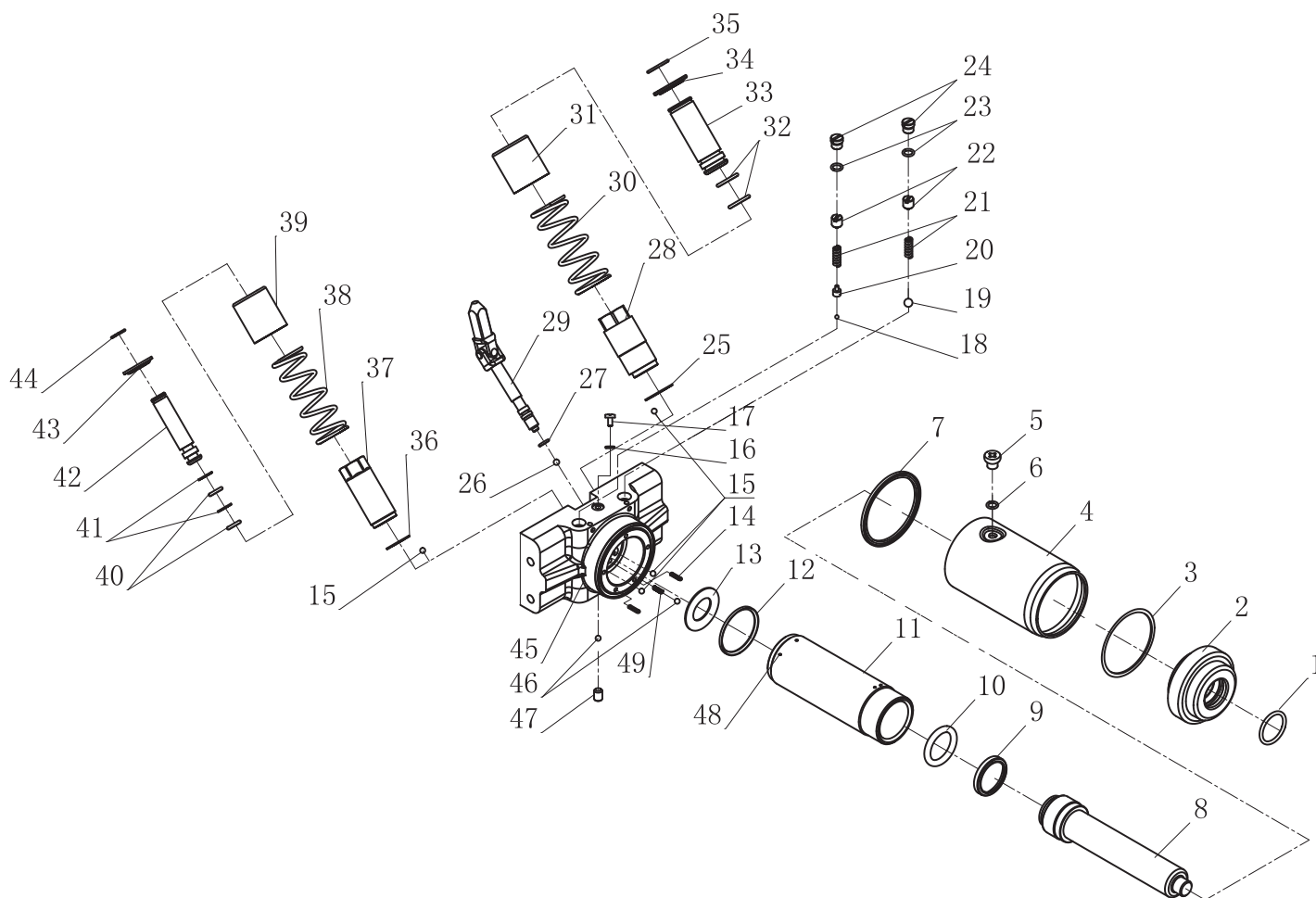


Pos.	Artikelnr.	Description	Anz.
27	8958000327	FRAME	1
43	8958000343	RUBBER PAD (SET OF 5)	1
35	8958000335	PUMP COMPLETE	1

A	8958000400	FRONT WHEEL KIT(2)	
		Include 30(x2), 31(x2), 32(x2)	
B	8958000401	BACK WHEEL KIT(2)	
		Include 16(x2), 17(x2), 18(x2)	
C	8958000402	ADJUST PLATE KIT	
		Include 24(x2), 25(x2), 28(x2), 29(x2), 33, 34	
D	8958000403	SADDLE KIT	
		Include 41, 42	
E	8958000404	SHAFT KIT(2)	
		Include 44(x2), 46	
F	8958000405	ROD KIT(2)	
		Include 21(x4), 22(x4), 23(x2)	

G	8958000406	LINK KIT	
		Include 36(x2), 37(x2), 38, 39	
H	8958000407	TOOL TRAY KIT	
		Include 26(x4), 49	
I	8958000408	HANDLE SOCKET KIT	
		Include 6, 7, 15(x2), 19, 20, 47, 48	
J	8958000409	PEDAL KIT	
		Include 8, 9(x2), 10(x2), 11, 12, 13, 14	
K	8958000410	HANDLE KIT	
		Include 1, 2, 3, 4, 5	
L	8958000411	PUMP SCREW KIT	
		Include 10(x4) & 50(x4)	
M	8958000412	LIFTING ARM KIT	
		Include 40 & 45	

	8950900083	Warning Label
	8956200010	Safety Instructions



Pos.	Artikelnr.	Description	Anz.
A	8958000413	PISTON KIT	
		Include 8, 9, 10	
B	8958000414	LOW PRESSURE SAFETY VALVE KIT	
		Include 19, 21, 22, 23, 24	
C	8958000415	HIGH PRESSURE SAFETY VALVE KIT	
		Include 18, 20, 21, 22, 23, 24	
D	8958000416	LOW PRESSURE PUMP KIT	
		Include 15, 25, 28, 30, 31, 32(x2), 33, 34, 35	
E	8958000417	HIGH PRESSURE PUMP KIT	
		Include 15, 36, 37, 38, 39, 40(x2), 41(x2), 42, 43, 44	

Pos.	Artikelnr.	Description	Anz.
F	8958000418	RELEASE VALVE KIT	
		Include 26, 27, 29	
G	8958000419	GUIDE KIT	
		Include 1, 2	
H	8958000420	HOLDER KIT	
		Include 16, 17	
I	8958000421	AIR VENT SCREW KIT	
		Include 5, 6	
J	8958000422	VALVE BLOCK KIT	
		Include 13, 14(x2), 15(x2), 45, 46, 49	
K	8958000423	CYLINDER KIT	
		Include 11, 12, 48(x2)	
L	8958000424	OIL RESERVOIR KIT	
		Include 3, 4, 7	
M	8958000425	PLUG KIT	
		Include 46, 47	
GK	8958000426	GASKET KIT	
		Include 1, 3, 6, 7, 9, 10, 12, 13, 23(x2), 27, 32(x2), 40(x2), 41(x2)	
OIL	8950390000	HYDRAULIC OIL	0.25 L



8950900083

Warning Label

8956200010

Safety Instructions