
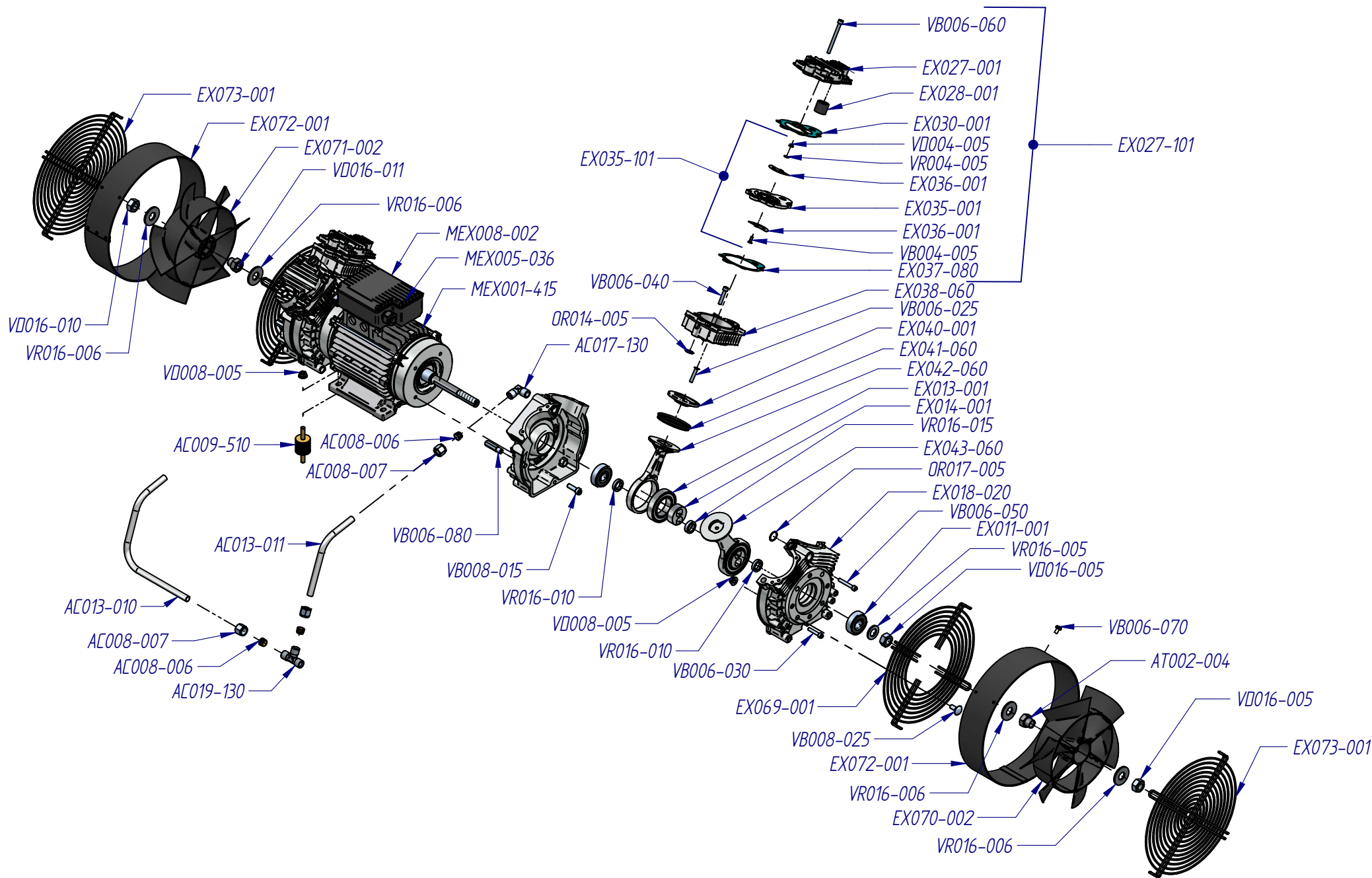


CODE	DESCRIPTION		CODE	DESCRIPTION		CODE	DESCRIPTION	
AC001-010	Pressure switch 3/8" start open valve		AC009-511	No-vibration rubber		AC031-500-9010	Metallic base	
AC001-010-004	Pressure switch 3/8" Complete		AC012-206	Rilsan tube		AC034-100-9005	Carry tools	
AC002-051	Pin plug SHUKO 1,5 m		AC014-004	Closure plug		AC034-151-9005	Support carry tools	
AC003-012	Safety valve 8 Bar		AC014-007	Closure plug		DRYER 400	Dryer 400	
AC004-001	Pressure regulator MIGNON Pos.1		AC014-101	Closure plug		OR058-005	O-ring	
AC005-001	Manometer 40mm 1/4" Bar/Psi		AC015-002	Nipple		VB006-040	Screw	
AC005-011	Manometer 50mm 1/4" Bar/Psi		AC016-224	Reduction		VB008-016	Screw	
AC006-004	Pin cock 1/4" Male		AC017-102	Pipe fitting "L"		VB012-010	Screw	
AC007-005	Condensate drain valve		AC021-013	Connection		VD006-005	Nut	
AC008-010	Not return valve 3/8"		AC021-017	Screw for wheel		VD008-005	Nut	
AC009-003	Rubber foot with thread		AC024-071	Wheel		VD012-005	Nut	
AC009-301	Plastic plug		AC025-002	Connector for solenoid valve		VR012-010	Washer	
AC009-402	Rubber mats		AC030-901-9010	Tank EXTREME 4D 90L "WHITE"				

CODE	TUBE FOR UNIT PUMP		CODE	TUBE FOR UNIT PUMP		CODE	TUBE FOR UNIT PUMP	
AC026-060	Flexible tube							

<div></div> <div>ATTENZIONE: Il presente disegno è di proprietà della NARDI COMPRESSORI Srl - E' vietato a termine di legge riprodurlo o renderlo noto a terzi senza nostra autorizzazione come da norma 98/71/CE. ATTENTION: NARDI Compressori di NARDI COMPRESSORI Srl is the owner of this drawing. - According to laws is forbidden to reproduce it or make it know to everybody else without our authorization according to standard 98/71/EC.</div>	26736: CM480/8/90W		Codice Disegno e Articolo - Draft and articol Code : EX000-040-03		
			-	-	-
			03	Controllo	30/01/2023
			02	Modifica errore codice e inserimento codice	17/12/2014
			01	Nuovo esploso con Solid Edge	23/07/2014
			00	Prima emissione	12/02/2011
			Rev.	Descrizione - Description	Data
Storico Revisioni - Revision History					



SPARE PARTS			SPARE PARTS			SPARE PARTS		
CODE	DESCRIPTION	Serv	CODE	DESCRIPTION	Serv	CODE	DESCRIPTION	Serv
AC008-006	Ogive for aluminum tube 12mm		EX037-050	Gasket cylinder 0,5		VB004-005	Screw	
AC008-007	Nut for tube 12 mm aluminum		EX037-080	Gasket cylinder 0,8		VB006-005	Screw	
AC009-510	No-vibration rubber		EX038-060	Cylinder		VB006-025	Screw	
AC013-010	Aluminum tube		EX040-001	Piston top		VB006-030	Screw	
AC013-011	Aluminum tube		EX041-060	Piston seal		VB006-040	Screw	
AC017-130	Pipe felling "L"		EX042-060	Connecting rod		VB006-050	Screw	
AC019-130	Pipe felling "T"		EX043-060	Complete connecting rod		VB006-060	Screw	
AT002-004	Nut for plastic fan		EX069-001	Metal cover fan		VB006-080	Screw	
EX011-001	Bearing for compressor monobloc		EX070-002	Plastic fan		VB008-015	Screw	
EX013-001	Bearing for connecting rod		EX071-002	Plastic fan		VB008-025	Screw	
EX014-001	Handspike socket		EX072-001	Metal cover fan		VD004-005	Nut	
EX018-020	Compressor monobloc		EX073-001	Metal protection		VD008-005	Nut	
EX027-001	Head		MEX001-415	Electric motor 2,5 Hp 230 Volt 50 Hz		VD016-005	Nut	
EX027-101	Complete Head		MEX005-016	Condenser 16 µF		VD016-010	Nut	
EX028-001	Filter		MEX005-025	Condenser 25 µF		VD016-011	Nut	
EX030-001	Gasket head		MEX005-036	Condenser 36 µF		VR004-005	Washer	
EX035-001	Valve plate		MEX005-040	Condenser 40 µF		VR016-005	Washer	
EX035-101	Valve plate complete		MEX008-002	Cover condenser		VR016-006	Washer	
EX036-001	Valve		OR014-005	O-ring		VR016-010	Washer	
EX037-030	Gasket cylinder 0,3		OR017-005	O-ring		VR016-015	Washer	