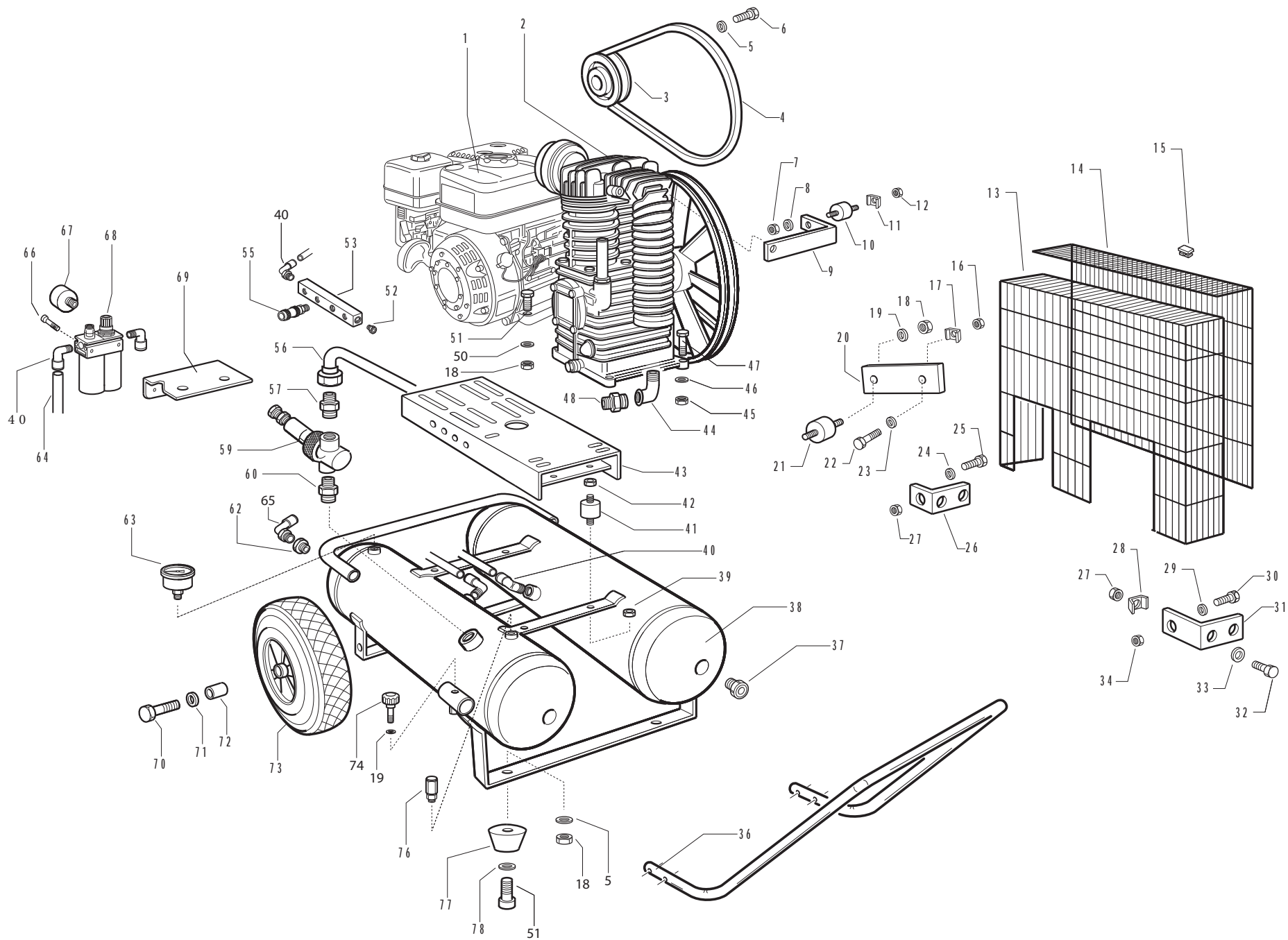


CONTIMAC
e q u i p m e n t

TTS
2255

SPARE PARTS



Rif.	Codice	Descrizione	Description
1	102290055	Motor	Gasoline engine
2	7370004	Testata	Head
3	7301277	Puleggia	Pulley
4	1660457	Cinghia	V-Belt
5	0830601	Rondella	Washer
6	7301813	Vite	Screw
7	0610051	Dado	Nut
8	0830101	Rondella	Washer
9	7301568	Supporto	Support
10	7301028	Antivibrante	Antivibrating
13	7301760	Copricinghia	Belt guard
14	7301759	Copricinghia	Belt guard
15	7301326	Tassello	Cap
17	7301168	Piastrina fissaggio	Fixing plate
18	0610091	Dado	Nut
19	0830131	Rondella	Washer
21	7301650	Antivibrante	Antivibrating
22	0030481	Vite	Screw
25	0030891	Vite	Screw
26	7301302	Supporto	Support
31	7301166	Supporto	Support
36	7308048	Maniglia	Handle
37	7301171	Vite	Screw
38	7308182	Serbatoio	Tank
40	7301876	Raccordo	Connection
43	7308018	Basamento	Pump plate
44	3131085	Curva	Connection
47	0030921	Vite	Screw
48	7301739	Nipples	Nipples
52	7301575	Vite	Screw
53	7301939	Ripartitore 4 vie	Manifold 4 way
55	7350122	Rubinetto rapido	Universal faucet
56	7301848	Tubo flessibile	Flexible pipe
57	7301176	Nipples	Nipples
59	7301587	Valvola pilota	Pilot valve
60	3140231	Nipples	Nipples
62	7301933	Raccordo	Connection
63	7301800	Manometro	Manometer
64	7301920	Tubo	Pipe
65	7301933	Raccordo	Connection
66	0160351	Vite	Screw
67	7301797	Manometro	Manometer
68	7301790	FRL	FRL
69	7308038	Supporto FRL	FRL Support
70	7301305	Vite	Screw

71	0830171	Rondella	Washer
72	7301716	Distanziale	Spacer
73	7301897	Ruota	Wheel
74	7301321	Leva bloccaggio	Locking lever
76	7301922	Valvola sicurezza	Safety valve
77	7301791	Piede	Foot
78	7301083	Rondella	Washer