

## Spareparts

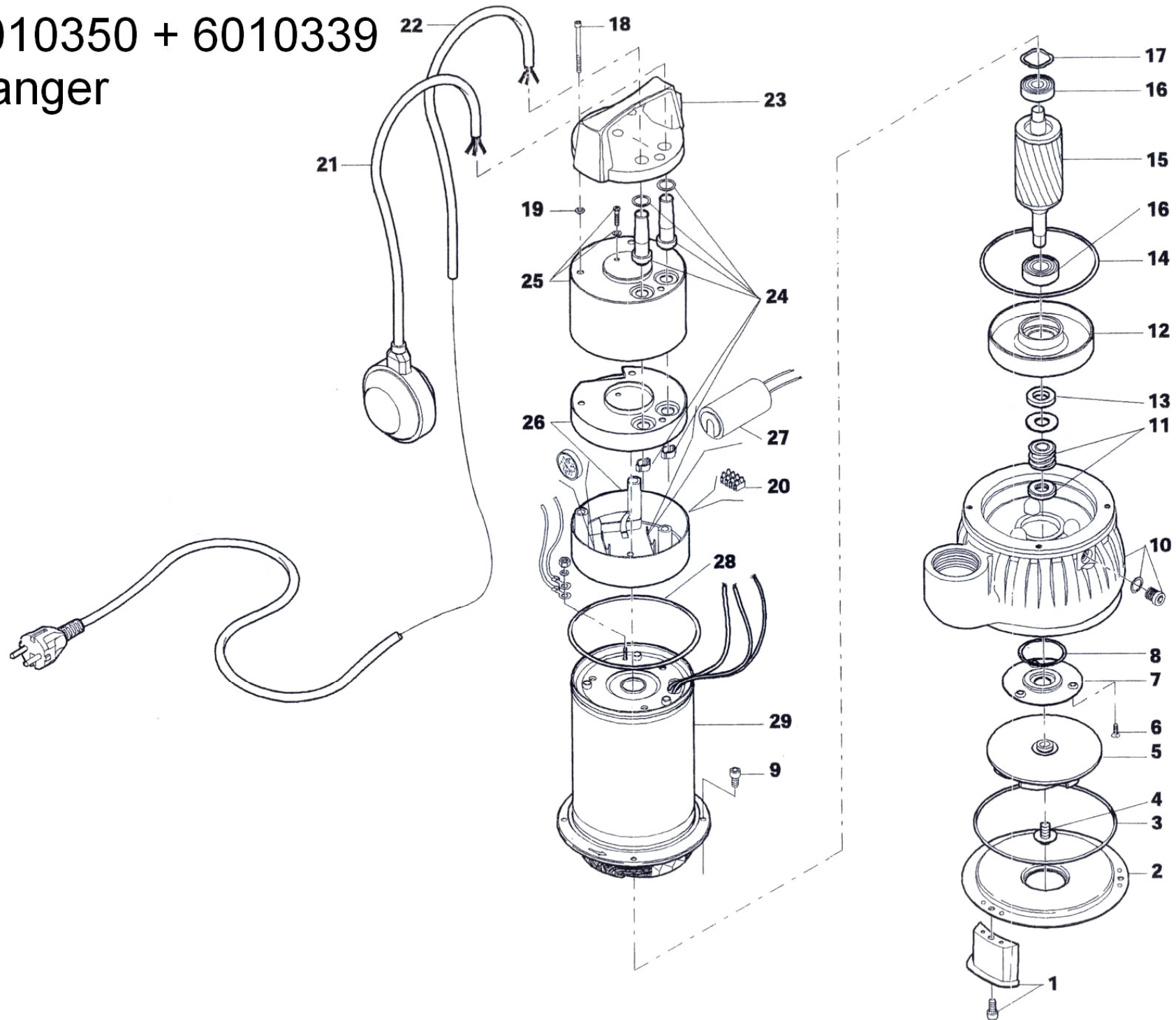


**RANGER AUT**

**CE**

**Bestelnr./N° de cde. 6010350**

# 6010350 + 6010339 Ranger





| N° | Codice<br>Code<br>Reference<br>Codigo | RANGER 8/35 | RANGER 10/35 | RANGER 8/50 | RANGER 10/50 | Descrizione                                  | Description                            | Description                               | Descripción                                 |
|----|---------------------------------------|-------------|--------------|-------------|--------------|--|--|---|---|
| 1  | ASS159TC05                            | ×           | ×            |             |              | Piede di appoggio                            | Supporting foot                        | Pied d'appui                              | Pie de apoyo                                |
| 1  | ASS159TC20                            |             |              | ×           | ×            | Piede di appoggio                            | Supporting foot                        | Pied d'appui                              | Pie de apoyo                                |
| 2  | 159TC11                               | ×           | ×            |             |              | Coperchio di aspirazione                     | Suction cover                          | Couvercle d'aspiration                    | Tapa de aspiración                          |
| 2  | 159TC145                              |             |              | ×           | ×            | Coperchio di aspirazione                     | Suction cover                          | Couvercle d'aspiration                    | Tapa de aspiración                          |
| 3  | 11514201223                           | ×           | ×            | ×           | ×            | Guarnizione OR                               | O-Ring                                 | Joint torique                             | Junta tórica                                |
| 4  | 1160059                               | ×           | ×            | ×           | ×            | Vite con rondella                            | Screw with washer                      | Vis avec rondelle                         | Tornillo con arandela                       |
| 5  | 161GRVI8                              | ×           |              |             |              | Girante                                      | Impeller                               | Roue                                      | Rodete                                      |
| 5  | 161GRVI10                             |             | ×            |             |              | Girante                                      | Impeller                               | Roue                                      | Rodete                                      |
| 5  | 161GRVI85                             |             |              | ×           |              | Girante                                      | Impeller                               | Roue                                      | Rodete                                      |
| 5  | 161GRVI105                            |             |              |             | ×            | Girante                                      | Impeller                               | Roue                                      | Rodete                                      |
| 6  | 1160262                               | ×           | ×            | ×           | ×            | Vite   | Screw                                  | Vis                                       | Tornillo                                    |
| 7  | 859SDI1                               | ×           | ×            | ×           | ×            | Coperchio camera olio                        | Oil chamber cover                      | Couvercle de chambre à huile              | Tapa de la cámara de aceite                 |
| 8  | 11514201458                           | ×           | ×            | ×           | ×            | Guarnizione OR                               | O-Ring                                 | Joint torique                             | Junta tórica                                |
| 9  | 1160280                               | ×           | ×            | ×           | ×            | Vite   | Screw                                  | Vis                                       | Tornillo                                    |
| 10 | 859TC01                               | ×           | ×            |             |              | Corpo pompa                                  | Pump body                              | Corps de pompe                            | Cuerpo bomba                                |
| 10 | 859TC015                              |             |              | ×           | ×            | Corpo pompa                                  | Pump body                              | Corps de pompe                            | Cuerpo bomba                                |
| 11 | 11516151000                           | ×           | ×            | ×           | ×            | Tenuta meccanica Ø 14 mm                     | Mechanical seal Ø 14 mm                | Garniture mécanique Ø 14 mm               | Sello mecánico Ø 14 mm                      |
| 12 | SC07SV1                               | ×           | ×            | ×           | ×            | Coperchio motore                             | Motor cover                            | Flasque arrière                           | Tapa motor                                  |
| 13 | 11514501225                           | ×           | ×            | ×           | ×            | Anello di tenuta                             | Sealing ring                           | Joint a lèvres                            | Anillo de cierre                            |
| 14 | 11514201581                           | ×           | ×            | ×           | ×            | Guarnizione OR                               | O-Ring                                 | Joint torique                             | Junta tórica                                |
| 15 | RFC07S70                              | ×           |              | ×           |              | Albero con rotore                            | Shaft with rotor                       | Arbre avec rotor                          | Eje con rotor                               |
| 15 | RFC07S85                              |             | ×            |             | ×            | Albero con rotore                            | Shaft with rotor                       | Arbre avec rotor                          | Eje con rotor                               |
| 16 | 113002                                | ×           | ×            | ×           | ×            | Cuscinetto a sfere                           | Ball bearing                           | Roulement à billes                        | Rodamiento                                  |
| 17 | 114001                                | ×           | ×            | ×           | ×            | Molla di compensazione                       | Compensation spring                    | Ressort de compensation                   | Muelle de compensación                      |
| 18 | 1160291                               | ×           | ×            | ×           | ×            | Vite   | Screw                                  | Vis                                       | Tornillo                                    |
| 19 | 11514201310                           | ×           | ×            | ×           | ×            | Guarnizione OR                               | O-Ring                                 | Joint torique                             | Junta tórica                                |
| 20 | 114460                                | ×           | ×            | ×           | ×            | Morsettiera                                  | Terminal board                         | Boîte à bornes                            | Placa bornes                                |
| 21 | 50014S71                              | ×           | ×            | ×           | ×            | Galleggiante                                 | Float switch                           | Flotteur                                  | Flotador                                    |
| 22 | 117GLA51L                             | ×           | ×            | ×           | ×            | Cavo di alimentazione con spina              | Supply cable with plug                 | Câble de alimentation avec fiche          | Cable de alimentación con enchufe           |
| 23 | 1199555                               | ×           | ×            | ×           | ×            | Manico                                       | Handle                                 | Poignée                                   | Asa   |
| 24 | 117107MA                              | ×           | ×            | ×           | ×            | Passacavi                                    | Cable grommets                         | Passe câbles                              | Pasacables                                  |
| 25 | 859CSV1C                              | ×           | ×            | ×           | ×            | Coperchio superiore                          | Upper cover                            | Couvercle supérieur                       | Tapa superior                               |
| 26 | 118055A                               | ×           | ×            | ×           | ×            | Coperchi isolanti                            | Insulating covers                      | Couvercles isolantes                      | Tapas aislantes                             |
| 27 | 1110162F                              | ×           |              | ×           |              | Condensatore 16 µF                           | Capacitor 16 µF                        | Condensateur 16 µF                        | Condensador 16 µF                           |
| 27 | 1110202F                              |             | ×            |             | ×            | Condensatore 20 µF                           | Capacitor 20 µF                        | Condensateur 20 µF                        | Condensador 20 µF                           |
| 28 | 11514201579                           | ×           | ×            | ×           | ×            | Guarnizione OR                               | O-Ring                                 | Joint torique                             | Junta tórica                                |
| 29 | CA07VXB0A1                            | ×           |              | ×           |              | Cassa motore con statore avvolto (V 220÷240) | Motor casing with windings (V 220÷240) | Carcasse moteur avec bobinage (V 220÷240) | Caja motor con estator bobinado (V 220÷240) |
| 29 | CA07VXA0A1                            |             | ×            |             | ×            | Cassa motore con statore avvolto (V 220÷240) | Motor casing with windings (V 220÷240) | Carcasse moteur avec bobinage (V 220÷240) | Caja motor con estator bobinado (V 220÷240) |

## VERSIONE TRIFASE - THREE PHASE VERSION - VERSION TRIPHASE - VERSION TRIFASICA

|    |           |  |   |  |   |  |  |   |   |
|----|-----------|--|---|--|---|--|--|---|---|
| 15 | RFC07S71  |  | × |  | × | Albero con rotore                            | Shaft with rotor                       | Arbre avec rotor                          | Eje con rotor                               |
| 22 | 117GOA5LA |  | × |  | × | Cavo di alimentazione                        | Supply cable                           | Câble d'alimentation                      | Cable de alimentación                       |
| 23 | 1199555T  |  | × |  | × | Manico                                       | Handle                                 | Poignée                                   | Asa   |
| 24 | 117107TAI |  | × |  | × | Passacavo                                    | Cable grommet                          | Passe cable                               | Pasacable                                   |
| 25 | 859CSV1CT |  | × |  | × | Coperchio superiore                          | Upper cover                            | Couvercle supérieur                       | Tapa superior                               |
| 29 | CA07VXA0A |  | × |  | × | Cassa motore con statore avvolto (V 380÷415) | Motor casing with windings (V 380÷415) | Carcasse moteur avec bobinage (V 380÷415) | Caja motor con estator bobinado (V 380÷415) |

Con riserva di modifica