



Spareparts

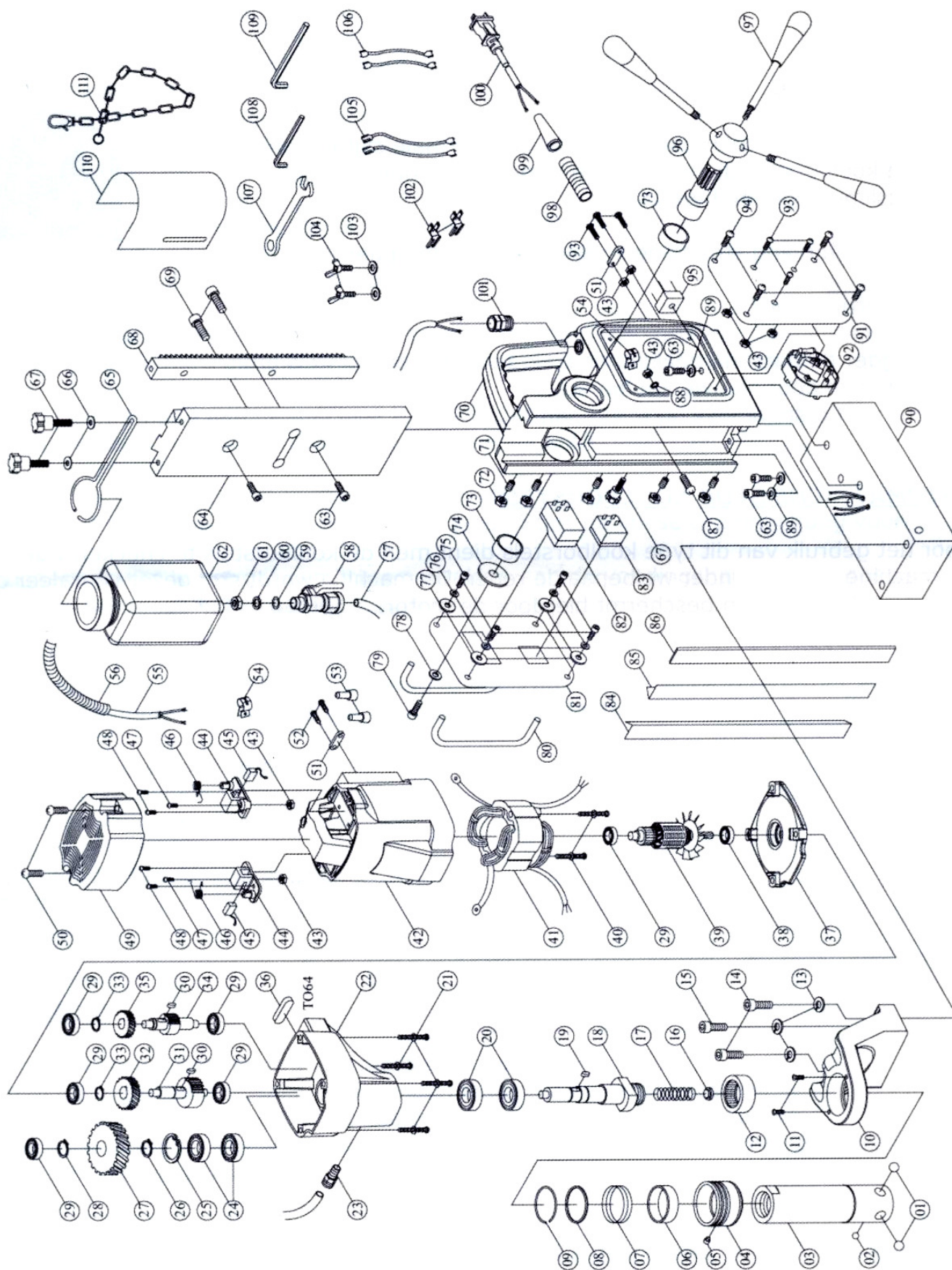


MAGNEETBOORMACHINE 350 N
FOREUSE MAGNETIQUE 350 N

CE

Bestelnr./N° de cde. 40080

MD 350



Item No.	Parts Name	Q'TY	Item No.	Parts Name	Q'TY
1	STAINLESS STEEL BALL $\phi 12$	2	57	COOLANT TUBE	1
2	STAINLESS STEEL BALL $\phi 8$	1	58	COOLANT VALVE	1
3	QUICK RELEASE ARBOR SHAFT	1	59	O-RING 10.7 x 2	1
4	COLLAR	1	60	FLAT WASHER 10 x 23 x 2	1
5	SMALL PIN	1	61	BRASS NUT	1
6	RUBBER RING $\phi 40 \times \phi 44 \times 9$	1	62	COOLANT TANK	1
7	SPRING $\phi 2 \times \phi 43 \times 3 \times 30$	1	63	CAP BOLT M6 x 20	5
8	STEEL RING $\phi 35.1 \times \phi 44.5 \times 2$	1	64	SLIDE PLATE	1
9	C RING $\phi 2 \times \phi 32 \times 3$	1	65	COOLANT TANK BRACKET	1
10	ARBOR SUPPORT BRACKET	1	66	FLAT WASHER M5	2
11	SCREW M5 x 8	2	67	THUMB SCREW M5 x 16	3
12	BEARING HK3516	1	68	GEAR RACK	1
13	SPRING WASHER M8	3	69	CAP BOLT M8 x 16	2
14	CAP BOLT M8 x 55	2	70	STAND BODY	1
15	CAP BOLT M8 x 30	1	71	GIB SET SCREW M5 x 20	5
16	WATER SEAL	1	72	GIB LOCK NUT M5	5
17	SPRING	1	73	BUSHING $\phi 32 \times \phi 28 \times 12$	2
18	SPINDLE	1	74	FLAT WASHER $\phi 40 \times \phi 6 \times 3$	1
19	WOODRUFF KEY 5 x 5 x 10	1	75	SCREW M4 x 16	4
20	OIL SEAL $\phi 28 \times \phi 40 \times 7$	2	76	SPRING WASHER M4	4
21	SCREW M5 x 70	4	77	FLAT WASHER M4	4
22	GEAR CASE	1	78	FLAT WASHER $\phi 6 \times \phi 25 \times 1$	1
23	COOLANT CONNECTOR	1	79	CAP BOLT M6 x 16	1
24	BEARING 6003ZZ	2	80	SWITCH GUARD BAR	2
25	INTERNAL CIR CLIP R35	1	81	SWITCH PANEL	1
26	EXTERNAL CIR CLIP S17	1	82	MOTOR SWITCH	1
27	OUTPUT GEAR 37T	1	83	MAGNET SWITCH	1
28	EXTERNAL CIR CLIP S15	1	84	GIB WEAR STRIP - LEFT	1
29	BEARING 608ZZ	6	85	GIB WEAR STRIP - RIGHT	1
30	WOODRUFF KEY 4 x 4 x 8	2	86	GIB TENSIONER 260 x 11 x 2.3	1
31	INTERMEDIATE GEAR PINION 12T	1	87	SCREW M4 x 12	1
32	INTERMEDIATE GEAR 34T	1	88	SUN WASHER M5	1
33	EXTERNAL CIR CLIP S10	2	89	SPRING WASHER M6	3
34	MAINSHAFT PINION 9T	1	90	MAGNET BASE 164 x 80 x 48	1
35	INPUT GEAR 30T	1	91	SIDE PANEL	1
36	WOODRUFF KEY 4 x 4 x 30	1	92	OVER LOAD PROTECTION (OPTIONAL)	1
37	GEAR PLATE	1	93	SCREW M4 x 25	6
38	BEARING 6001 2RS	1	94	SCREW M4 x 8	4
39	ARMATURE 7T	1	95	RECTIFIER & EMC	1
40	SCREW M5 x 60	2	96	CRANK SPINDLE	1
41	STATOR	1	97	CRANK HANDLE	3
42	MOTOR HOUSING	1	98	STRAIN RELIEF	1
43	NUT M4	8	99	CORD ARMOR	1
44	BRUSH HOLDER	2	100	POWER SUPPLY CABLE	1
45	CARBON BRUSH 7 x 11	2	101	CABLE GLAND	1
46	BRUSH SPRING	2	102	WIRE CONNECTOR	2
47	SCREW M4 x 10	2	103	FLAT WASHER M6	2
48	SCREW M4 x 12	4	104	BUTTERFLY SCREW M6 x 10	2
49	MOTOR TAIL COVER	1	105	LEAD WIRE	2
50	SCREW M4 x 25	2	106	LEAD WIRE	2
51	CABLE CLIP	2	107	WRENCH M8	1
52	SCREW M4 x 14	2	108	HEX. WRENCH M2.5	1
53	WIRE CONNECTOR C4	2	109	HEX. WRENCH M4	1
54	CABLE CLAMP	2	110	CHIP GUARD	1
55	MOTOR CABLE	1	111	SAFETY CHAIN	1
56	CABLE PROTECTOR	1			