



Spareparts

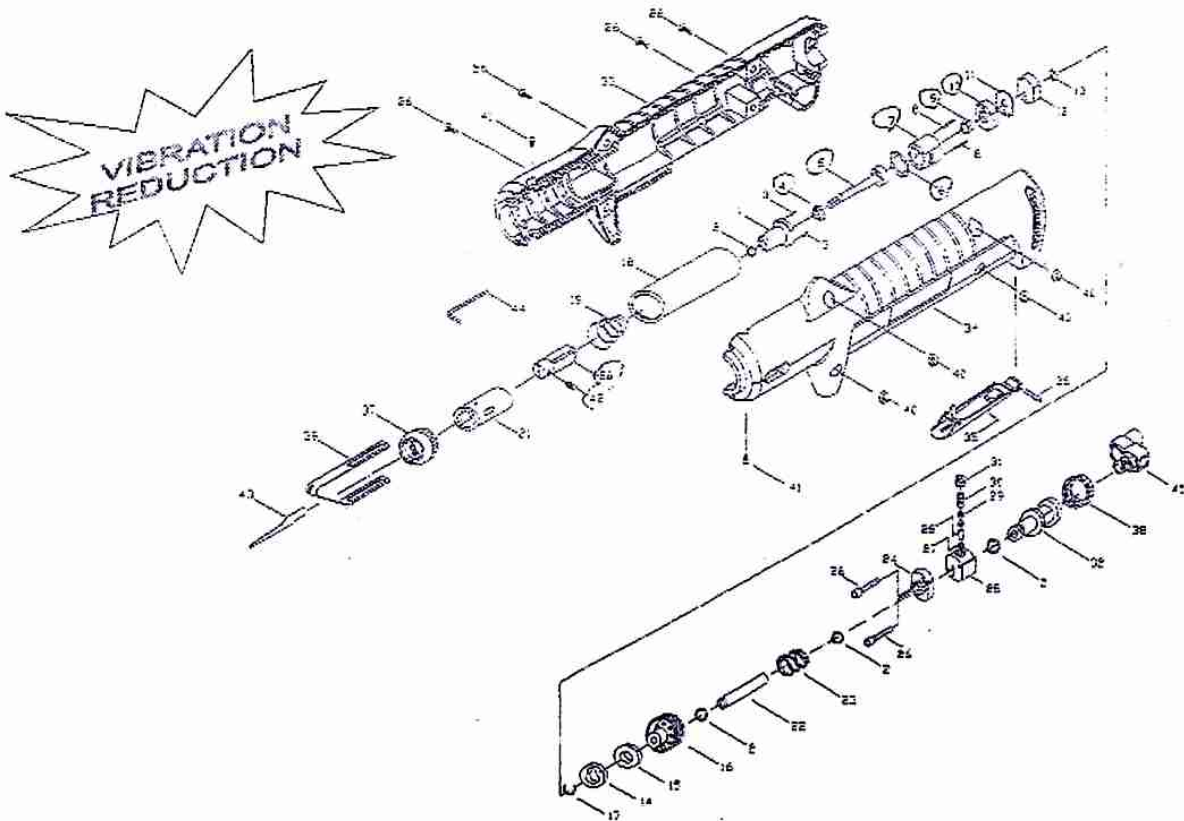


METAALZAAG COMPOSITET

SCIE A METAUX COMPOSITE

CE

Bestelnr./N° de cde. 29052

29052 / A16-319K**Air Body Saw Kit****TECHNICAL DATA**

Cutting Capacity-Thickness(Gauge)	: Steel 2.91 mm (9)
	: Alum. 3.26 mm(8)
Operating Air Pressure (Maximum)	: 6.3 Kg/Cm ² (90PSI)
Strokes Per Minute @90psi	: 10,000
Stroke Length	: 10 mm
Avg. Air Consumption	: 6 CFM
Air Inlet (NPTF)	: 1/4"
Min. Hose Size	: 3/8" I.D.
Net Weight	: 0.53 kg (1.2lb)
Overall Length	: 263 mm (10-3/8")
Sound Pressure	: < 85 dBA
Vibration	: < 9 m/s ²
Standard Accessories Include	: 1 pc of 3mm Hex Wrench
	: 1 each of 18T,24T &32T Saw Blade

PARTS LIST

Index	Part #	Description
1.	314403	Cylinder Head Ass'y
2.	OR0812	O-Ring (4)
3.	RP2006	Front Dowel Pin (2)
4.	314408	Bumper
5.	315402	Piston Ass'y
6.	314405	Gasket
7.	314401	Cylinder
8.	RP2020	Rear Dowel Pin (2)
9.	314302	Automatic Valve
10.	314311	Valve Chest
11.	314303	Valve Seat
12.	315304	Valve Cap
13.	318203	Rubber Washer
14.	318704	Muffler Cap
15.	301709	Muffler
16.	318211	Adaptor

Index	Part#	Description
17.	EC1317	Retaining Ring
18.	315409	Main Liner
19.	318607	Shock Absorbent Spring
20.	315407M	Blade Holder Ass'y
21.	318102	Sliding Liner
22.	319202	Connecting Hose
23.	319608	Spring
24.	319203	Lid-Valve
25.	319204	Valve Case
26.	040712	Screw (6)
27.	OR0507	O-Ring
28.	314602	Valve Stem
29.	OR0307	O-Ring
30.	318603	Spring
31.	182808	Plug Screw
32.	319702	Air Inlet

Index	Part#	Description
33.	319703R	Right Outer Housing
34.	319703L	Left Outer Housing
35.	315601	Safety Lever Ass'y
36.	RP3022	Rear Dowel Pin
37.	318705	Lock Nut-Front
38.	318707	Lock Nut-Rear
39.	318706	Saw Blade Guide
40.	NN0407	Nut (4)
41.	040705	Screw (2)
42.	061008	Set Screw
43.	314918Z	18T Saw Blade
	314924Z	24T Saw Blade
	314932Z	32T Saw Blade
44.	314933	3mm Hex Wrench
45.	922A18	1/4"NPT Air Inlet Joint (opt.)