



Spareparts

CM 240/10/5 W **CE**

Bestelnr./N° de cde. 25150

CM 240/10/10/WF **CE**

Bestelnr./N° de cde. 20252

CM 240/10/30 W **CE**

Bestelnr./N° de cde. 20260

COMPAC PRO 350 **CE**

Bestelnr./N° de cde. 20430

CM 350/10/24 WF **CE**

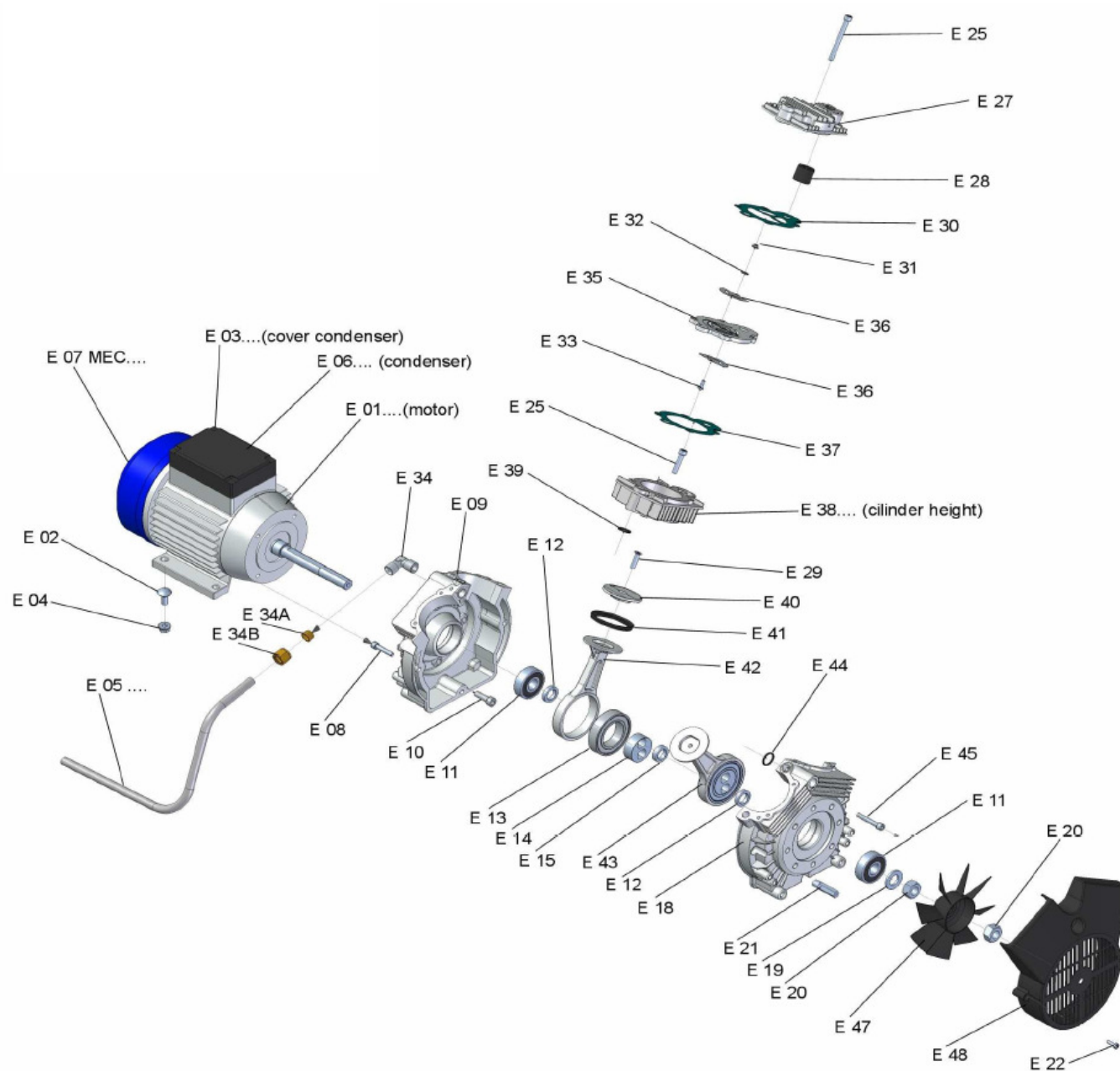
Bestelnr./N° de cde. 25190

CM 480/10/11+11 WF **CE**

Bestelnr./N° de cde. 20410

CM 380/10/7 ROBIN **CE**

Bestelnr./N° de cde. 25180



CODE	DESCRIPTION	CODE	DESCRIPTION	CODE	DESCRIPTION
E01 1,0/230-50	Electric motor 1,0 Hp 230 Volt 50 Hz 1400 rpm	F06 16	Condenser 16µF	E29	Screw for piston top
E01 1,0/230-60	Electric motor 1,0 Hp 230 Volt 60 Hz 1700 rpm	F06 25	Condenser 25µF	E30	Top gasket
E01 1,5/230-50	Electric motor 1,5 Hp 230 Volt 50 Hz 1400 rpm	F06 36	Condenser 36µF	E31	Nut for valve plate
E01 1,5/230-60	Electric motor 1,5 Hp 230 Volt 60 Hz 1700 rpm	F06 40	Condenser 40µF	E32	Washer for valve plate
E01 1,5/110-50	Electric motor 1,5 Hp 110 Volt 50 Hz 1400 rpm	F06 60	Condenser 60µF	E33	Screw for valve plate
E01 1,5/110-60	Electric motor 1,5 Hp 110 Volt 60 Hz 1700 rpm	F06 70	Condenser 70µF	E34	Air exit connector L
E01 1,5/230-60 UL	Electric motor 1,5 Hp 230 Volt 60 Hz 1700 rpm	F06 80	Condenser 80µF	E34 A	Ogive for aluminum tube
E01 2,0/230-50	Electric motor 2,0 Hp 230 Volt 50 Hz 2800 rpm	F07 MEC 80	Cover fan for electric engine MEC 80	E34 B	Nut for tube diam. 12 mm aluminum
E01 2,0/230-60	Electric motor 2,0 Hp 230 Volt 60 Hz 3400 rpm	F07 MEC 90	Cover fan for electric engine MEC 90	E35	Valve plate
E02	Screw for electric engine	F08	Screw for fixing monobloc	E35*	Valve plate complete
E03 S	Plastic cover for electric engine small	F09 + E18	Compressor Monobloc + E18	E36	Lamella
E03 B	Plastic cover for electric engine Big	F10	Screw for fixing compressor monobloc	E37	Cylinder gasket 0,8 mm
E04	Nut for fixing electric engine	F11	Bearing for compressor monobloc	E37 0.3	Cylinder gasket 0,3 mm
E05 3T	Aluminum tube tank 3T model 1-1,5 cv	F12	Thickness bearing short 5,5 mm	E37 0.5	Cylinder gasket 0,5 mm
E05 3T 2CV	Aluminum tube tank 3T model 2 cv	F13	Bearing for connecting rod	E38 A	Cylinder Chrome HIGH 35,5mm diam. 60mm
E05 3-30L	Aluminum tube tank 3-30 Liter model 1-1,5 cv	F14	Eccentric	E38 B	Cylinder Chrome Short 31,5mm diam. 60mm
E05 3-30L 2CV	Aluminum tube tank 3-30 Liter model 2 cv	F15	Thickness bearing high 7,0 mm	E39	Cylinder O-ring
E05 3-50L	Aluminum tube tank 3-50 Liter model 1-1,5 cv	F18 + E09	Compressor Monobloc + E09	E40	Piston top diam. 60mm
E05 3-50L 2CV	Aluminum tube tank 3-50 Liter model 2 cv	F19	Washer	E41	Piston seal diam. 60mm
E05 1-10C	Aluminum tube tank 1-10 Liter model 1-1,5 cv	F20	Nut M16	E42	Connecting rod diam. 60mm
E05 1-10C 2CV	Aluminum tube tank 1-10 Liter model 2 cv	F21	Stud bolt	E43	Connecting rod Complete diam. 60mm
E05 1-25C	Aluminum tube tank 1-25 Liter model 1-1,5 cv	F22	Screw for cover fan	E44	O-ring for compressor monobloc
E05 1-25C 2CV	Aluminum tube tank 1-25 Liter model 2 cv	F25	Screw for fixing head	E45	Screw for fixing compressor monobloc
E05 SIL50	Flexible tube for extreme silenced 1-1,5-2 cv	F27	Head	E47	Plastic fan
E05 DENT.	Flexible tube for extreme dental 1-1,5-2 cv	F28	Top filter	E48	Cover fan