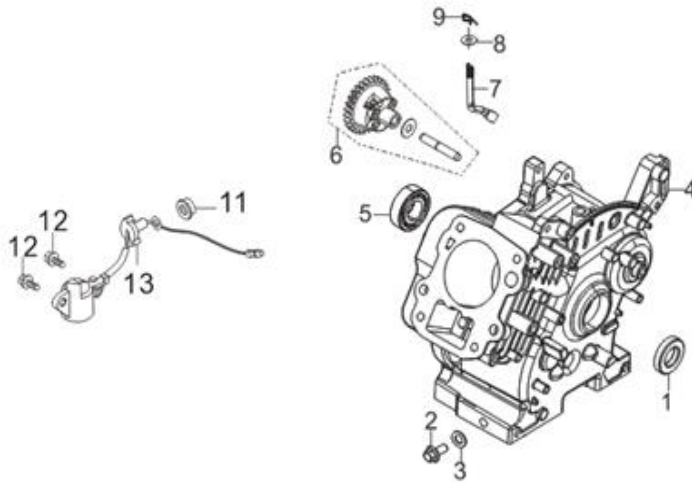


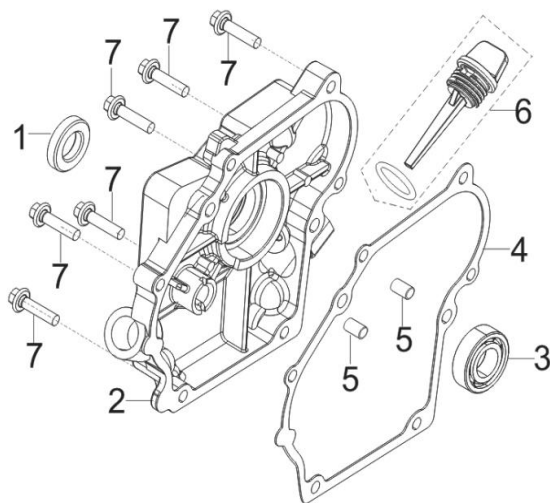
# 7180

**FIG.1 CRANKCASE ASSY. (E01)**



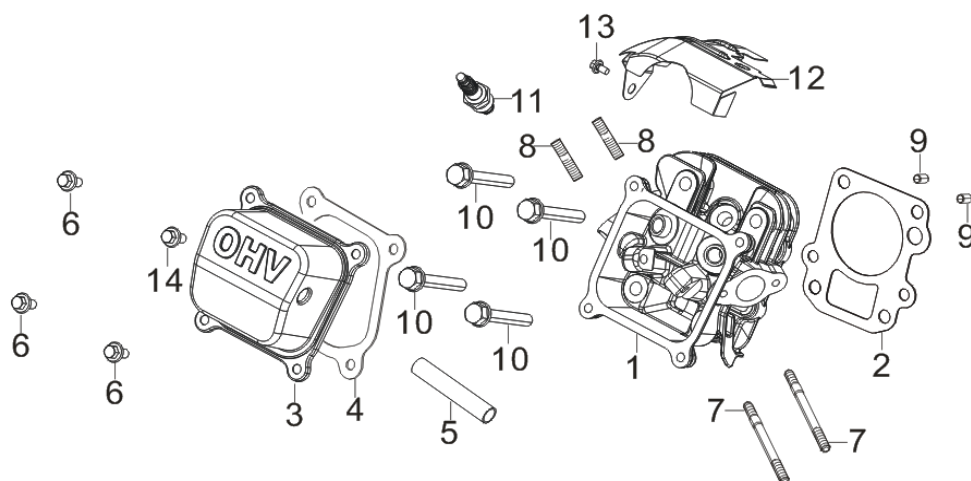
REF.NO.	PART NO	DESCRIPTION	Q'TY
E01-1	90682-Z510110-00A0	SEAL, OIL	1
E01-2	11007-Z010110-00A0	BOLT, DRAIN PLUG	1
E01-3	90408-Z010110-00A0	FLAT WASHER	1
E01-4	11310-Z210711-0BA0	CRANKCASE SUBASSEMBLY.	1
E01-5	90548-0203-CLA0	DEEP GROOVE BALL BEARING	1
E01-6	16400-Z210110-00A0	GEAR ASSY, GOVERNOR	1
E01-7	16061-Z510210-00A0	ARM, GOVERNOR	1
E01-8	90408-Z010210-00A0	FLAT WASHER	1
E01-9	90501-Z010110-00A0	COTTER PIN	1
E01-11	90305-Z010210-01A0	HEXAGON NUT WITH FLANGE	1
E01-12	90001-0614-01A0	BOLT	2
E01-13	37060-Z510140-00A0	SENSOR, ENGINE OIL	1

**FIG.2 COVER SUBASSEMBLY, CRANKCASE(E02)**



REF.NO.	PART NO	DESCRIPTION	Q'TY
E02-1	90682-Z510110-00A0	SEAL, OIL	1
E02-2	11411-Z510311-0BA0	COVER, CRANKCASE	1
E02-3	90548-0303-CLA0	DEEP GROOVE BALL BEARING	1
E02-4	11001-Z510130-00A0	GASKET, CRANKCASE	1
E02-5	90502-0812-00A0	POSITION PIN - TYPE A	2
E02-6	15010-Z510140-Q5A0	DIPSTICK SUBASSEMBLY, OIL	1
E02-7	90001-0625-01A0	HEXAGON SOCKET FLANGE FACE BOLT - SMALL SERIES	6

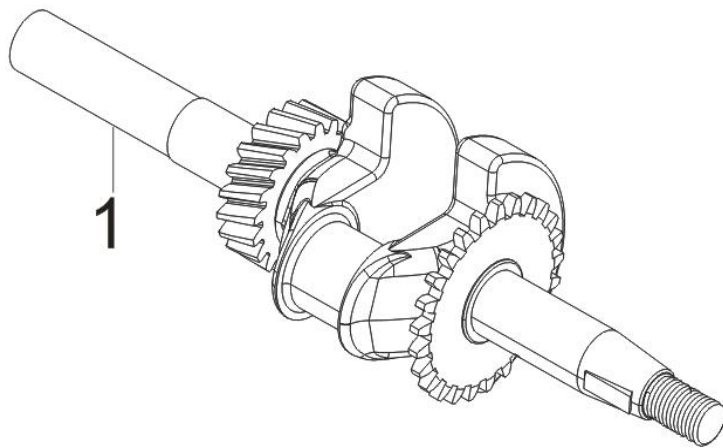
**FIG.3 CYLINDER HEAD / PLUG,SPARK (E03)**



REF.NO.	PART NO	DESCRIPTION	Q'TY
E03-1	12140-Z0M0110-0BA0	HEAD SUBASSEMBLY, CYLINDER	1
E03-2	12131-Z210110-00A0	GASKET, CYLINDER HEAD	1
E03-3	12410-Z0M0110-00A0	COVER SUBASSEMBLY, CYLINDER HEAD	1
E03-4	12004-Z0M0110-00A0	CYLINDER HEAD COVER GASKET	1
E03-5	17004-Z0M0310-00A0	TUBE, BREATHER	1
E03-6	90001-0612-01A0	HEXAGON SOCKET FLANGE FACE BOLT - SMALL SERIES	3

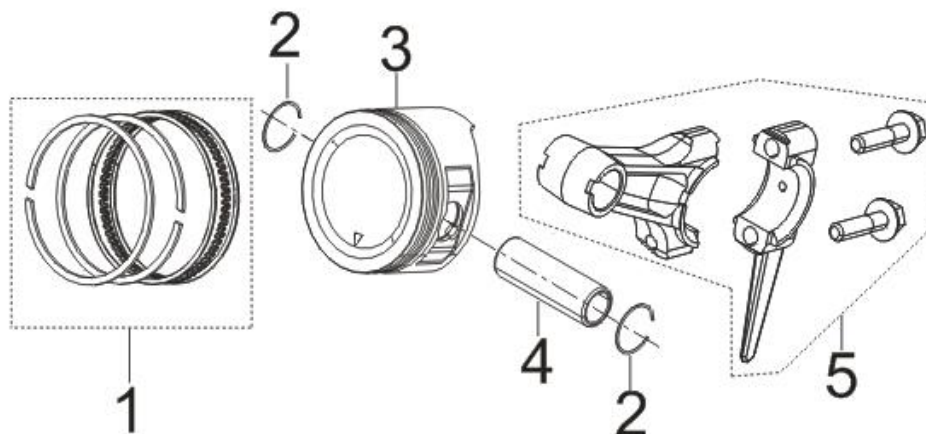
E03-7	90204-Z010210-00A0	STUD BOLT	2
E03-8	90203-Z010110-00A0	STUD BOLT	2
E03-9	90502-0814-00A0	POSITION PIN - TYPE A	2
E03-10	12003-Z510110-00A0	CYLINDER HEAD BOLT	4
E03-11	30010-Z350210-00A0	PLUG, SPARK	1
E03-12	19304-Z510310-00A0	SHROUD, CYLINDER BODY	1
E03-13	90001-0610-01A0	HEXAGON SOCKET FLANGE FACE BOLT - SMALL SERIES	1
E03-14	90001-0614-01A0	HEXAGON SOCKET FLANGE FACE BOLT - SMALL SERIES	1

**FIG.4 ROD,CRANKSHAFT CONNETING (E04)**



REF.NO.	PART NO	DESCRIPTION	Q'TY
E04-1	13300-Z210210-00A1	CRANKSHAFT ASSY.	1

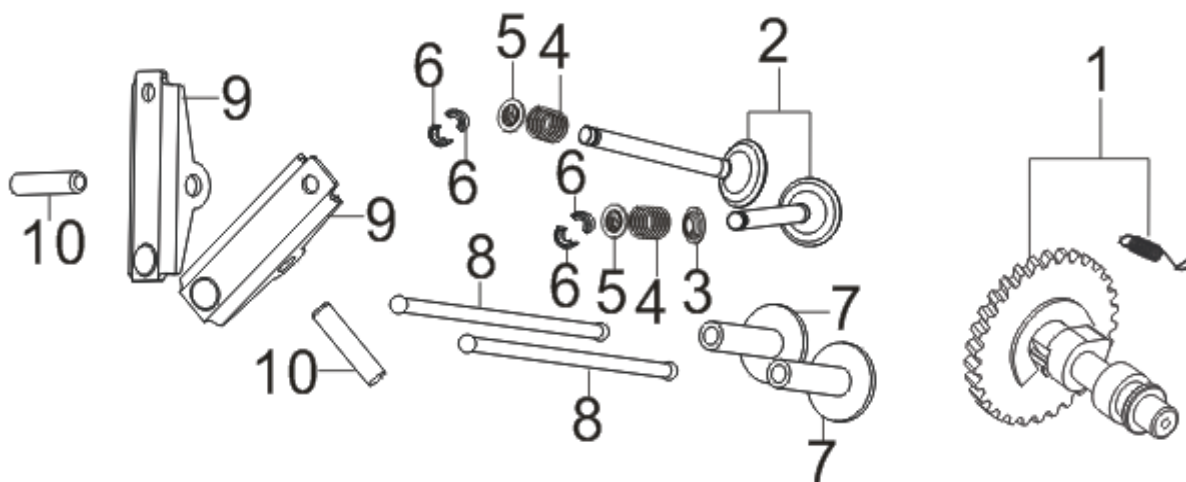
**FIG.5 RING SET,OIL / ROD,CRANKSHAFT CONNETING (E05)**



REF.NO.	PART NO	DESCRIPTION	Q'TY
E05-1	13200-Z450210-00A0	RING ASSY, PISTON	1
E05-2	13122-Z450110-00A0	CLIP, PISTON PIN	2

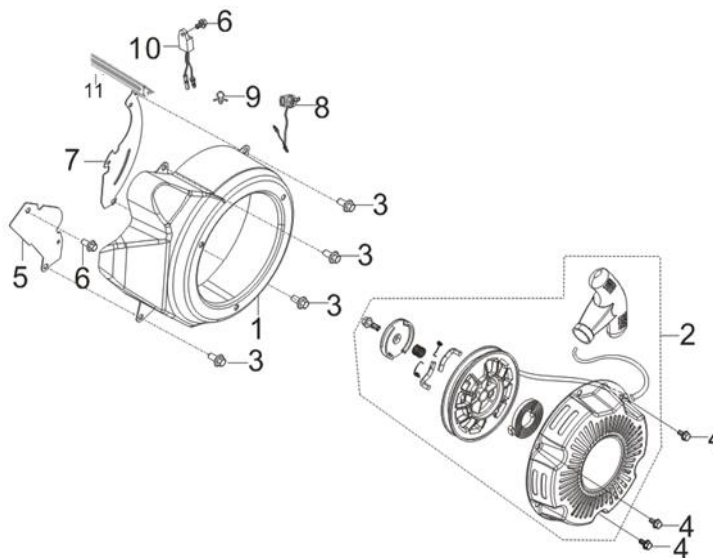
E05-3	13111-Z0M0110-00A0	PISTON	1
E05-4	13121-Z450110-00A0	PIN, PISTON	1
E05-5	13010-Z210110-00A0	ROD, CONNECTING	1

**FIG.6 TRAIN,VALVE / CAMSHAFT SUBASSEMBLY (E06)**



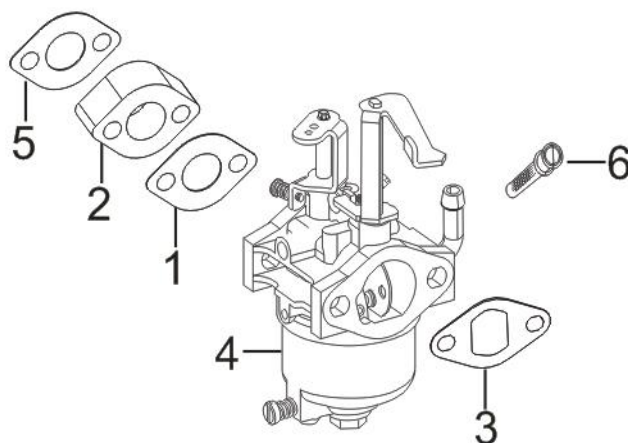
REF.NO.	PART NO	DESCRIPTION	Q'TY
E06-1	14200-Z0M0110-00A0	CAMSHAFT ASSY.	1
E06-2	12110-Z0M0110-00A0	VALVES SET	1
E06-3	12101-Z810210-00A0	GUIDE, SEAL	1
E06-4	12103-Z510110-00A0	SPRING, VALVE	2
E06-5	12112-Z810210-00A0	SEAT, VALVE SPRING	2
E06-6	12109-Z810110-00A0	CLAMP, VALVE LOCK	4
E06-7	14081-Z010110-00A0	TAPPET, VALVE	2
E06-8	14071-Z0M0110-00A0	LIFTER, VALVE	2
E06-9	14310-Z0M0110-00A0	ROCKER SUBASSEMBLY, VALVE	2
E06-10	14318-Z950110-00A0	SHAFT, VALVE ROCKER	2

**FIG.7 STARTER,RECOIL (E07)**



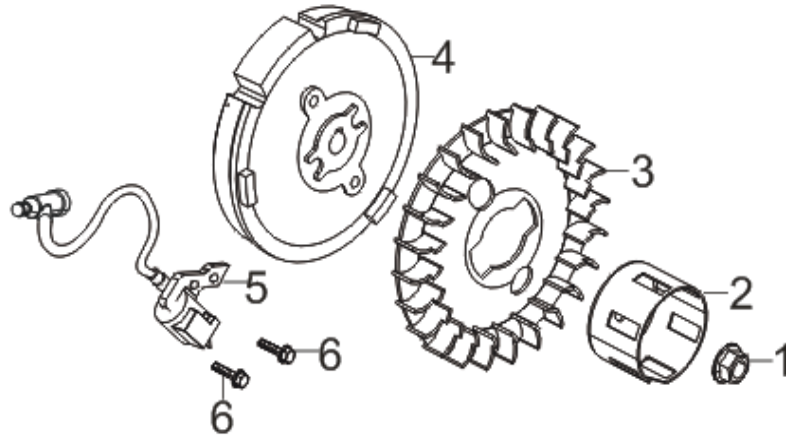
REF.NO.	PART NO	DESCRIPTION	Q'TY
E07-1	28110-Z510110-H700	SHROUD	1
E07-2	28200-Z510210-H700	STARTER ASSY, RECOIL	1
E07-3	90001-0612-01A0	BOLT	4
E07-4	90001-0608-01A0	BOLT	3
E07-5	19306-Z510110-00A0	DEFLECTOR, CRANKCASE AIR	1
E07-6	90001-0610-01A0	BOLT	2
E07-7	30028-Z510110-00A0	SHIELD, SHROUD	1
E07-8	35540-Z060140-Q2A0	SWITCH SUBASSEMBLY, STOP ENGINE	1
E07-9	90684-Z080110-00A0	WIRE CLIP	1
E07-10	37050-Z010210-00A0	PROTECTOR, OIL	1
E07-11	90684-Z010310-00A0	WIRE CLIP	1

**FIG.8 CARBURETOR ASSY. (E09)**



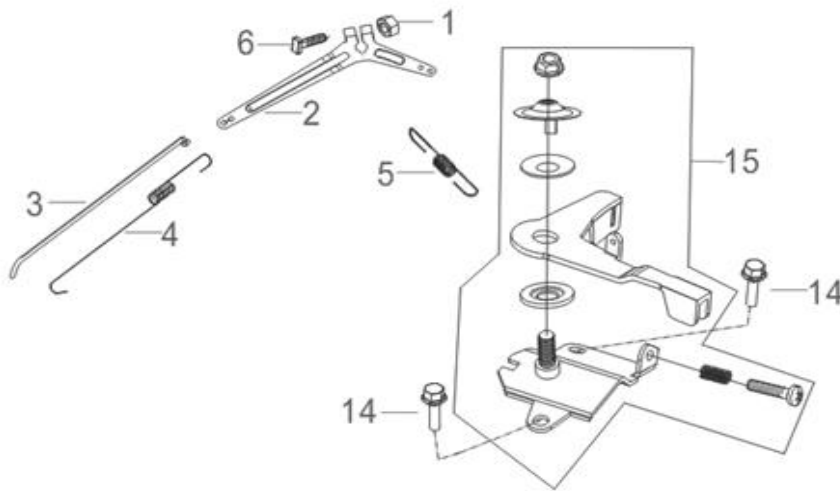
REF.NO.	PART NO	DESCRIPTION	Q'TY
E09-1	16001-Z510110-00A0	CARBURETOR SEAL GASKET	1
E09-2	16003-Z510210-00A0	PLATE, CARBURETOR INSULATOR	1
E09-3	17001-Z510110-00A0	AIR CLEANER SEAL GASKET	1
E09-4	16100-Z0M0110-00A9	CARBURETOR ASSY.	1
E09-5	17002-Z510110-00A0	GASKET, INLET	1
E09-6	16652-Z800110-00A0	STRAINER, FUEL	1

**FIG.9 FLYWHEEL / IMPELLER / STARTER PULLEY / IGNITION COIL (E10)**



REF.NO.	PART NO	DESCRIPTION	Q'TY
E10-1	13501-Z510110-00A0	NUT, FLYWHEEL	1
E10-2	28002-Z510110-00A1	PULLEY,STARTER	1
E10-3	19352-Z510110-00A1	IMPELLER	1
E10-4	13510-Z510110-00A0	FLYWHEEL SUBASSEMBLY	1
E10-5	30400-Z0M0211-00B1	COIL, IGNITION	1
E10-6	90001-0620-01A0	HEXAGON SOCKET FLANGE FACE BOLT - SMALL SERIES	2

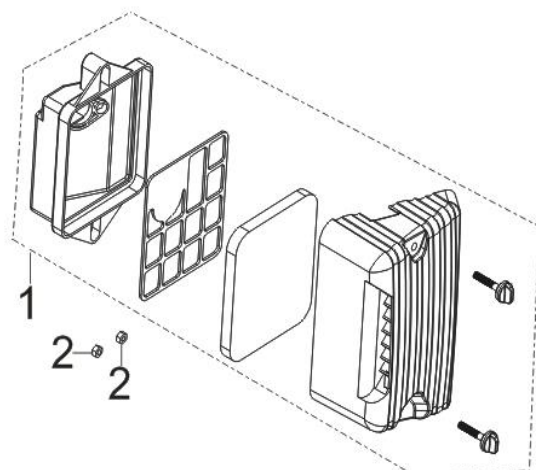
**FIG.10 CONTROL ASSY, THROTTLE (E11)**



REF.NO.	PART NO	DESCRIPTION	Q'TY
E11-1	90305-0600-31A0	HEXAGON NUT WITH FLANGE	1
E11-2	16070-Z510210-00A0	GOVERNOR BRACKET SUBASSEMBLY	1
E11-3	16062-Z0M0110-00A0	ROD, GOVERNEOR	1
E11-4	16012-Z510110-00A0	SPRING, THROTTLE VALVE RETURNING	1
E11-5	16063-Z0M0110-00A0	SPRING, GOVERNOR	1
E11-6	16072-Z010110-00A0	BOLT, GOVERNOR SUPPORT	1
E11-14	90001-0608-01A0	HEXAGON SOCKET FLANGE FACE BOLT - SMALL SERIES	2

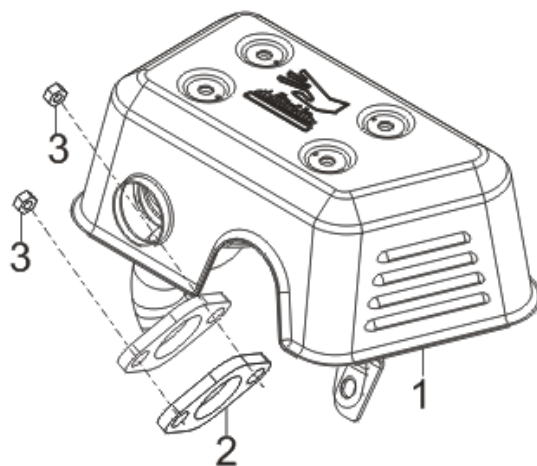
E11-15	16520-Z510120-00A0	CONTROL ASSY, THROTTLE	1
--------	--------------------	------------------------	---

**FIG.11 CLEANER, AIR (F01)**



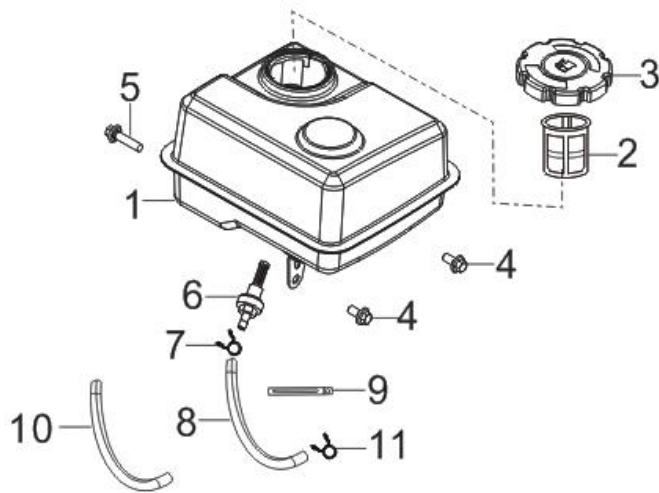
REF.NO.	PART NO	DESCRIPTION	Q'TY
F01-1	17100-Z510510-00A0	AIR CLEANER	1
F01-2	90305-0600-31A0	NUT	2

**FIG.12 MUFFLER ASSY. (F02)**



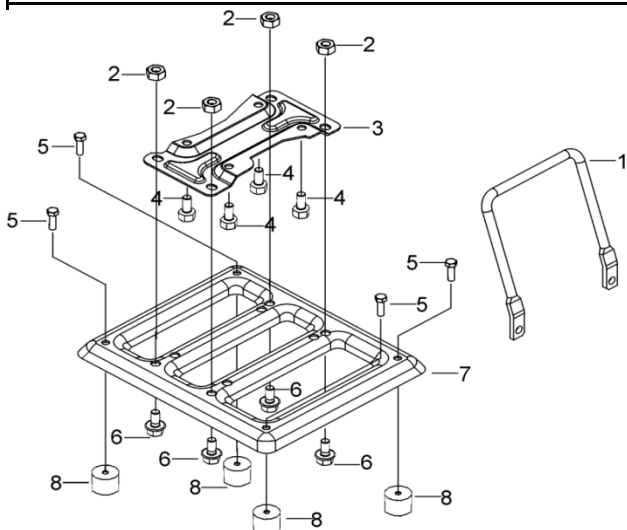
REF.NO.	PART NO	DESCRIPTION	Q'TY
F02-1	18100-Z0M0110-00A0	MUFFLER ASSY.	1
F02-2	18001-Z510110-00A0	GASKET, EXHAUST OUTLET	1
F02-3	90303-0800-31A0	TYPE 1 HEXAGON NUT	2

**FIG.13 TANK ASSY, FUEL (F03)**



REF.NO.	PART NO	DESCRIPTION	Q'TY
F03-1	16620-Z510611-H7A0	FUEL TANK	1
F03-2	16652-Z0M0110-00A0	STRAINER, FUEL	1
F03-3	16730-Z440410-0000	COVER, FUEL TANK	1
F03-4	90001-0612-01A0	HEXAGON SOCKET FLANGE FACE BOLT - SMALL SERIES	2
F03-5	90001-0612-01A0	HEXAGON SOCKET FLANGE FACE BOLT - SMALL SERIES	1
F03-6	16680-Z010110-00A0	OUTLET SUBASSEMBLY, FUEL TANK OIL	1
F03-7	90740-Z010510-00A0	COLLAR	1
F03-8	90686-Z511410-00M1	TUBE, FUEL	1
F03-9	90684-Z030120-00A0	WIRE CLIP	1
F03-10	30431-Z010110-00A0	JACKET, RUBBER	1
F03-11	90740-Z010610-00A0	COLLAR	1

**FIG.14 FRAME ASSY, ENGINE (F04)**

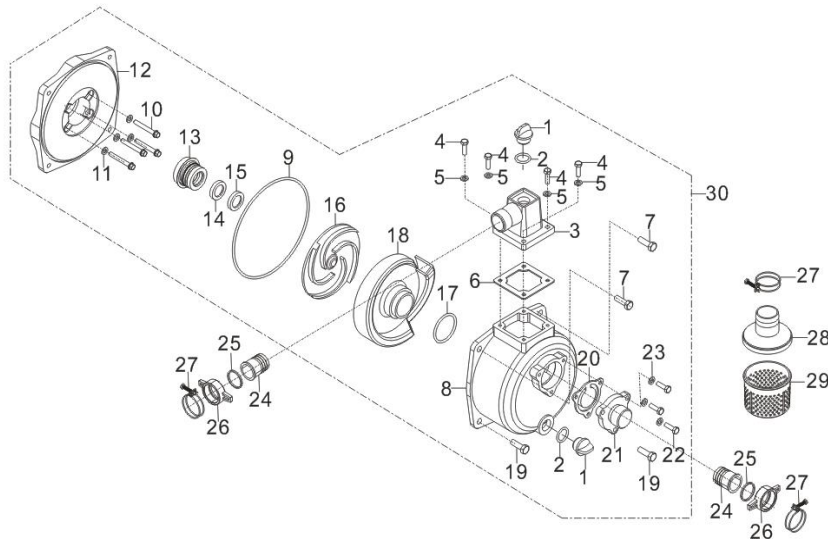


REF.NO.	PART NO	DESCRIPTION	Q'TY
F04-1	54111-V040220-00A0	TUBE, HANDLE	1
F04-2	90327-0800-31A0	TYPE 1 HEXAGON NUT	4
F04-3	51002-Z450110-00A0	ENGINE FIXED BOTTOM PLATE	1



F04-4	90001-0816-01A0	HEXAGON SOCKET FLANGE FACE BOLT - SMALL SERIES	4
F04-5	90001-0610-01A0	HEXAGON SOCKET FLANGE FACE BOLT - SMALL SERIES	4
F04-6	90001-0820-01A0	HEXAGON SOCKET FLANGE FACE BOLT - SMALL SERIES	4
F04-7	51143-V040110-H7A0	PLATE, BOTTOM	1
F04-8	51014HY450110-00A0	SEAT, ENGINE FRAME SHOCK ABSORPTION	4

**FIG.15 (F61)**



REF.NO.	PART NO	DESCRIPTION	Q'TY
F61-1	70107-V040410-00A0	PLUG, THREAD	2
F61-2	70122-V040610-00A0	WASHER, SCREW PLUG	2
F61-3	70108-V040610-0PA0	OUTLET, WATER	1
F61-4	90005-0620-01A0	BOLT	4
F61-5	90409-V040110-00A0	SEAL WASHER	4
F61-6	70109-V040610-00A0	GASKET, OUTLET	1
F61-7	90001-0830-01A0	HEXAGON SOCKET FLANGE FACE BOLT - SMALL SERIES	2
F61-8	70105-V040410-0PA0	PUMP BODY	1
F61-9	70119-V040610-00A0	CUSHION, WATER PUMP JOINT	1
F61-10	90001-0645-01A0	BOLT	4
F61-11	90409-V040110-00A0	SEAL WASHER	4
F61-12	70118-V040410-0PA0	JOINT, WATER PUMP	1
F61-13	70300-V040610-00A0	SEAL ASSY, MECHANISM	1
F61-14	70309-V040410-00A0	SEAL, PORCELAIN	1
F61-15	70125-V040610-00A0	RING, IMPELLER SEAL	1
F61-16	70102-V040410-00A0	IMPELLER, WATER PUMP	1
F61-17	70104-V040610-00A0	RIGN, WHORL CASE SEALING	1
F61-18	70103-V040410-00A0	CASE, WHORL	1
F61-19	90001-0825-01A0	HEXAGON SOCKET FLANGE FACE BOLT - SMALL SERIES	2
F61-20	70115-V040610-00A0	GASKET, INLET WATER	1

F61-21	70116-V040610-0PA0	INLET, WATER	1
F61-22	90005-0620-01A0	HEXAGON SOCKET FLANGE FACE BOLT - SMALL SERIES	3
F61-23	90409-V040110-00A0	SEAL WASHER	3
F61-24	70112-V040510-0PA0	INTERFACE, HOSE	2
F61-25	70131-V040510-00A0	RING, HOSE JOINT SEAL	2
F61-26	70111-V040710-0PA0	JOINT, HOSE	2
F61-27	70400-V040410-00A0	HOOP SUBASSEMBLY, HOSE	3
F61-28	70113-V040310-00A0	COVER, FILTER	1
F61-29	70114-V040410-00A0	FILTER	1
F61-30	70100-V041310-0PA0	PUMP ASSY, WATER	1