

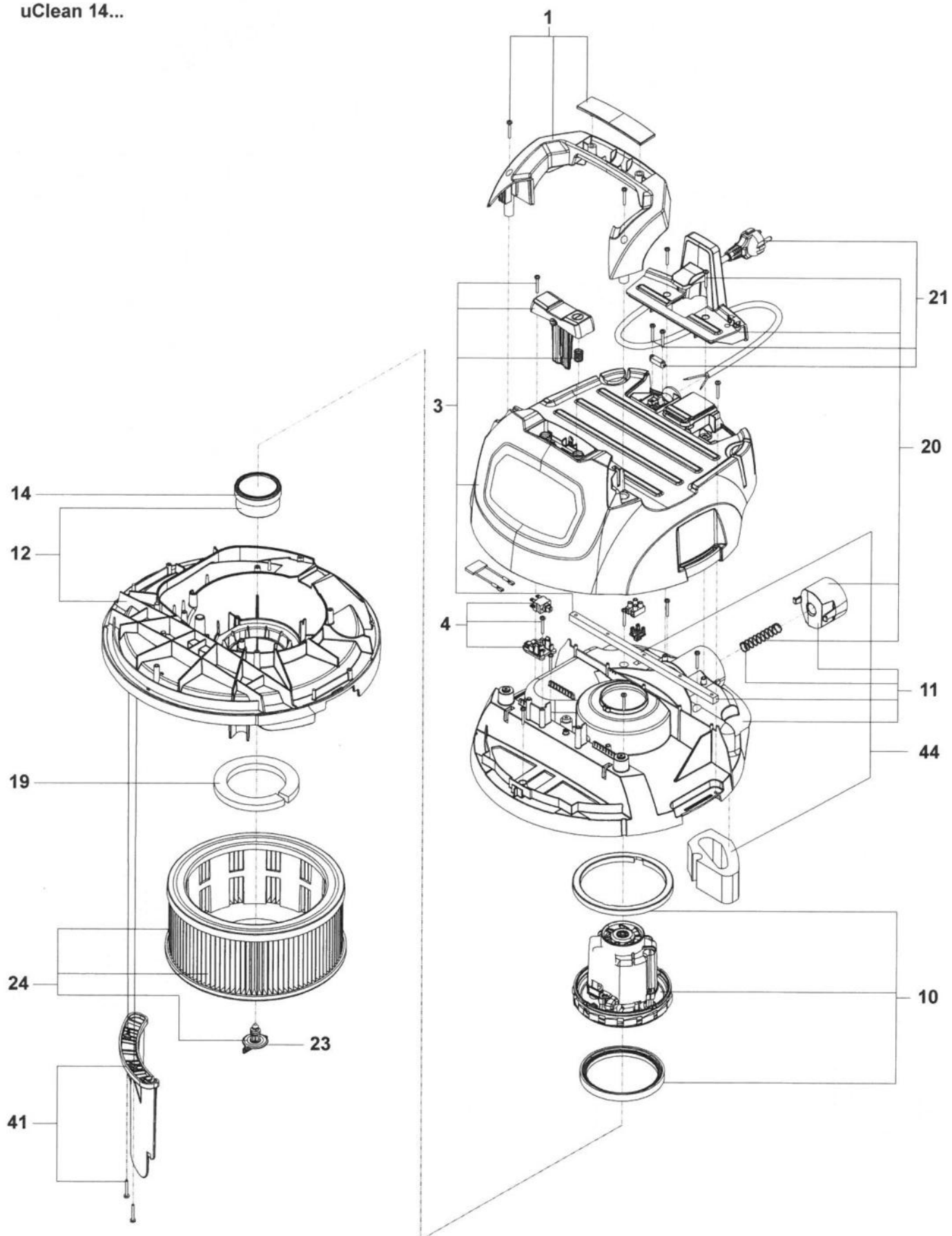
Stand/issue: 22-01

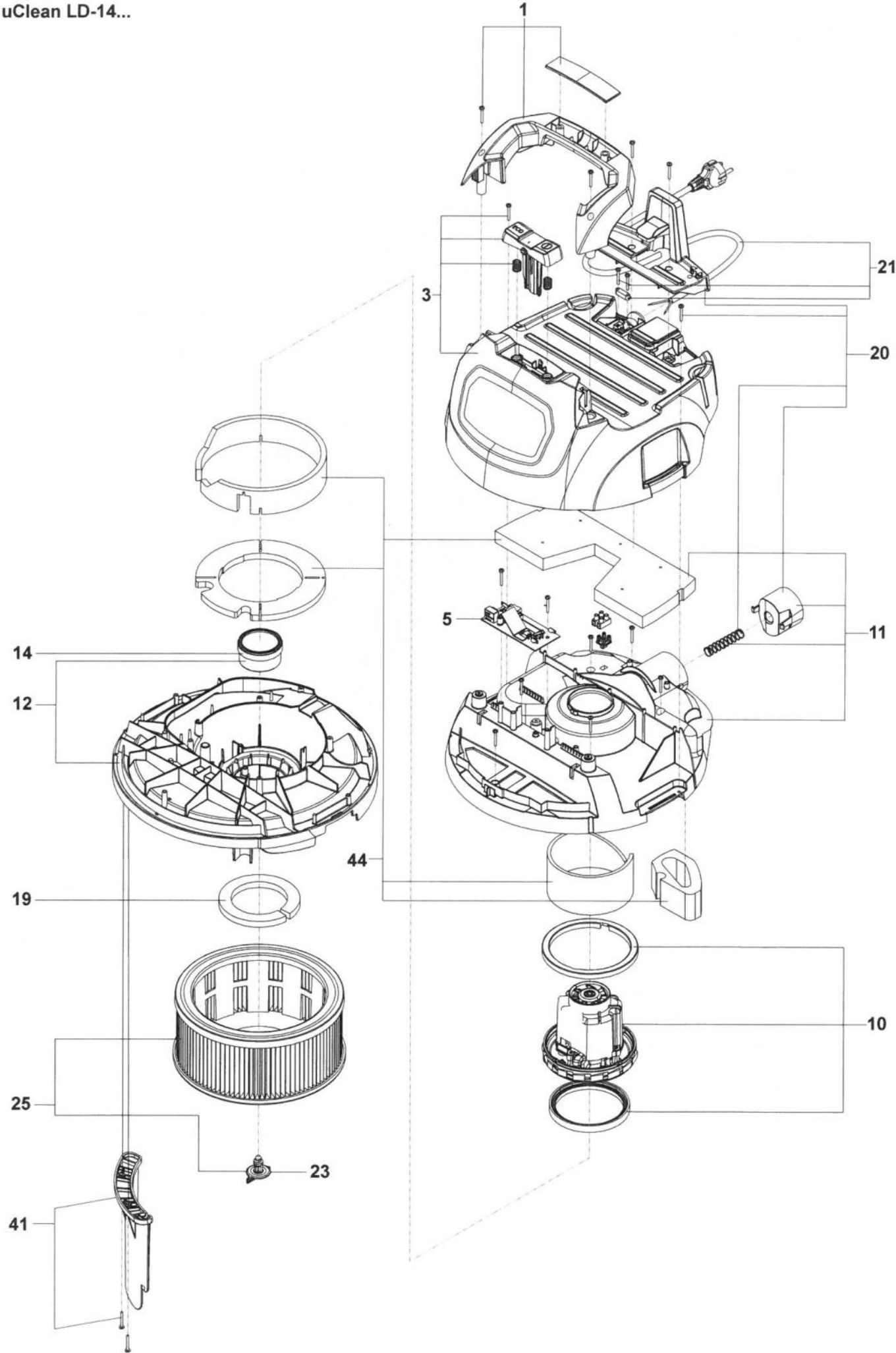
A - uClean ARDL 14 ..
B - uClean ADL 14 ..
C - uClean LD 14 ..
D - uClean 14 ..

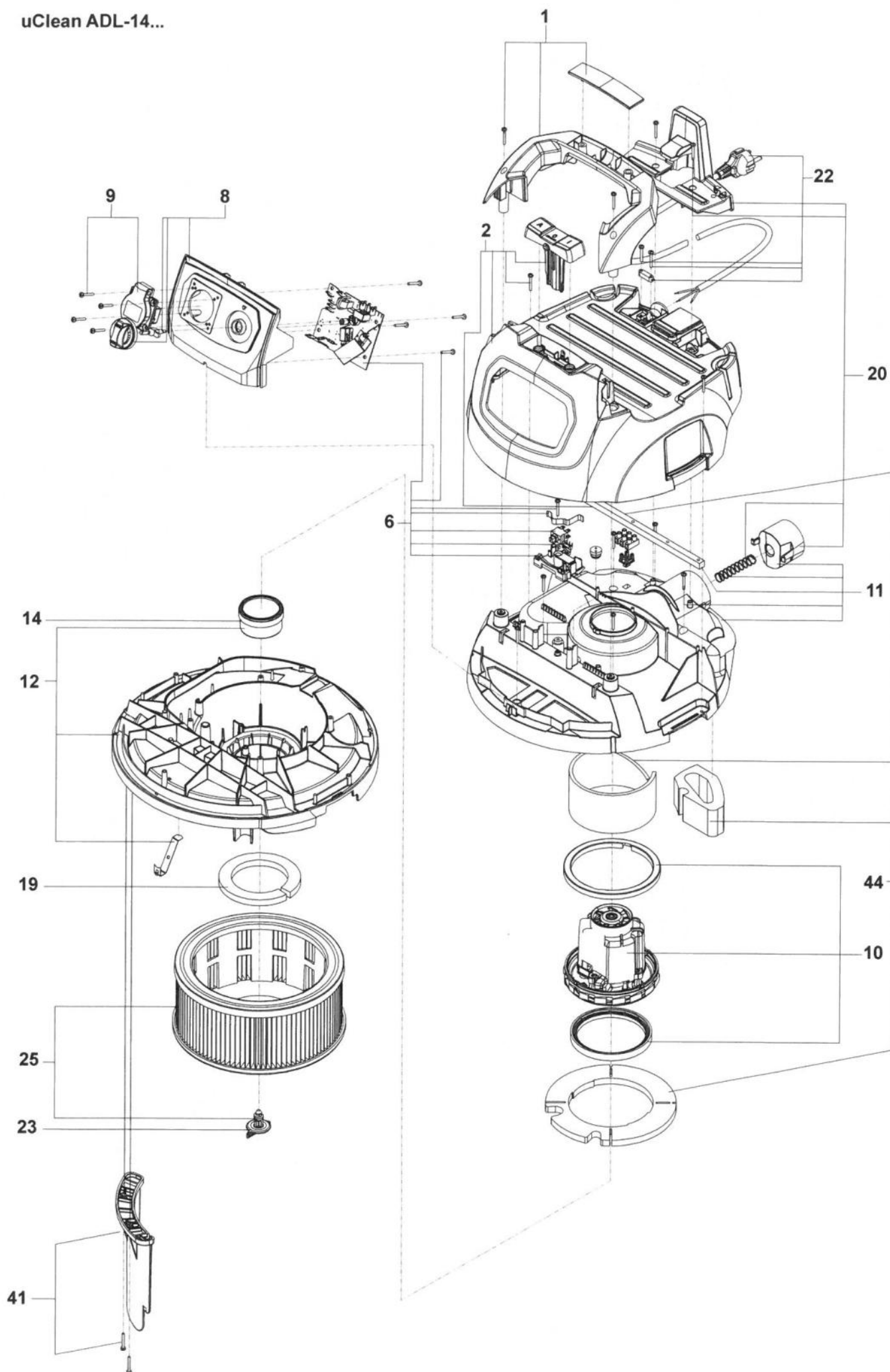
| Pos.-Nr. Item-No. | Benennung Name | | Bestell-Nr. Order-No. | Typ Typ | PG PG |
|----------------------|------------------------------------|---------------------------------------|--------------------------|------------|----------|
| 1 | Set Griff | Set grip | 441023 | A - D | 16 |
| 2 | Set Haube offen | Set hood open | 441030 | A - B | 27 |
| 3 | Set Haube geschlossen | Set hood closed | 441047 | C - D | 27 |
| 4 | Set Schalter | Set switch | 441054 | D | 12 |
| 5 | Set Elektronik LD | Set electronic LD | 441061 | C | 23 |
| 6 | Set Elektronik ADL | Set electronic ADL | 441078 | B | 27 |
| 7 | Set Elektronik ARDL | Set electronic ARDL | 441085 | A | 28 |
| 8 | Set Frontplatte | Set front plate | 441092 | A - B | 16 |
| 9 | Set Steckdose | Set socket | 441108 | A - B | 12 |
| 10 | Set Motorgebläse | Set motor blower | 441115 | A - D | 40 |
| 11 | Set Trägerplatte | Set mounting plate | 441122 | A - D | 21 |
| 12 | Set Unterteil ohne Rüttler | Set bottom part without compactor | 441139 | B - D | 21 |
| 13 | Set Unterteil mit Rüttler | Set bottom part with compactor | 441146 | A | 21 |
| 14 | Set Schwimmer | Set float | 441153 | A - D | 11 |
| 19 | Set Motorschutzfilter | Set motor protection filter | 441177 | A - D | 10 |
| 20 | Set Ventil + Schlauchhaken | Set valve + tube hook | 441184 | A - D | 15 |
| 21 | Set Anschlussleitung 12m zweiadrig | Set connecting cable 12m two-wire | 444123 | C - D | 20 |
| 22 | Set Anschlussleitung 8m dreiadrig | Set connecting cable 8m three-wire | 444130 | A - B | 22 |
| 23 | Set Gewindekupplung | Set tread coupling | 441191 | A - D | 10 |
| 24 | Faltenfilter-Patrone FP 3600 | Folded filter cartridge FP 3600 | 411729 | D | 21 |
| 25 | Faltenfilter-Patrone FPP 3600 | Folded filter cartridge FPP 3600 | 415109 | B - C | 24 |
| 25 | Faltenfilter-Patrone FPP 3600 HEPA | Folded filter cartridge FPP 3600 HEPA | 459295 | B - C | 24 |
| 26 | Faltenfilter-Patrone FPPR 3600 | Folded filter cartridge FPPR 3600 | 413464 | A | 26 |
| 27 | Faltenfilter-Patrone FPPR 7200 | Folded filter cartridge FPPR 7200 | 413372 | A | 31 |
| 41 | Set Prallblech | Set baffle plate | 441269 | A - D | 10 |
| 44 | Set Dichtungen | Set gasket | 442914 | A - D | 16 |
| 46 | Set Rüttler | Set vibrating magnet | 441412 | A | 34 |
| 47 | Set Rüttlerbrücke | Set vibrator plate | 444024 | A | 12 |

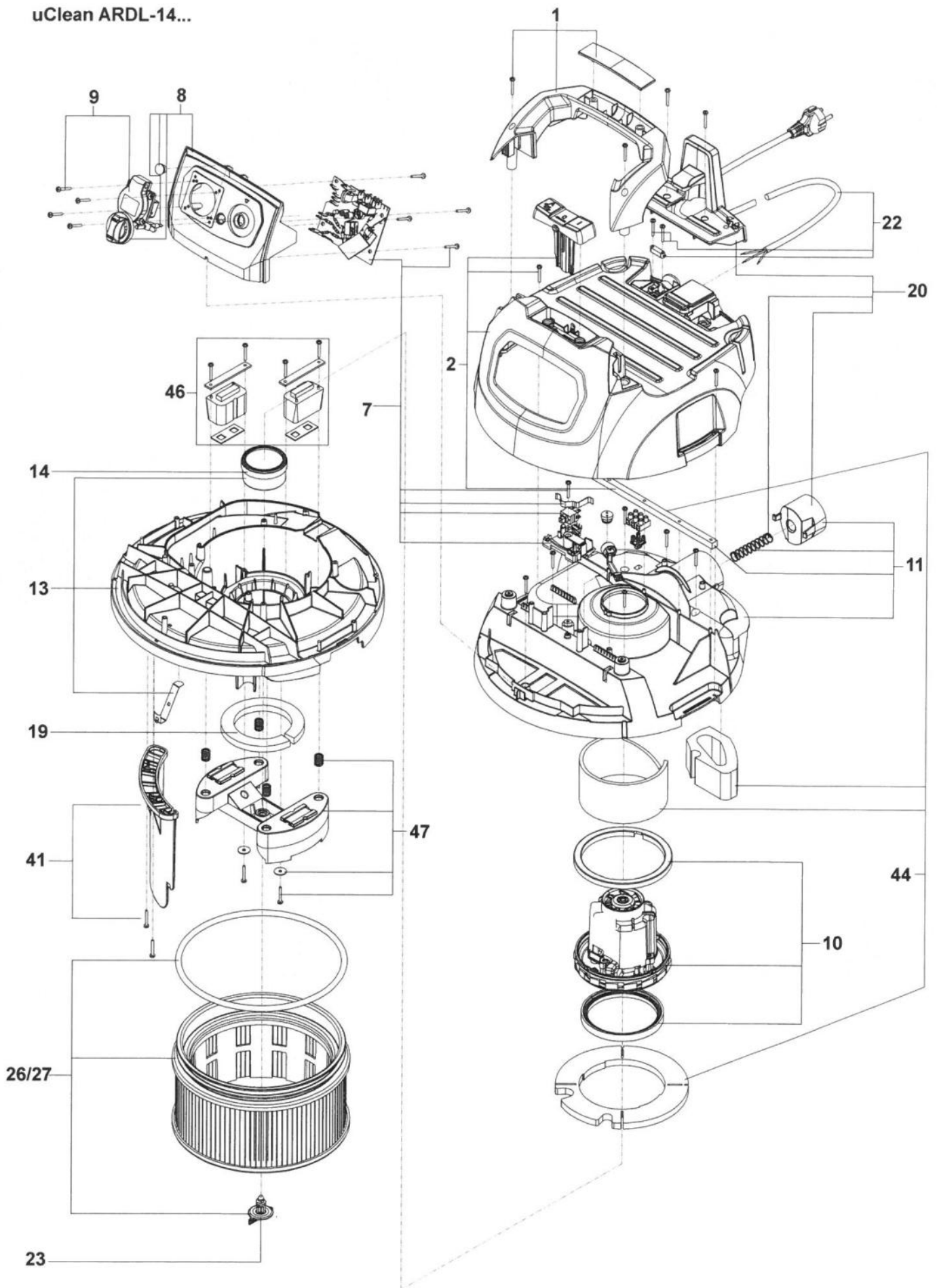
A - Behälter 20L
B - Behälter 32L
C - Behälter 35L
D - Behälter 45L
E - Behälter 22L
F - Behälter 55L
G - Behälter 30L

| Pos.-Nr. Item-No. | Benennung Name | | Bestell-Nr. Order-No. | Typ Typ | PG PG |
|----------------------|---------------------------|------------------------------|--------------------------|------------|----------|
| 15 | Set Lenkrolle 20/32l | Set castor wheel 20/32l | 440859 | A + B | 14 |
| 16 | Set Räder 20/32l | Set wheel 20/32l | 440798 | A + B | 16 |
| 17 | Set Fußbremse | Set foot brake | 441160 | A + B | 12 |
| 18 | Set Verschlüsse 20/32l | Set locking device 20/32l | 440774 | A + B | 9 |
| 28 | Set Behälter 20l | Set container 20l | 440675 | A | 35 |
| 29 | Set Behälter 32l | Set container 32l | 440712 | B | 36 |
| 30 | Set Behälter 35l | Set container 35l | 440743 | C | 53 |
| 31 | Set Behälter 45l | Set container 45l | 440750 | D | 42 |
| 32 | Rohrhalter | Tube holder | 526669 | D | 10 |
| 33 | Set Lenkrolle 45l | Set castor wheel 45l | 440897 | D | 18 |
| 34 | Set Räder 45l | Set wheel 45l | 440828 | D | 20 |
| 35 | Set Verschlüsse 45l | Set locking device 45l | 440835 | D | 10 |
| 36 | Set Behälter 55l KFG | Set container 55l KFG | 440767 | F | 64 |
| 37 | Set Behälter 22l | Set container 22l | 440705 | E | 52 |
| 38 | Set Verschlüsse 22/30/35l | Set locking device 22/30/35l | 440781 | C+E+G | 14 |
| 39 | Set Räder 22/30/35l | Set wheel 22/30/35l | 440811 | C+E+G | 17 |
| 40 | Set Lenkrolle 22/30/35l | Set castor wheel 22/30/35l | 440880 | C+E+G | 19 |
| 42 | Set Behälter 30l | Set container 30l | 441528 | G | 46 |
| 43 | Set Behälter 55l | Set container 55l | 441474 | F | 57 |
| 45 | Set Fahrbügel | Set push handle | 443386 | D | 31 |
| 48 | Set Griff | Set grip | 439358 | F | 15 |

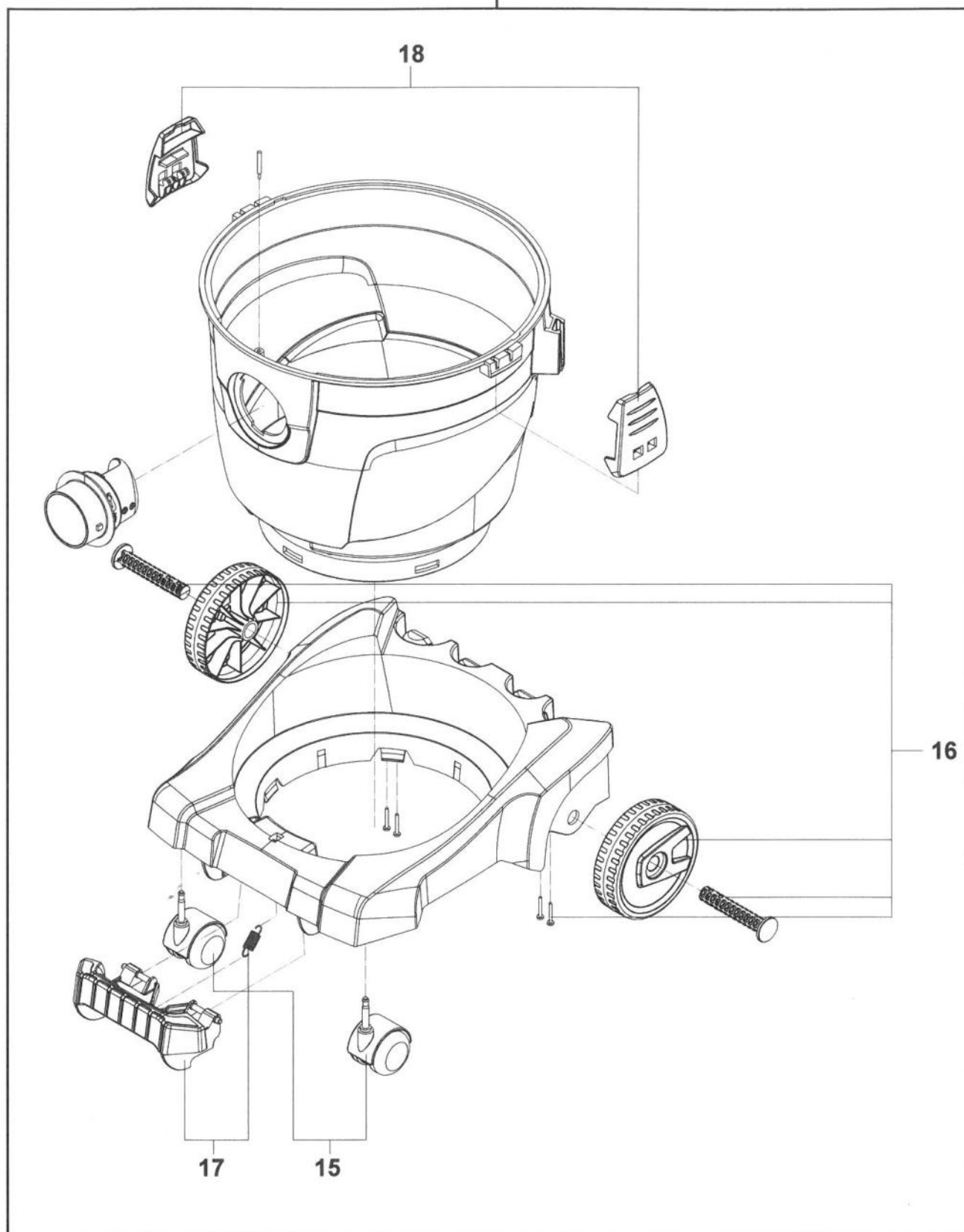




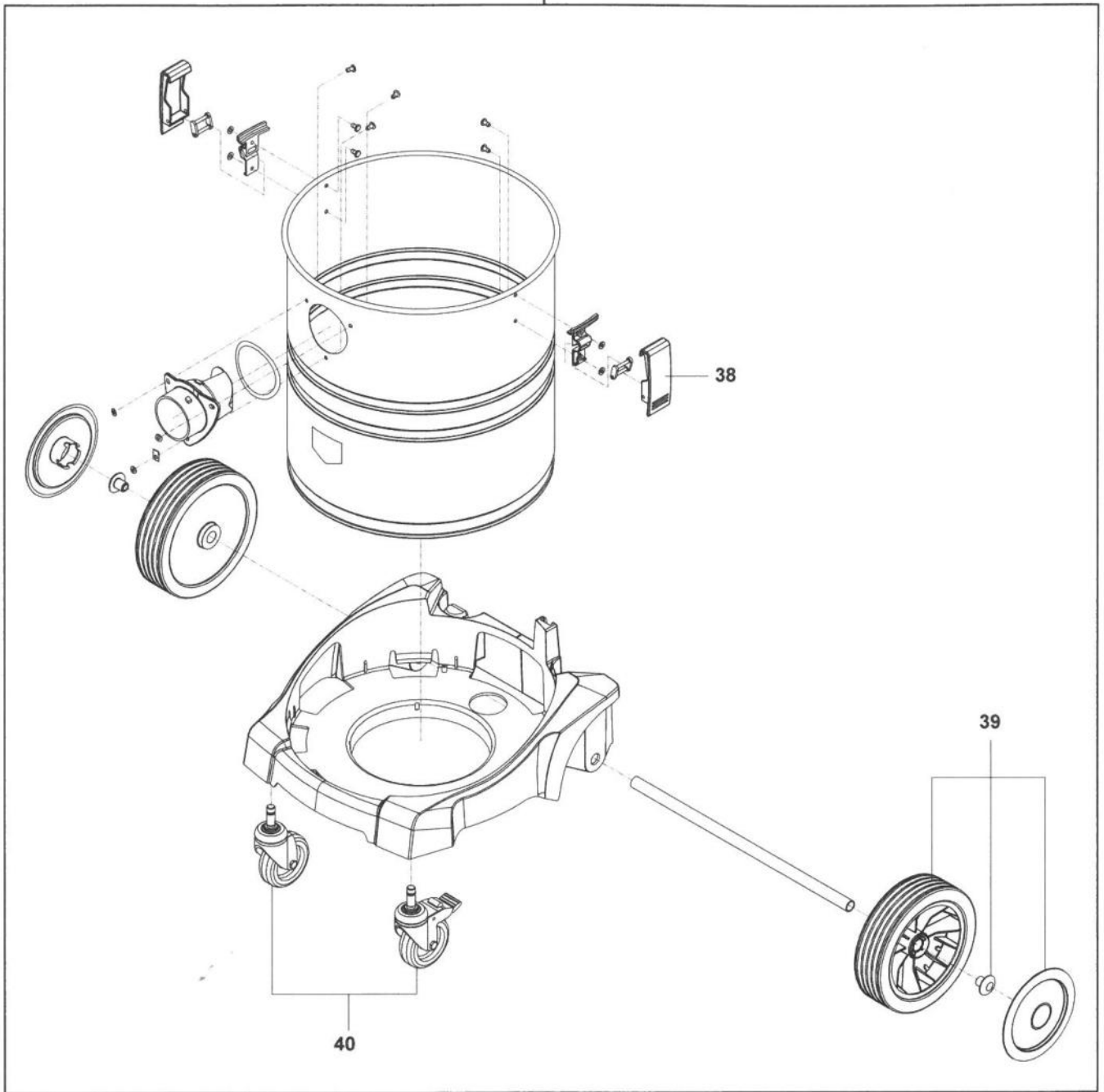


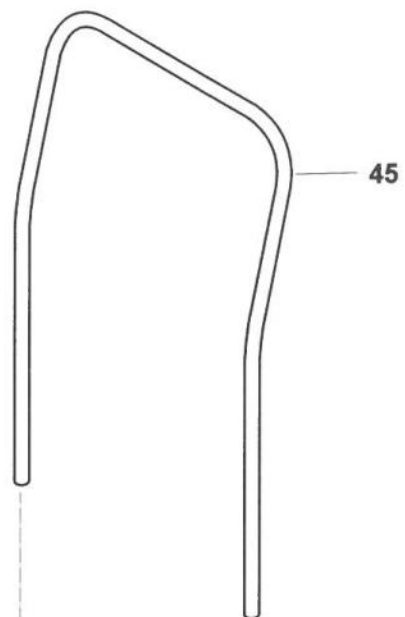


28 - 20l
29 - 32l

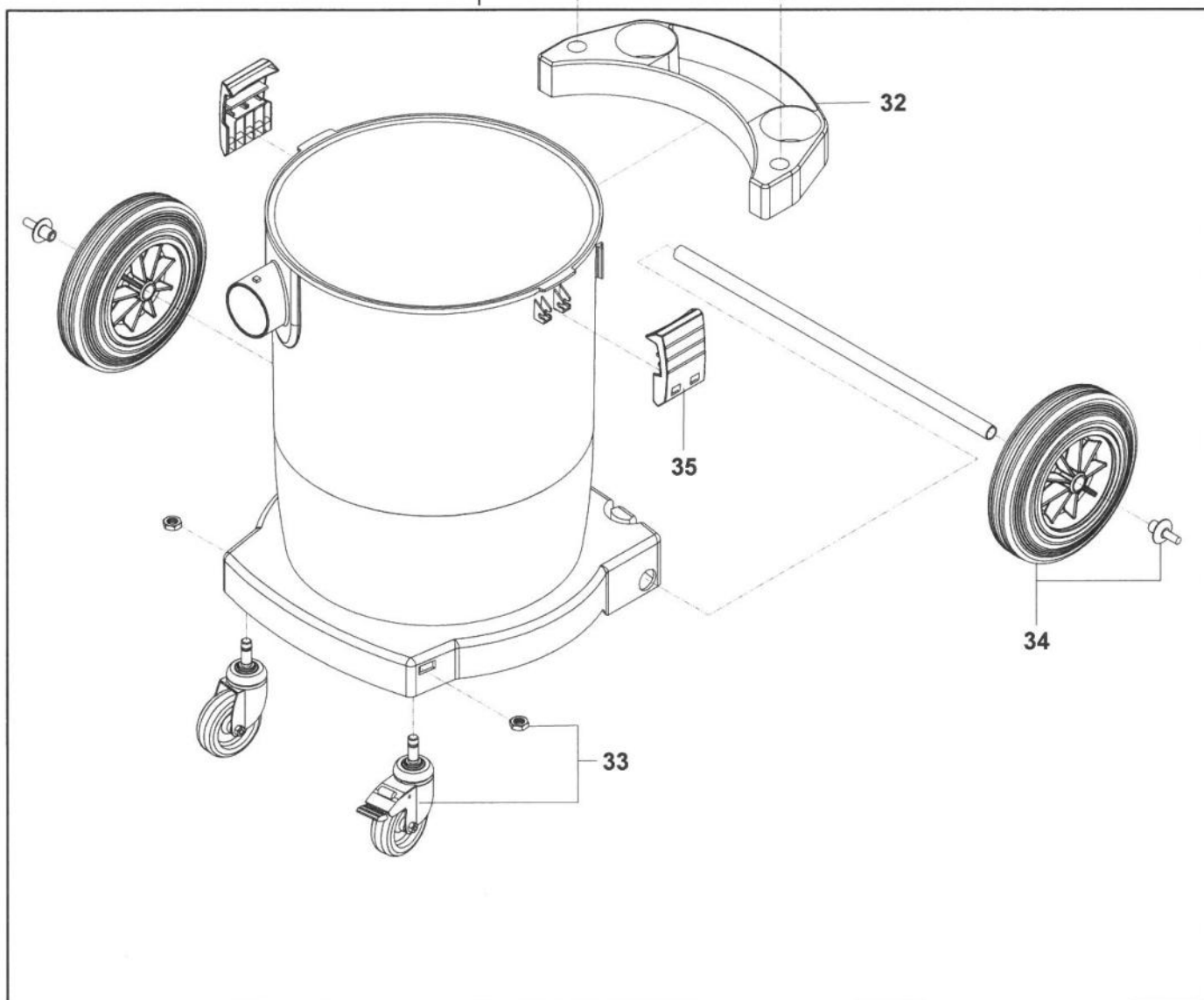


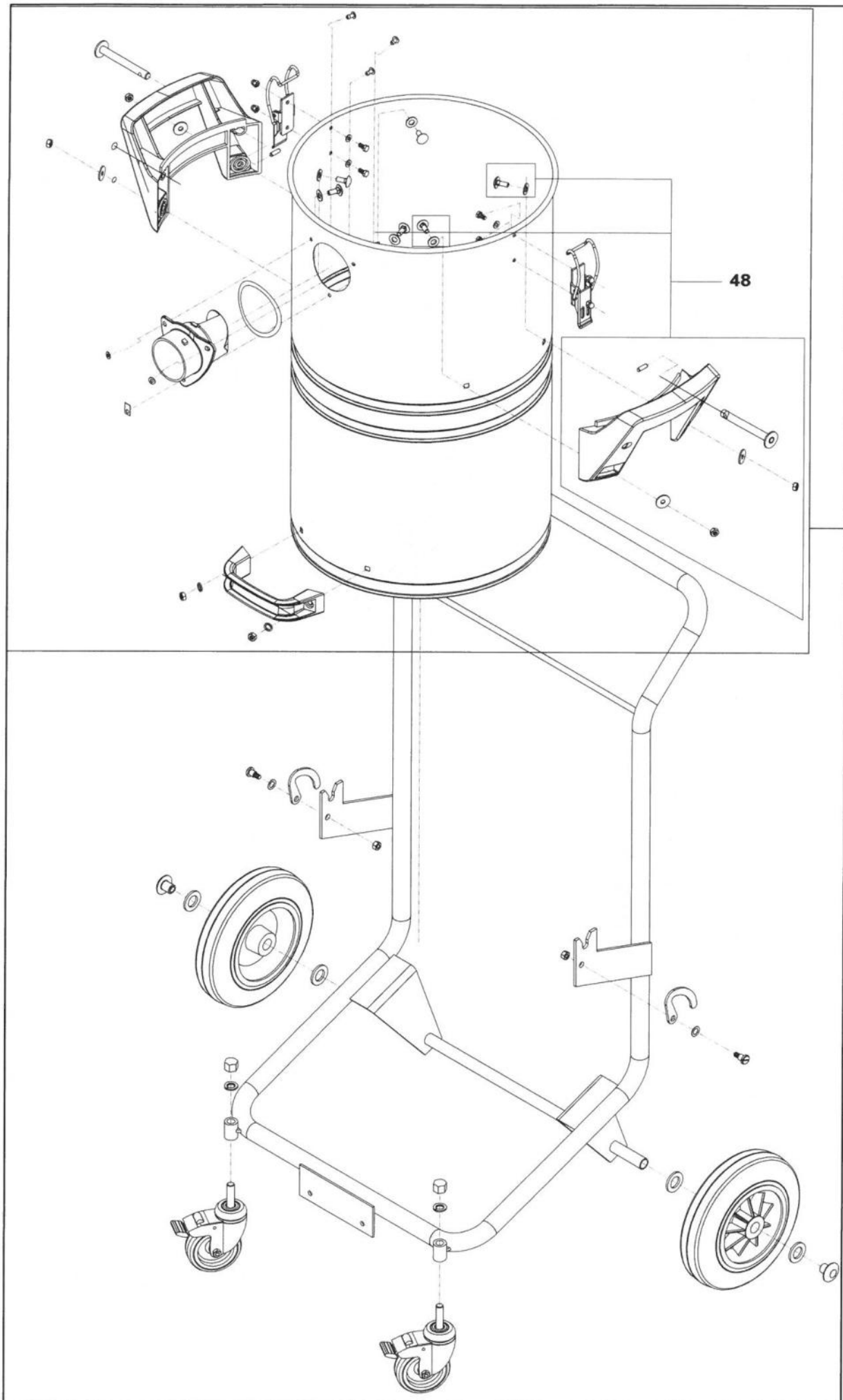
30 - 35L
37 - 22L
42 - 30L





31 - 45 |





48

43 -55I

36
-55I KFG