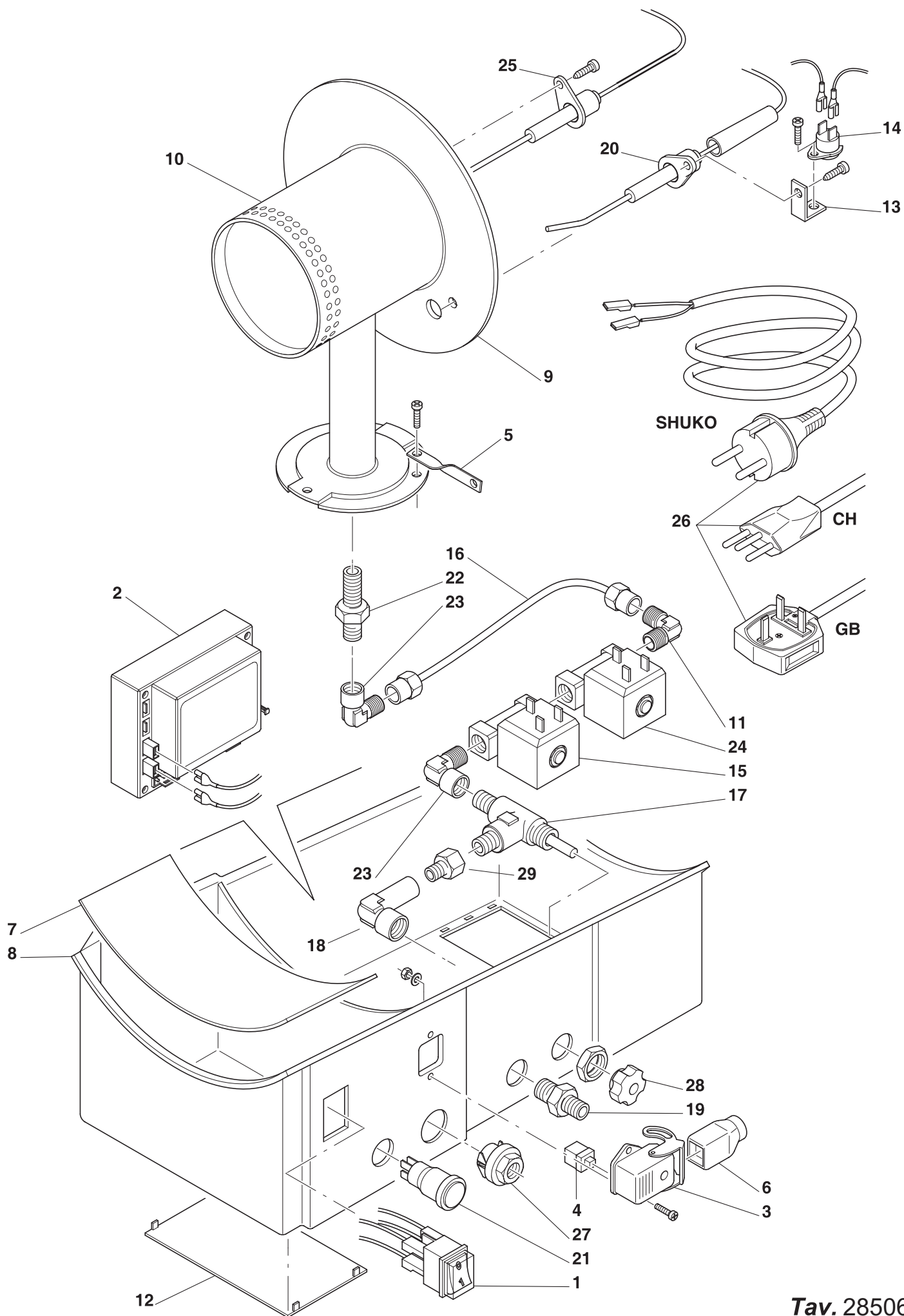


**ESPLOSO BASE COMPLETA / COMPLETE BASE SPARE PARTS / BASE
COMPLET PIECES DERECHARGE / VOLLSTANDIG GRUND ERSATZTEILE
BASE COMPLETA PIEZAS DE REPUESTO K2C- G 250 E - 300 E**



**ESPLOSO BASE / BASE SPARE PARTS / BASE PIECES DERECHANGE / VOLLSTANDIG GRUND ERSATZTEILE
BASE PIEZAS DE REPUESTO K2C - G 250E - 300E**

Cod. 2850633

Pos.	250	300	Italiano	English	Français	Deutsch	Español
1	0350605	0350605	INTERRUTTORE	SWITCH	INTERRUPTEUR	HAUPTSCHALTER	INTERRUPTOR
2	1500388	1500388	SCHEDA BRAHMA DMN31	ELECTRONIC DEVICE	BOETE ELECTRIC	SCHALKASTEN	CAJA ELECTRICA
3	1520117	1520117	CUSTODIA FISSA ANGOLO	FIXED GUARD	BOITIER FIX	FESTE KAPSELUNG	CUBIERTA
4	1520093	1520093	FRUTTO PRESA ILME	SOCKET	PRISE	STECKDOSE	TOMA
5	2502134	2502134	STAFFA ATTACCO TERRA	STIRRUP	ETRIER	STEIGBUGEL	ESTRIBO
6	1520122	1520122	SPINA COMPLETA	COMPLETE PLUG-IN	PRISE COMPLETE	KOMPLETE STECKER	ENTRADA
7	2501884	2501884	SELLA SCATOLA COMANDI	BEARING SADDLE	SELLE BOITE COMMANDES	VERSCHLUß	BASE
8	2504724	2504724	SCATOLA COMANDI	SWITCH BOARD	SOCLE	GRUNDRAHMEN	CAJA
9	2503379	2503379	DISCO DEFLETTORE	DEFLECTOR DISC	DISQUE DEFLECTEUR	ABWEISERSCHEIBE	PROTECCIÓN
10	1600073	1600073	BRUCIATORE	GAS BURNER	BRUILEUR GAZ	GASBRENNER	QUEMADOR
11	0362341	0362341	CURVA 90° 1/8M	90 DEGREE ELBOW	COUDE 90°	ANSCHLUßWINKEL 90°	CURVA
12	2501883	2501883	CHIUSURA COLLAUDO	TUCK OPENING	COUVERCLE VERIFICAT.	AUSSCHALTUNG	CUBERTA
13	2501178	2501178	STAFFA PORTA TERMOSTATO	PLATE	ETRIER	FORMKASTEN	ESTRIBO
14	1500329	1500329	TERMOSTATO DI SICUREZZA	SAFETY THERMOSTAT	THERMOSTAT DE SECURITE	THERMOSCHALTER	TERMOSTATO DE SEGUR.
15	1680059	1680059	ELETTROVALVOLA	ELECTRO-VALVE	ELECTROVANNE	MAGNETVENTIL	ELECTROVÁLVULA
16	2500758	2500758	RICCIO RAME	PIPE	TUYAU	ROHR	RIZO DE BRONCE
17	1680239	1680241	RUBINETTO GAS	GAS SUPPLY TAP	ROBINET DE GAZ	GASHAHN	CIERRE DE GAS
18	2501969	2501969	CURVA 90° 1/8F 1/4F	90 DEGREE ELBOW	COUDE 90°	ANSCHLUßWINKEL 90°	CURVA
19	2503191	2503191	NIPPLO ENTRATA GAS	NIPPLE	RACCORD A "T"	NIPPEL	NIPLE
20	2504725	2504725	ELETTRODO ACCENSIONE	IGNITION ELECTRODE	ELECTRODE D'ALLUMAGE	ZÜNDELEKTRODE	ELECTRODO
21	1500386	1500386	PULSANTE TASTO ROSSO	PUSH BUTTON	INTERRUPTEUR	HAUPTSCHALTER	INTERRUPTOR
22	1940113	1940139	UGELLO GAS	GAS NOZZLE	INJECTEUR DE GAZ	GASDÜSE	MANGUERA
23	0362339	0362339	CURVA 90°	90 DEGREE ELBOW	COUDE 90°	ANSCHLUßWINKEL 90°	CURVA
24	1680200	1680200	ELETTROVALVOLA	ELECTRO-VALVE	ELECTROVANNE	MAGNETVENTIL	ELECTROVÁLVULA
25	2504526	2504526	ELETTRODO MONOFILARE	ELECTRODE	ELECTRODE	EKTRODE	ELECTRODO
26	2200062	2200062	CAVO ALIMENTAZIONE SCHUKO	ELECTRIC CABLE	CABLE ELECTRIQUE	ELEKTROKABEL	CABLE ELÉCTRICO
	2200077	2200077	CAVO ALIMENTAZIONE UK	ELECTRIC CABLE	CABLE ELECTRIQUE	ELEKTROKABEL	CABLE ELÉCTRICO
	2200088	2200088	CAVO ALIMENTAZIONE CH	ELECTRIC CABLE	CABLE ELECTRIQUE	ELEKTROKABEL	CABLE ELÉCTRICO
27	0350715	0350715	PRESSACAVO	CABLE RET.	PRESSE CABLE	KABEL ZUG.	PREME-CABLE
28	1900162	1900162	MANOPOLA	GRIP	POIGNÉE	GRIFF	MANGO
29	2502472	2502472	PROLUNGA OTTONE	EXTENSION BRASS	LAITON DE PROLONGATION	VERLÄNGERUNG MESSING	LATÓN DE LA EXTENSIÓN