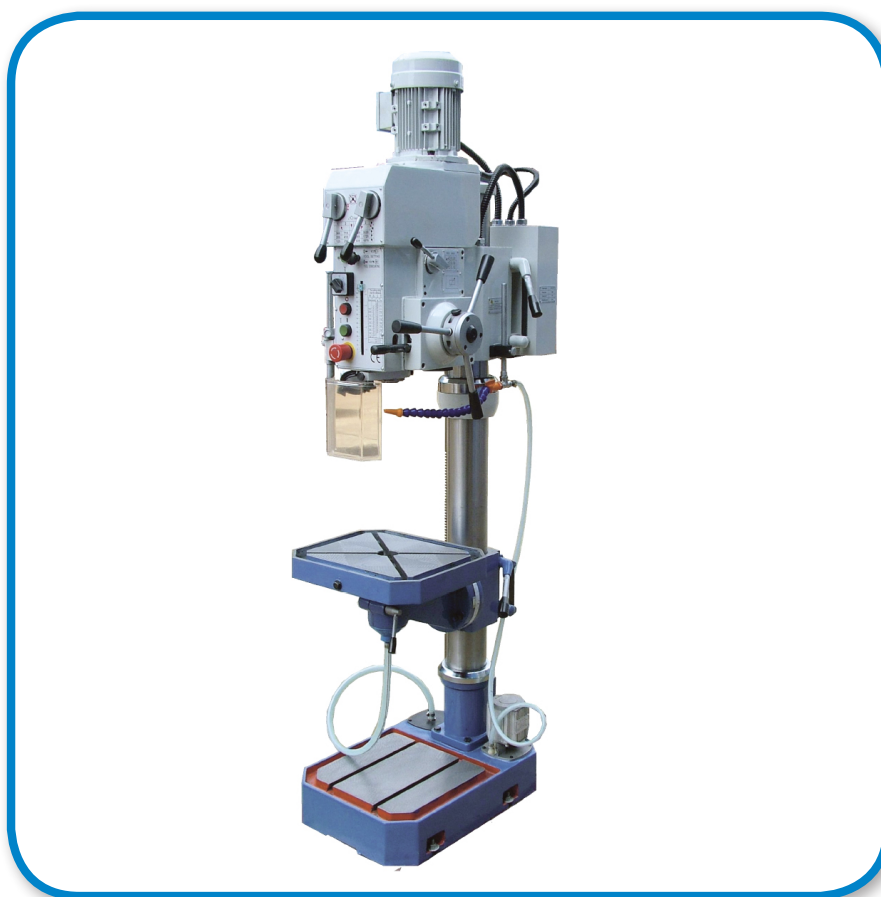
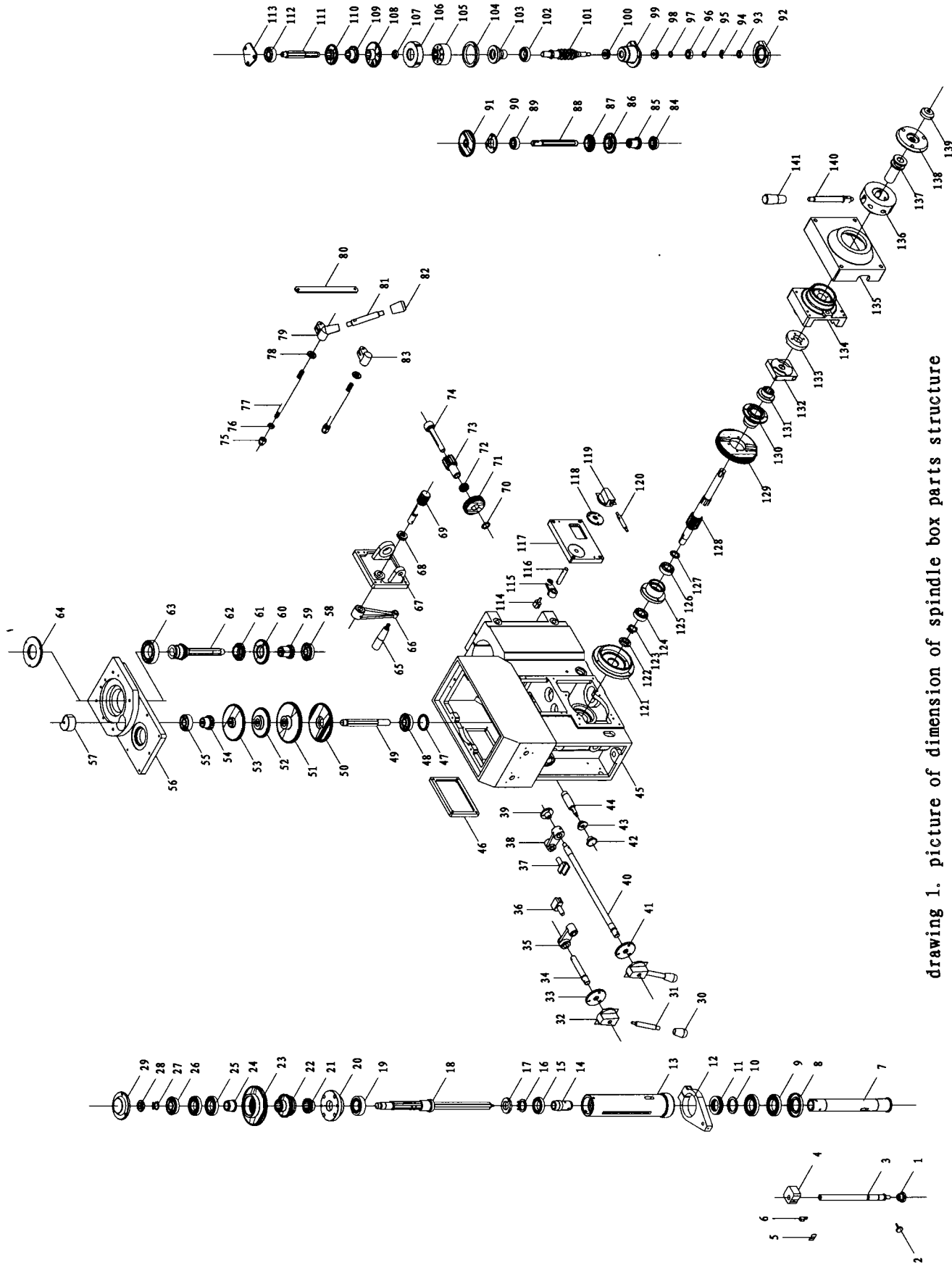


Spareparts



KOLOMBOORMACHINE/ FOREUSE A COLONNE GT 35 M

Bestelnr./N° de cde. 35066



drawing 1. picture of dimension of spindle box parts structure

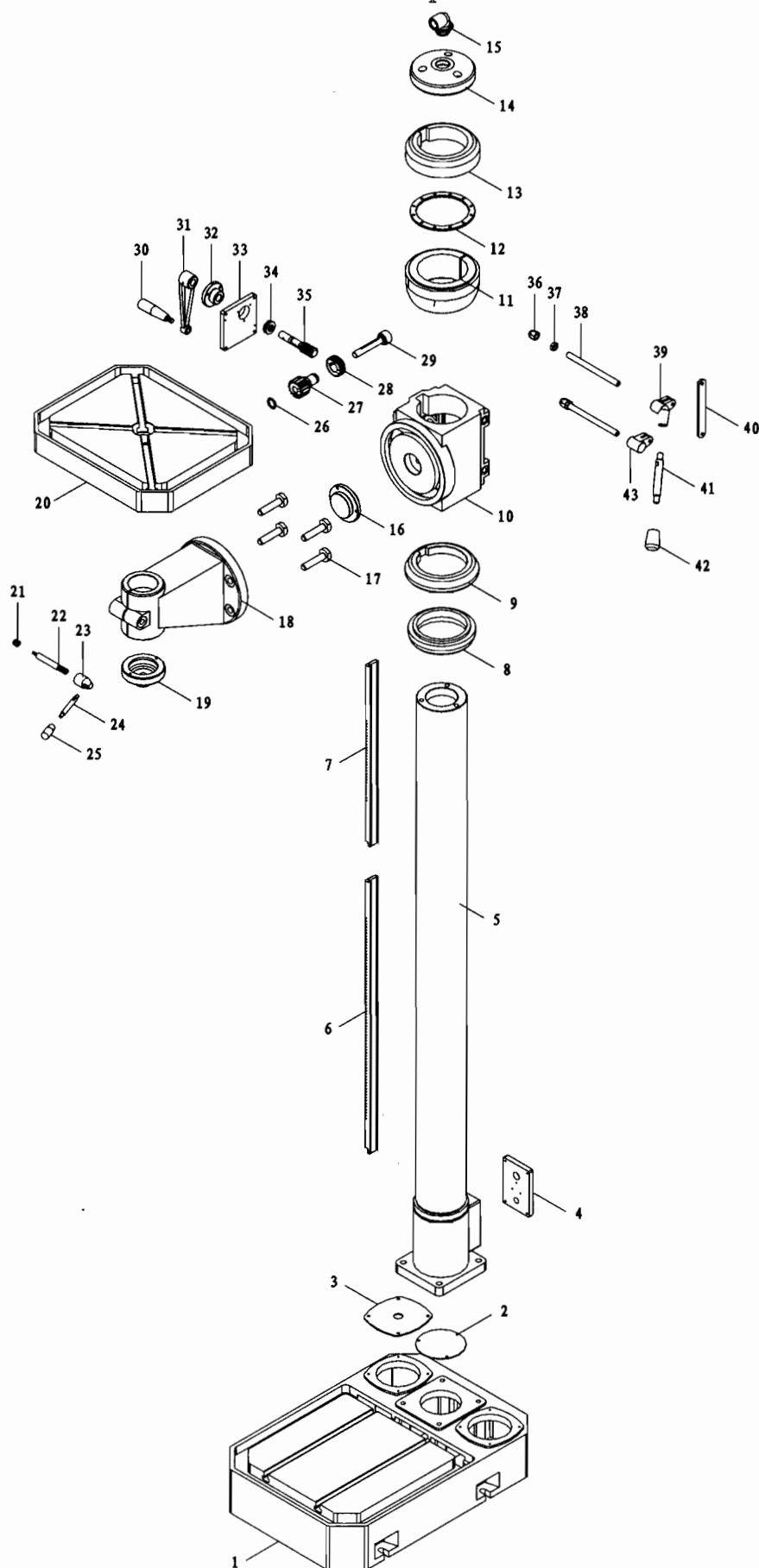
Model ZN5030B		Ancillary page of Operation Manual	page 2	
Contrast for the parts number of ZN5030B spindle box and its three dimensions sketch.				
No.	Parts number	Name of the parts	Q'ty	Remarks
1	32001/ZS5030	Knurled knob	1	
2	32002/ZS5030	Knurled screw bolt	1	
3	32001/ZS5025A	Scaled bolt	1	
4	31002/ZS5025A	Scaled nut	1	
5	35001/ZS5030	Scaled indicator sheet	1	
6	32004/ZS5030	Support for the indicator	1	
7	32002/ZS5025A	Main spindle	1	
8	32003/ZS5025	Bearing cover	1	
9	D7000107; GB276	Bearing	2	
10	32004/ZS5025	Washer	1	
11	8107; GB301	Bearing	1	
12	31002/ZS5025	Scale clamper	1	
13	32003/ZS5025A	Spindle quill	1	
14	32040/ZS5030	Spline sleeve	1	
15	D1000906; GB276	Bearing	1	
16	32042/ZS5030	Washer	1	
17	32043/ZS5030	Nut	1	
18	32004/ZS5025A	Transmission shaft	1	
19	2007106; GB297	Bearing	1	
20	32046/ZS5030	Bearing seat	1	
21	32005/ZS5030A	Feed gear	1	
22	32006/ZS5030	Gear	1	
23	32008/ZS5030	Gear	1	
24	32007/ZS5030	Bushing	1	
25	7000106; GB276	Bearing	2	
26	50204; GB277	Bearing	1	
27	18; GB858	Washer	1	
28	M18X1.5; GB812	Nut	1	
29	31004/ZS5030	Cover	1	
30	1.222/40-M8; 21101	Knob	2	
31	32032/ZS5030	Lever	2	
32	32031/ZS5030	Lever seat	2	
33	32028/ZS5030	Positioning Washer	1	
34	32029/ZS5030	Short fork shaft	1	
35	31013/ZS5030	Lever	1	
36	34007/ZS5030	Front fork	1	

Model ZN5030B		Ancillary page of Operation Manual	page 3	
Contrast for the parts number of ZN5030B spindle box and its three dimensions sketch.				
No.	Parts number	Name of the parts	Q'ty	Remarks
37	34008/ZS5030	Rear fork	1	
38	31013/ZS5030	Lever	1	
39	31014/ZS5030	Shaft sleeve	1	
40	32033/ZS5030	Long fork shaft	1	
41	32030/ZS5030	Positioning Washer	1	
42	M8X32; GB4141.27	Knurled handle	1	
43	32045/ ZS5030	Bushing	1	
44	32044/ ZS5030	Positioning shaft	1	
45	31001/ZS5025A	Spindle box	1	
46	31012/ZS5030	Cover	1	
47	31008/ ZS5030	Cover	2	
48	50303; GB277	Bearing	1	
49	32018/ZS5030	Spline shaft	1	
50	32002/ ZS5030A	Feed gear	1	
51	32016/ ZS5030	Gear	1	
52	32014/ ZS5030	Gear	1	
53	32010/ ZS5030	Gear	1	
54	32009/ ZS5030	Gear	1	
55	303; GB276	Bearing	1	
56	31007/ ZS5030	Cover	1	
57	31005/ ZS5030	Bearing cover	1	
58	50303; GB277	Bearing	1	
59	32013/ ZS5030	Gear	1	
60	32012/ ZS5030	Gear	1	
61	32011/ ZS5030	Gear	1	
62	32015/ZS5030	Spline shaft	1	
63	108; GB276	Bearing	1	
64	31006/ZS5030	Bearing cover	1	
65	M10X80;GB4141.5	Hand quill for turning	1	
66	11014/ZS5030	Up and down handle for bracket	1	
67	31004/ZS5032	Up and down seat	1	
68	8103;GB301	Thrusting bearing	1	
69	32001/ZS5032	Up and down worm wheel	1	
70	12019/ZS5030	Washer	1	
71	31005/ZS5032	Up and down worm wheel for spindle box	1	
72	31006/ ZS5032	Sleeve	1	

Model ZN5030B		Ancillary page of Operation Manual		page 4
Contrast for the parts number of ZN5030B spindle box and its three dimensions sketch.				
No.	Parts number	Name of the parts	Q'ty	Remarks
73	32002/ ZS5032	Gear	1	
74	32003/ ZS5032	Shaft	1	
75	M12;GB923	Cover type nut	2	
76	M12;GB6172	Thin nut	2	
77	32004/ZS5032	Double end bolt	2	
78	12013/ZS5030	Washer	2	
79	31004/ZS5025A	Connecting lever for hand seat	1	
80	32005/ZS5032	Connecting block bracket	1	
81	M12x80;GB4141.15	Hand lever	1	
82	M12x40;GB4141.12	Lever quill	1	
83	11010/ZS5030	Nut for clamping board	1	
84	50202;GB277	Bearing	1	
85	32004/ZS5030A	Feed gear	1	
86	32010/ZS5030A	Feed gear	1	
87	32009/ZS5030A	Feed gear	1	
88	32005/ZS5025A	Spline shaft(III)	1	
89	202;GB276	Bearing	1	
90	32007/ZS5030A	Bearing cover	1	
91	32008/ZS5030A	Feed gear	1	
92	32027/ZS5030A	Cover	1	
93	M10x1;GB812	Nut	1	
94	10;GB858	Washer	1	
95	32025/ZS5030A	Washer	1	
96	101;GB276	Bearing	1	
97	32024/ZS5030A	Washer	1	
98	8101;GB301	Bearing	1	
99	32026/ZS5030A	Bearing seat	1	
100	8102;GB301	Bearing	1	
101	32023/ZS5030A	Worm shaft	1	
102	1000905;GB276	Bearing	1	
103	32022/ZS5030A	Clutch seat	1	
104	32021/ZS5030A	Nut	1	
105	32018/ZS5030A	Overload protection sleeve	1	
106	32020/ZS5030A	Nut	1	
107	32017/ZS5030A	Washer for adjusting	1	
108	32016/ZS5030A	Feed gear	1	

Model ZN5030B		Ancillary page of Operation Manual		page 5
Contrast for the parts number of ZN5030B spindle box and its three dimensions sketch.				
No.	Parts number	Name of the parts	Q'ty	Remarks
109	32015/ZS5030A	Feed gear	1	
110	32014/ZS5030A	Feed gear	1	
111	32006/ZS5025A	Spline shaft(IV)	1	
112	302;GB276	Bearing	1	
113	32011/ZS5030A	Bearing cover	1	
114	34008/ZS5030A	Fork	1	
115	31006/ZS5030A	Connection block	1	
116	32037/ZS5030A	Shaft	1	
117	31003/ZS5025A	Side cover	1	
118	32035/ZS5030A	Positioning board	1	
119	32036/ZS5030A	Lever seat	1	
120	32038/ZS5030A	Hand lever	1	
121	31011/ZS5030	Spring box cover	1	
122	M20x1.5;GB812	Nut	1	
123	20;GB858	Washer	1	
124	36104;GB292	Bearing	1	
125	32006/ZS5030B	Bearing cover	1	
126	36104;GB292	Bearing	1	
127	32005/ZS5030B	Washer	1	
128	32007/ZS5030B	Cross shaft	1	
129	31013/ZS5030B	Worm shaft	1	
130	32004/ZS5030B	Connector	1	
131	32008/ZS5030B	Gear cover	1	
132	32009/ZS5030B	Moving block	1	
133	32010/ZS5030B	Fixed convex surface	1	
134	31004/ZS5030B	Cross shaft support	1	
135	31006/ZS5030B	Side cover	1	
136	31005/ZS5030B	Lever seat	1	
137	32012/ZS5030B	Moving sleeve	1	
138	32014/ZS5030B	Lever seat cover	1	
139	32013/ZS5030B	Cover	1	
140	32011/ZS5030B	Lever	3	
141	35002/ZS5030	Knob	3	

drawing 2. picture of dimensions sketch of
column and bracket parts structure



Model ZN5030B		Ancillary page of Operation Manual	page 7	
Contrast for the parts number of ZN5030B column and bracket and its three dimension sketch.				
No.	Parts number	Name of the parts	Q'ty	Remarks
1	11001/ZS5025	Base	1	
2	12002/ZS5025	Cover	1	
3	12008/ZS5030	Cover board	1	
4	11008/ZS5025	Cover	1	
5	11003/ZS5025A	Column	1	
6	12003/ZS5025A	Up and down rack for worktable and its bracket	1	
7	12001/ZS5025A	Up and down rack for spindle box	1	
8	11002/ ZS5025	Thrusting sleeve	1	
9	11003/ ZS5025	Stop ring (below)	1	
10	11008/ ZS5025	Up and down device	1	
11	11001/ ZS5025A	Clamping ring	1	
12	12002/ZS5025A	Rolling ring	1	
13	11002/ ZS5025A	Stop ring(above)	1	
14	11004/ ZS5025A	Coping of column	1	
15	11005/ ZS5025A	Elbow bend	1	
16	12010/ ZS5030	Positioning shaft	1	
17	12005/ ZS5030	T type screw bolt	4	
18	11005/ZS5025	Device for bracket	1	
19	11004/ZS5025	Rind	1	
20	11009/ZS5025	Worktable tray	1	
21	M8; GB923	Cover type nut	1	
22	12001/ZS5025	Double end bolt	1	
23	M12x25;GB4141.16	Lever seat	1	
24	M8x65;GB4141.15	Hand lever	1	
25	M8x40;GB4141.14	Long hand quill	1	
26	12019/ZS5030	Washer	1	
27	12005/ZS5025	Gear	1	
28	12006/ ZS5025	Tilted gear	1	
29	12018/ZS5030	Shaft	1	
30	M10x80;GB4141.5	Lever for turning	1	
31	11014/ZS5030	Lever for bracket	1	
32	11016/ZS5030	Flange	1	
33	11011/ZS5025	Up and down for side cover	1	
34	8103;GB301	Thrusting bearing	1	
35	12014/ZS5030	Warm shaft	1	
36	M12;GB923	Cover type nut	2	

[illegible]