



## Spareparts



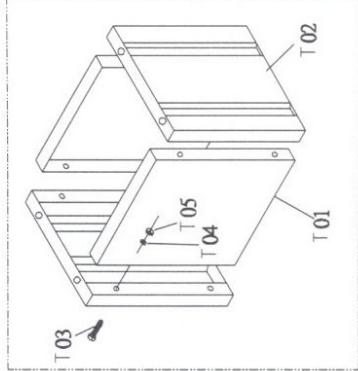
**BANDZAAGMACHINE BS 325**  
**SCIE A RUBAN BS 325**

**CE**

**Bestelnr./N° de cde. 50094**

95

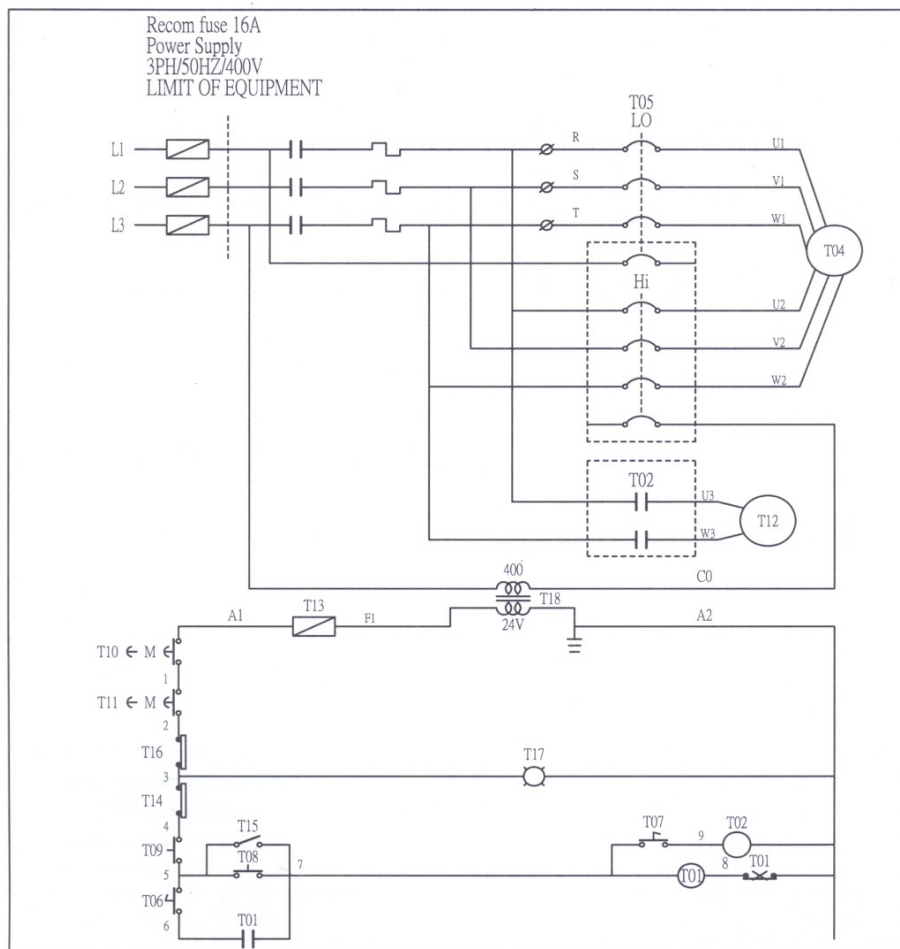
OPTIONAL



## PARTS LIST BS 325

Ref. No. Description	Ref. No. Description	Ref. No. Description
1. Washer	44. Grip	87. Scale
2. Base	45. Pin	89. Hydraulic cylinder
3. Bar stop rod	46. Handwheel	90. Pin
4. Cool pump	47. Return flywheel	91. Fixed bladeguide plate
5. Bar stop	48. Hex. nut	92. Mobile bladeguide plate
6. Countervise	49. Bearings 2Z	93. Bush
7. Screw M5	50. Saw blade	94. Toger switch
8. Vice jaw	51. C-ring	95. Condenser(motor)(optional)
9. Vice	52. Hex. nuts	96. Coolant distributor
10. Body frame	53. Blade sheel shaft	97. Stand
11. Casing	54. Block blade tension	98. Nut M10
12. Motor Fan	55. Handle	99. Screw M8*15
13. Motor Cover	56. Lever	100. Washer
14. Connection Plate	57. Vice screw	101. Plate
16. Rollerway	58. R. Bladeguard	102. Bladeguide unit square
17. Filter	59. Vice spring	103. Bladeguide unit
18. Bush	60. Vice lever	104. Blade tension guide
19. Pin	61. Bearing	105. Blade tension gauge (optional)
20. Lever	62. Bearing cover	106. Guide pivot
21. Knob	63. Vice handwheel	107. Guide pivot
22. Key 7x7	64. Spring	108. 33MM*MS screw
23. Bearing	65. Screw	109. C-ring
24. Motor flywheel	67. Revolving arm	110. Vice piece
25. Washer	68. Shaft	111. Screw
26. Shaft	69. Stop bolt	112. Vice jaw
27. Blade cover	70. Micro switch(optional)	113. Vice sliding seat
28. Ring nilons	71. Block	114. Switch Bracket
29. Bearing 32006	72. Hex. nuts	115. Electrical box
30. Ring nut M30	73. Rubber connection	116. On /Off Oil Switch
31. Pivot	74. Arm	117. Handle
32. Bearing cover	75. Bolt	118. Bolt
33. Washer	76. Blade guard	119. Washer
34. Key 4x25	77. Handle	120. Adjusting Button
35. Reducer	78. Screw M10	121. Emergency Stop
36. Motor	79. Bearing 6082Z	122. Screw
37. Screw	80. Screw M8	123. Bracket
38. Spring	81. Water pipe	124. Handle
39. Plug	82. Rust plate	125. Square
40. Micro switch(optional)	83. Vice pad	126. Nut
41. Screw M8	84. Bush	127. Washer
42. Threaded shaft	85. Switch set	
43. Spring washer	86. 24V switch set	

## ELECTRICAL CIRCUIT DIAGRAM



Electrical parts list

Part No	Name	Description	Producer	Mark
T01	MS1	MS0	SHIHLIN	CE
T02	MS2	RELEY 12A	RY	CE
T03	BOX	CONTROL BOX	GOROGE	CE IP55
T04	M1	SAW MOTOR	GOROGE	CE
T05	CAM SWITCH	SPEED/POWER SWITCH	KONCAR	CE
T06	A/M	TYPE SWITCH	TELEMECANIQUE	CE
T07	COOL	PUMP SWITCH	TELEMECANIQUE	CE
T08	ON	I SWITCH	TELEMECANIQUE	CE
T09	OFF	O SWITCH	TELEMECANIQUE	CE
T10	EMS1	EMERGENCY STOP	CIRO	CE
T11	EMS2	EMERGENCY STOP	CIRO	CE
T12	M2	COOL PUMP	GOROGE	CE
T13	F1	FUSE	DEMEX	CE
T14	DOWN MICRO	MICRO SWITCH	GIOVENZANA	CE
T15	START MICRO	MICRO SWITCH	HAILY	CE
T16	SAFE MICRO	MICRO SWITCH	HAILY	CE
T17	LAMP		TELEMECANIQUE	CE
T18	TR	TRANSFORM	GOROGE	CE