



Spareparts

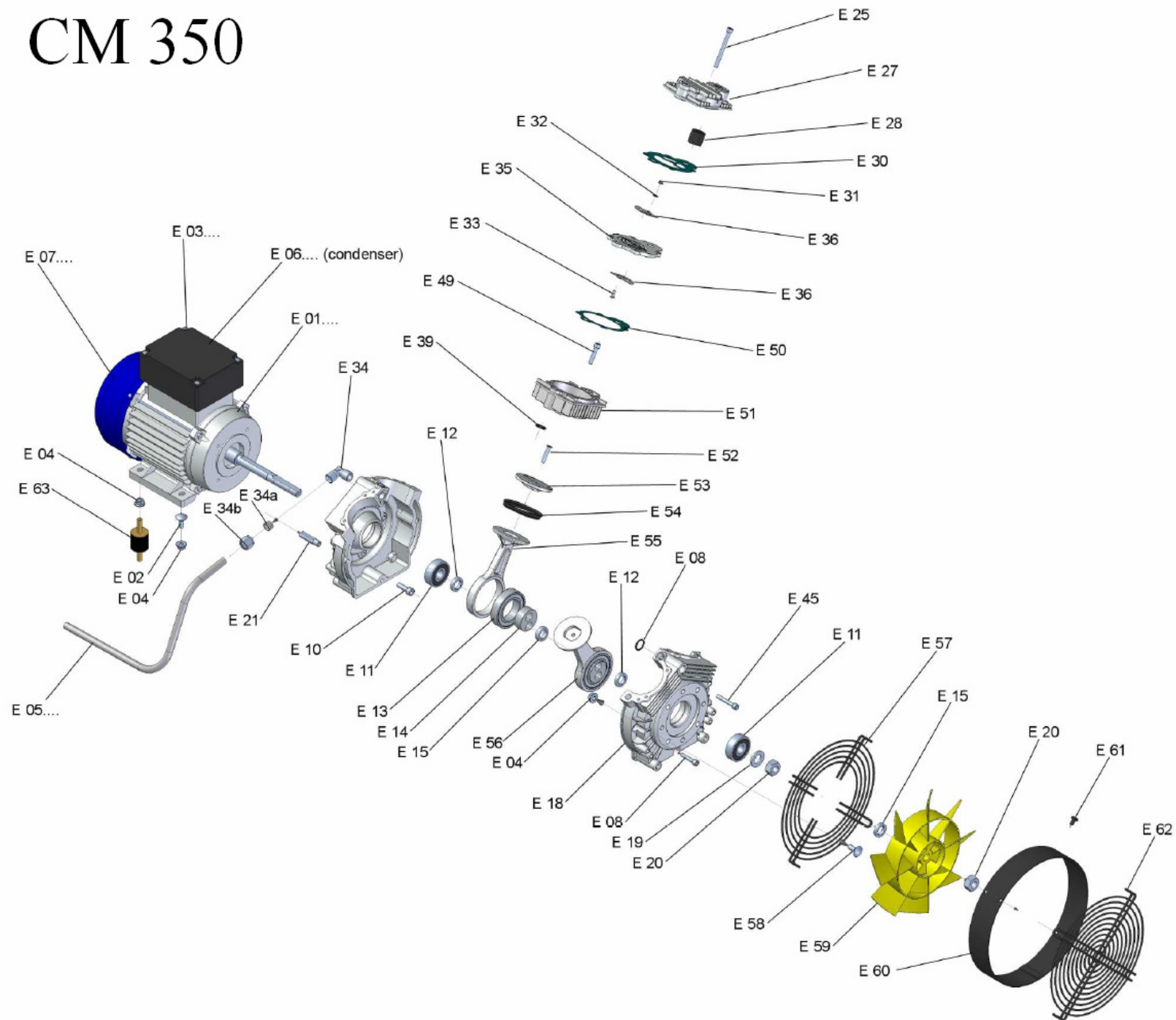
COMPAC PRO 350 **CE**

Bestelnr./N° de cde 20430

CM 350/10/24 WF **CE**

Bestelnr./N° de cde 25190

CM 350



CODE	DESCRIPTION	CODE	DESCRIPTION	CODE	DESCRIPTION
E01 2,0*/230-50	Electric motor 2,0 Hp 230 Volt 50 Hz 2800 rpm	E10	Screw for fixing compressor monobloc	E36	Lamella
E01 2,0P/230-60	Electric motor 2,0 Hp 230 Volt 60 Hz 3400 rpm	E11	Bearing for compressor monobloc	E39	Cylinder O-ring
E02	Screw for electric engine	E12	Trick ness bearing short 5,5 mm	E44	O-ring for compressor monobloc
E03 S	Plastic cover for electric engine small	E13	Bearing for connecting rod	E45	Screw for fixing compressor monobloc
E03 B	Plastic cover for electric engine Big	E14	Eccentric	E49	Screw for fixing head cyl. diam.70mm
E04	Nut for fixing electric engine	E15	Trick ness bearing high 7,0 mm	E50	Cylinder gasket 0,8 mm diam.70mm
E05 3T	Aluminum tube tank 3T model 1-1,5 cv	E18 + E09	Compressor Monobloc + E09	E50 0.3	Cylinder gasket 0,3 mm diam.70mm
E05 3T 2CV	Aluminum tube tank 3T model 2 cv	E19	Washer	E50 0.5	Cylinder gasket 0,8 mm diam.70mm
E05 3-30L	Aluminum tube tank 3-30 Liter model 1-1,5 cv	E20	Nut M16	E51 A	Cylinder Chrome HIGH diam.70mm
E05 3-30L 2CV	Aluminum tube tank 3-30 Liter model 2 cv	E21	Stud bolt	E52	Screw for piston top cyl. diam.70mm
E05 3-50L	Aluminum tube tank 3-50 Liter model 1-1,5 cv	E27	Head	E53	Piston top diam.70mm
E05 3-50L 2CV	Aluminum tube tank 3-50 Liter model 2 cv	E28	Top filter	E54	Piston seal diam.70mm
E05 1-10C	Aluminum tube tank 1-10 Liter model 1-1,5 cv	E30	Top gasket	E55	Connecting rod diam.70mm
E05 1-10C 2CV	Aluminum tube tank 1-10 Liter model 2 cv	E31	Nut for valve plate	E56	Connecting rod Complete diam.70mm
E05 1-25C	Aluminum tube tank 1-25 Liter model 1-1,5 cv	E32	Washer for valve plate	E57	Metal Wire
E05 1-25C 2CV	Aluminum tube tank 1-25 Liter model 2 cv	E33	Screw for valve plate	E58	Screw for metal wire
E05 SIL50	Flexible tube for extreme silenced 1-1,5-2 cv	E34	Air exit connector	E59	Plastic fan
E05 DENT.	Flexible tube for extreme dental 1-1,5-2 cv	E34 A	Ogive for aluminum tube	E60	Metal Cover Fan
E07 MEC 90	Cover fan for electric engine MEC 90	E34 B	Nut for tube diam. 12 mm aluminum	E61	Screw for cover fan
E08	Screw for fixing monobloc	E35	Valve plate	E62	Metal Wire
E09 + E18	Compressor Monobloc + E18	E35*	Valve plate complete	E63	No vibration rubber