



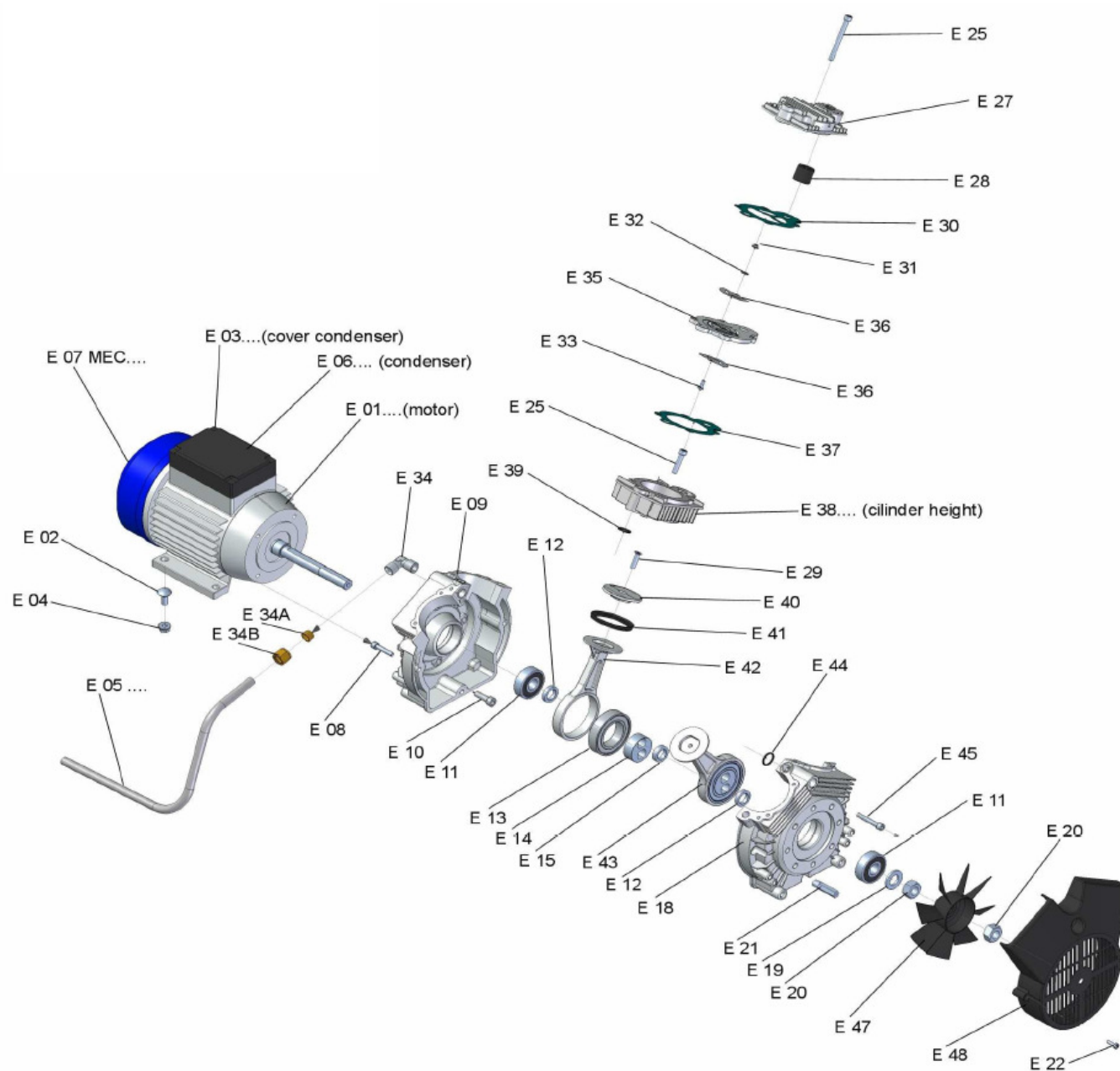
Spareparts



COMPACT 12/24 V

CE

Bestelnr./N° de cde. 20259



| CODE | DESCRIPTION | CODE | DESCRIPTION | CODE | DESCRIPTION |
|--------------------------|---|-------------------|--------------------------------------|----------------|---|
| E01 1,0/230-50 | Electric motor 1,0 Hp 230 Volt 50 Hz 1400 rpm | F06 16 | Condenser 16µF | E29 | Screw for piston top |
| E01 1,0/230-60 | Electric motor 1,0 Hp 230 Volt 60 Hz 1700 rpm | F06 25 | Condenser 25µF | E30 | Top gasket |
| E01 1,5/230-50 | Electric motor 1,5 Hp 230 Volt 50 Hz 1400 rpm | F06 36 | Condenser 36µF | E31 | Nut for valve plate |
| E01 1,5/230-60 | Electric motor 1,5 Hp 230 Volt 60 Hz 1700 rpm | F06 40 | Condenser 40µF | E32 | Washer for valve plate |
| E01 1,5/110-50 | Electric motor 1,5 Hp 110 Volt 50 Hz 1400 rpm | F06 60 | Condenser 60µF | E33 | Screw for valve plate |
| E01 1,5/110-60 | Electric motor 1,5 Hp 110 Volt 60 Hz 1700 rpm | F06 70 | Condenser 70µF | E34 | Air exit connector L |
| E01 1,5/230-60 UL | Electric motor 1,5 Hp 230 Volt 60 Hz 1700 rpm | F06 80 | Condenser 80µF | E34 A | Ogive for aluminum tube |
| E01 2,0/230-50 | Electric motor 2,0 Hp 230 Volt 50 Hz 2800 rpm | F07 MEC 80 | Cover fan for electric engine MEC 80 | E34 B | Nut for tube diam. 12 mm aluminum |
| E01 2,0/230-60 | Electric motor 2,0 Hp 230 Volt 60 Hz 3400 rpm | F07 MEC 90 | Cover fan for electric engine MEC 90 | E35 | Valve plate |
| E02 | Screw for electric engine | F08 | Screw for fixing monobloc | E35* | Valve plate complete |
| E03 S | Plastic cover for electric engine small | F09 + E18 | Compressor Monobloc + E18 | E36 | Lamella |
| E03 B | Plastic cover for electric engine Big | F10 | Screw for fixing compressor monobloc | E37 | Cylinder gasket 0,8 mm |
| E04 | Nut for fixing electric engine | F11 | Bearing for compressor monobloc | E37 0.3 | Cylinder gasket 0,3 mm |
| E05 3T | Aluminum tube tank 3T model 1-1,5 cv | F12 | Thickness bearing short 5,5 mm | E37 0.5 | Cylinder gasket 0,5 mm |
| E05 3T 2CV | Aluminum tube tank 3T model 2 cv | F13 | Bearing for connecting rod | E38 A | Cylinder Chrome HIGH 35,5mm diam. 60mm |
| E05 3-30L | Aluminum tube tank 3-30 Liter model 1-1,5 cv | F14 | Eccentric | E38 B | Cylinder Chrome Short 31,5mm diam. 60mm |
| E05 3-30L 2CV | Aluminum tube tank 3-30 Liter model 2 cv | F15 | Thickness bearing high 7,0 mm | E39 | Cylinder O-ring |
| E05 3-50L | Aluminum tube tank 3-50 Liter model 1-1,5 cv | F18 + E09 | Compressor Monobloc + E09 | E40 | Piston top diam. 60mm |
| E05 3-50L 2CV | Aluminum tube tank 3-50 Liter model 2 cv | F19 | Washer | E41 | Piston seal diam. 60mm |
| E05 1-10C | Aluminum tube tank 1-10 Liter model 1-1,5 cv | F20 | Nut M16 | E42 | Connecting rod diam. 60mm |
| E05 1-10C 2CV | Aluminum tube tank 1-10 Liter model 2 cv | F21 | Stud bolt | E43 | Connecting rod Complete diam. 60mm |
| E05 1-25C | Aluminum tube tank 1-25 Liter model 1-1,5 cv | F22 | Screw for cover fan | E44 | O-ring for compressor monobloc |
| E05 1-25C 2CV | Aluminum tube tank 1-25 Liter model 2 cv | F25 | Screw for fixing head | E45 | Screw for fixing compressor monobloc |
| E05 SIL50 | Flexible tube for extreme silenced 1-1,5-2 cv | F27 | Head | E47 | Plastic fan |
| E05 DENT. | Flexible tube for extreme dental 1-1,5-2 cv | F28 | Top filter | E48 | Cover fan |