

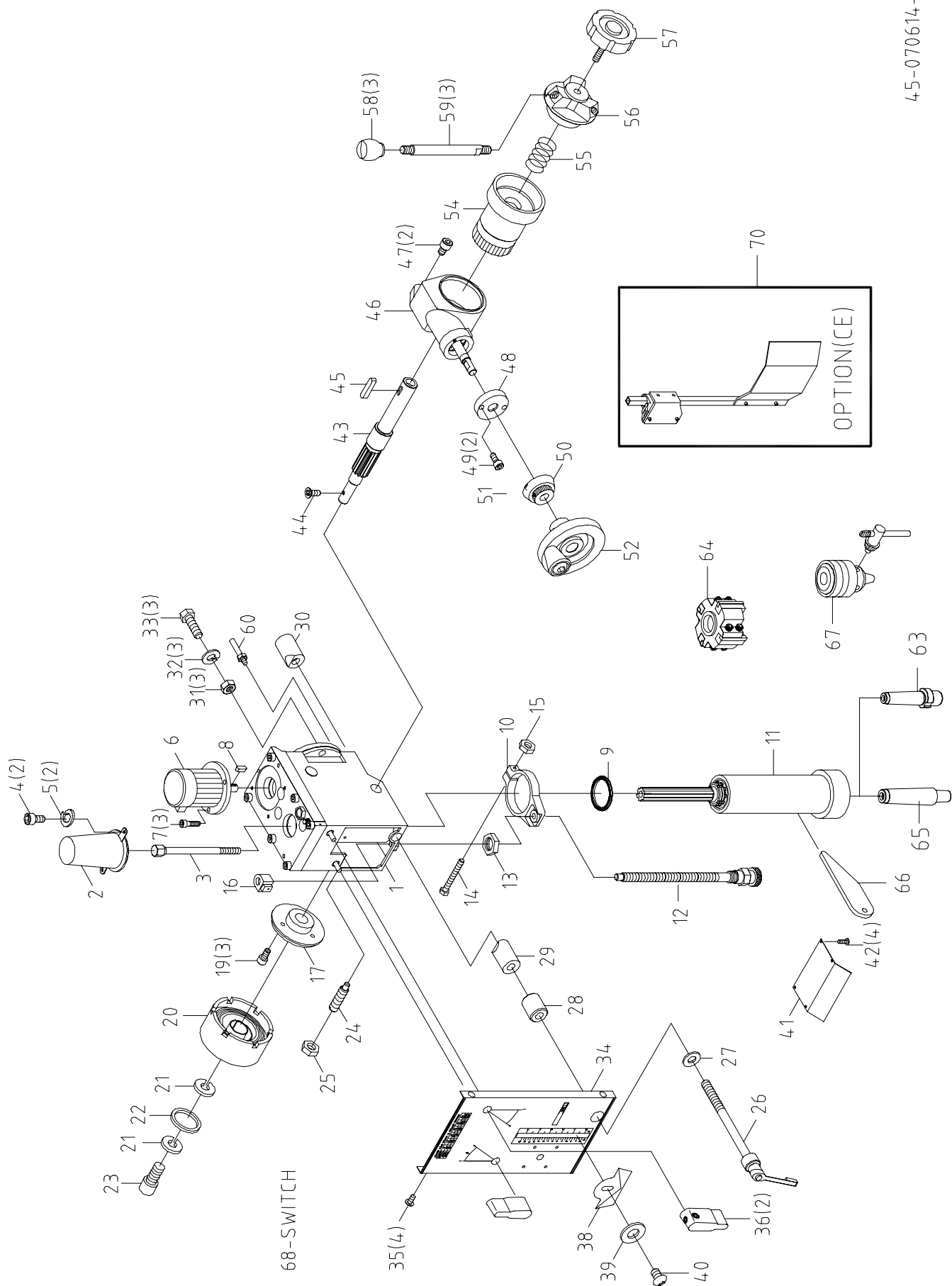


# **GEARED HEAD MILLING & DRILLING MACHINE**

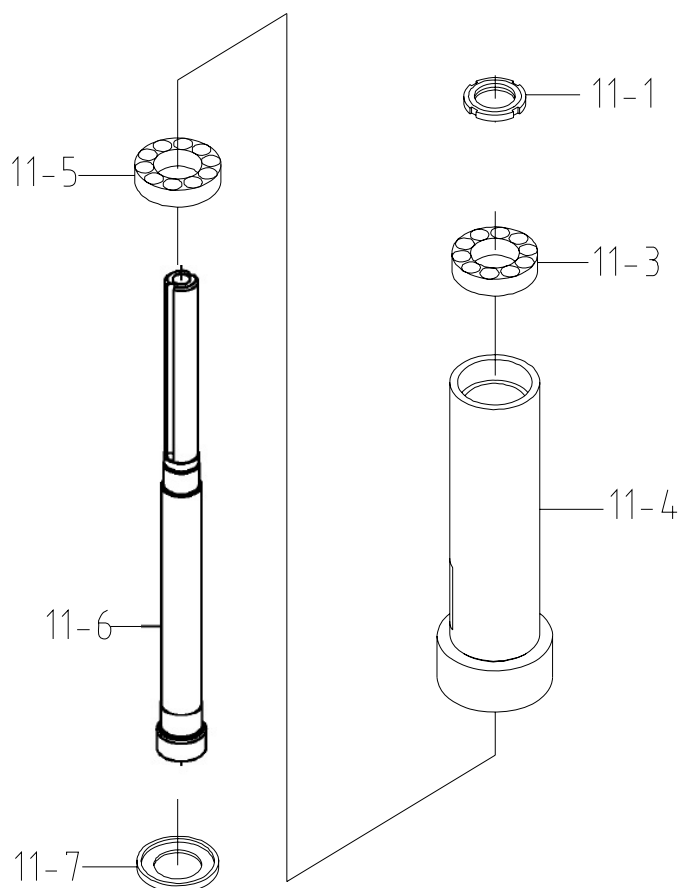
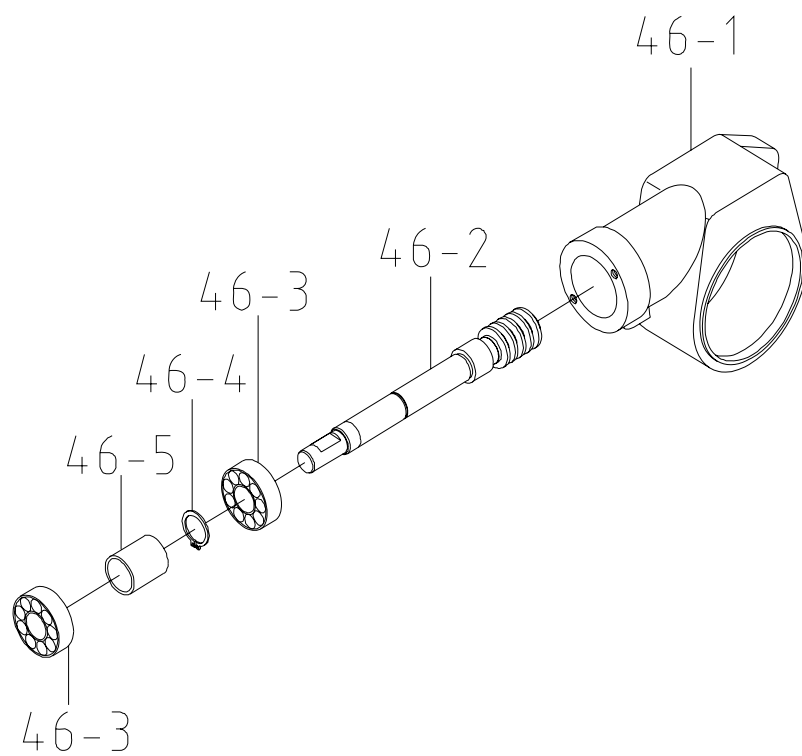


**MODEL RF-45/45N2F  
SPARE PARTS**

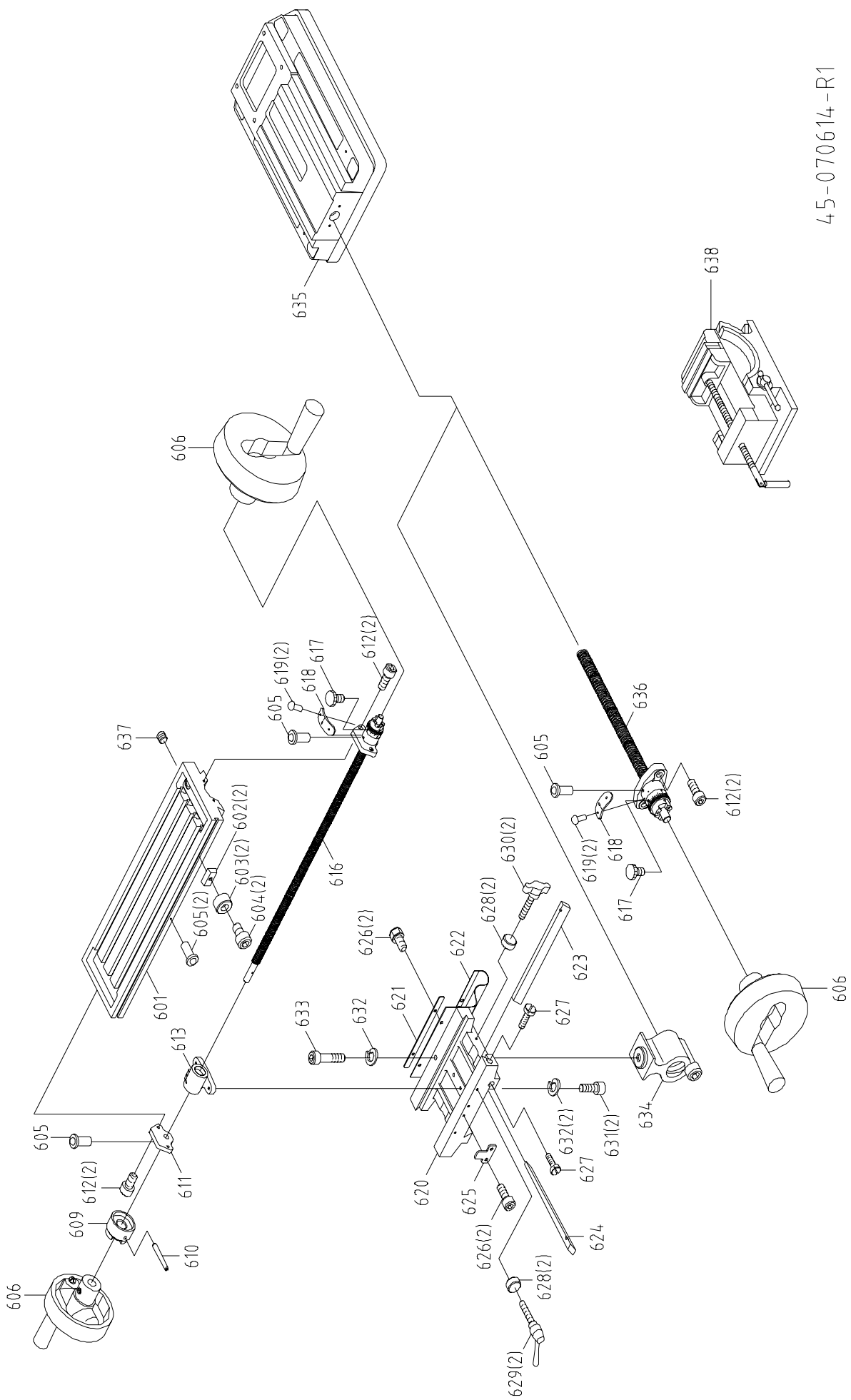
45/45N2F-10507113-R4



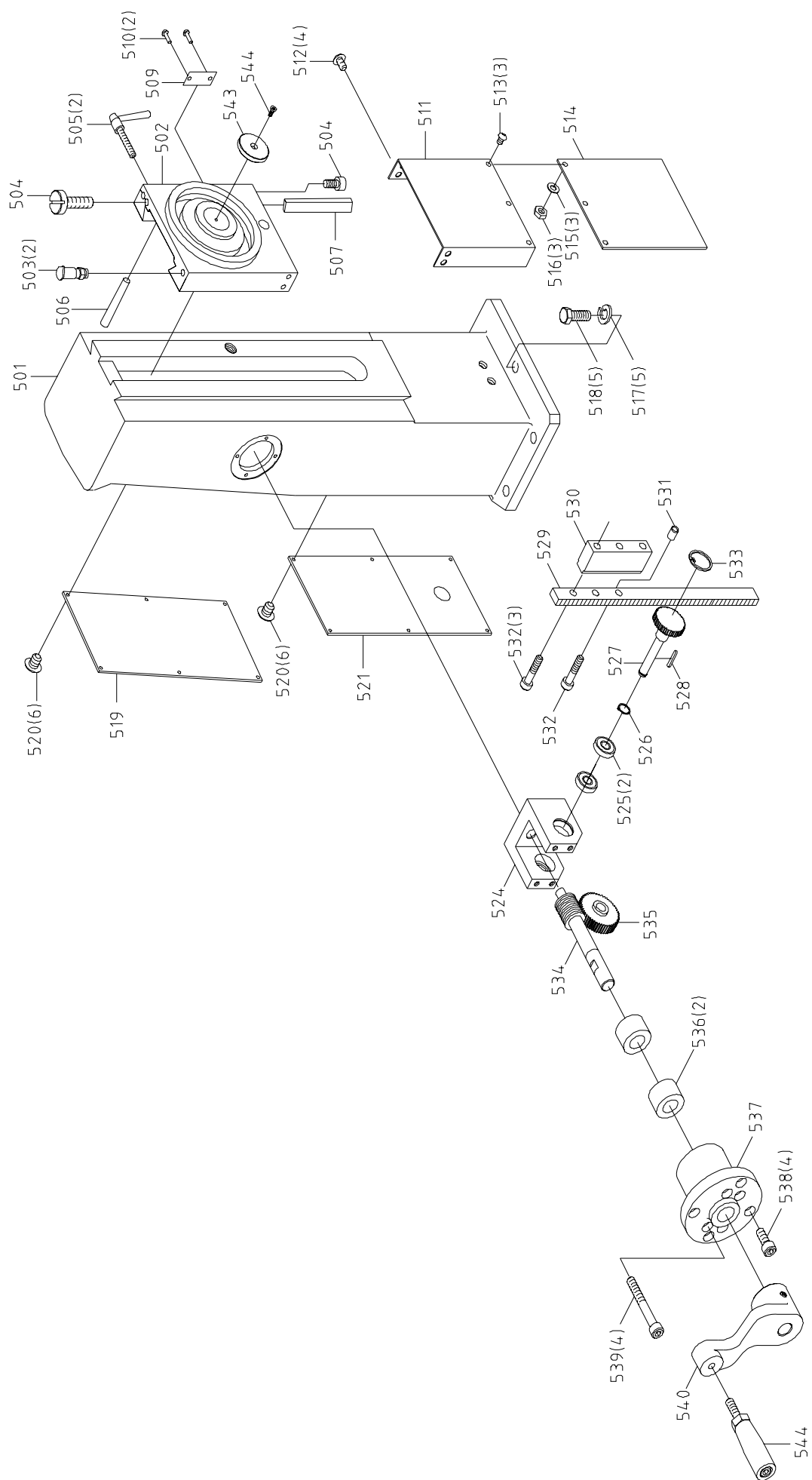
45-070614-R1

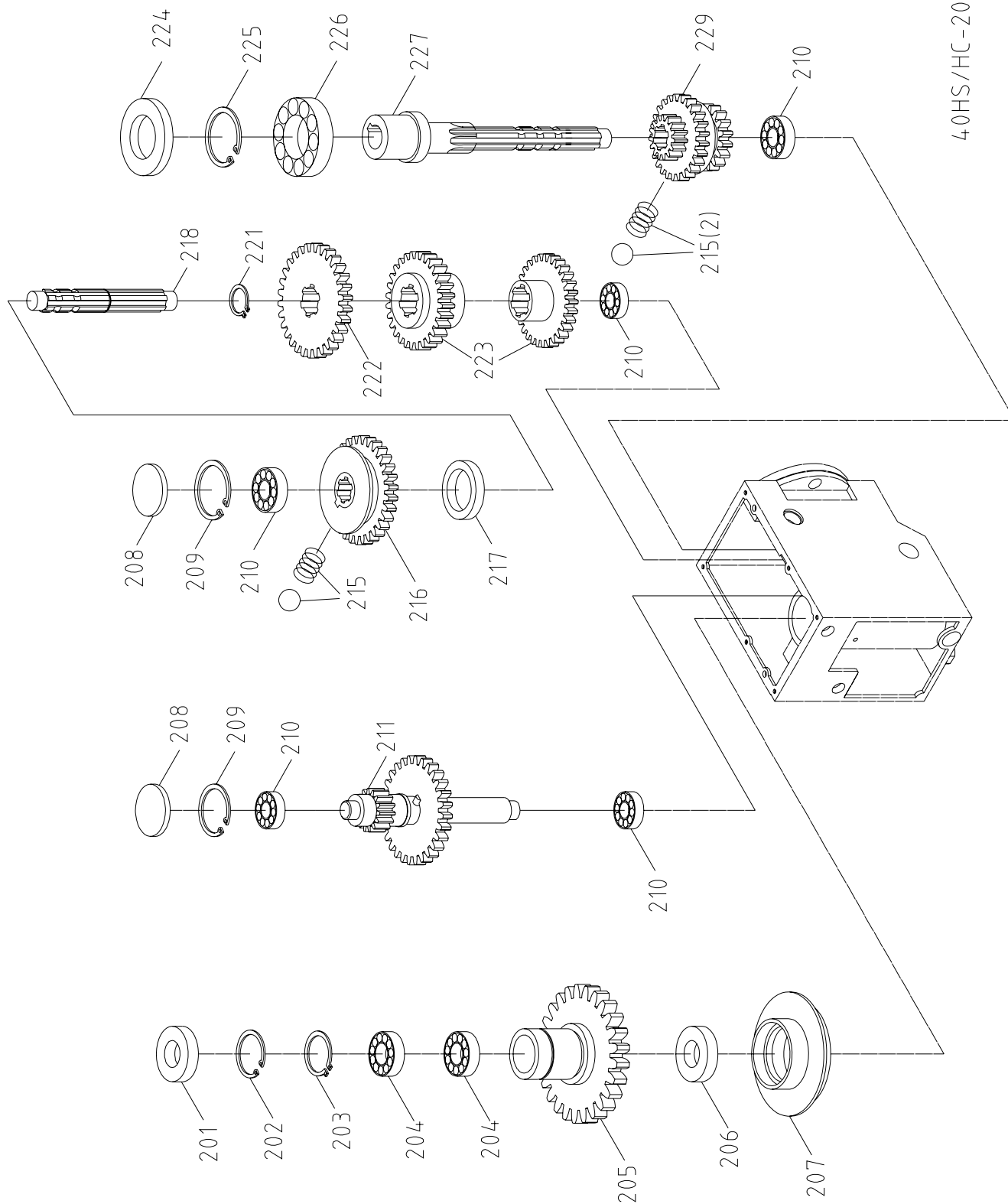


45-070614-R1

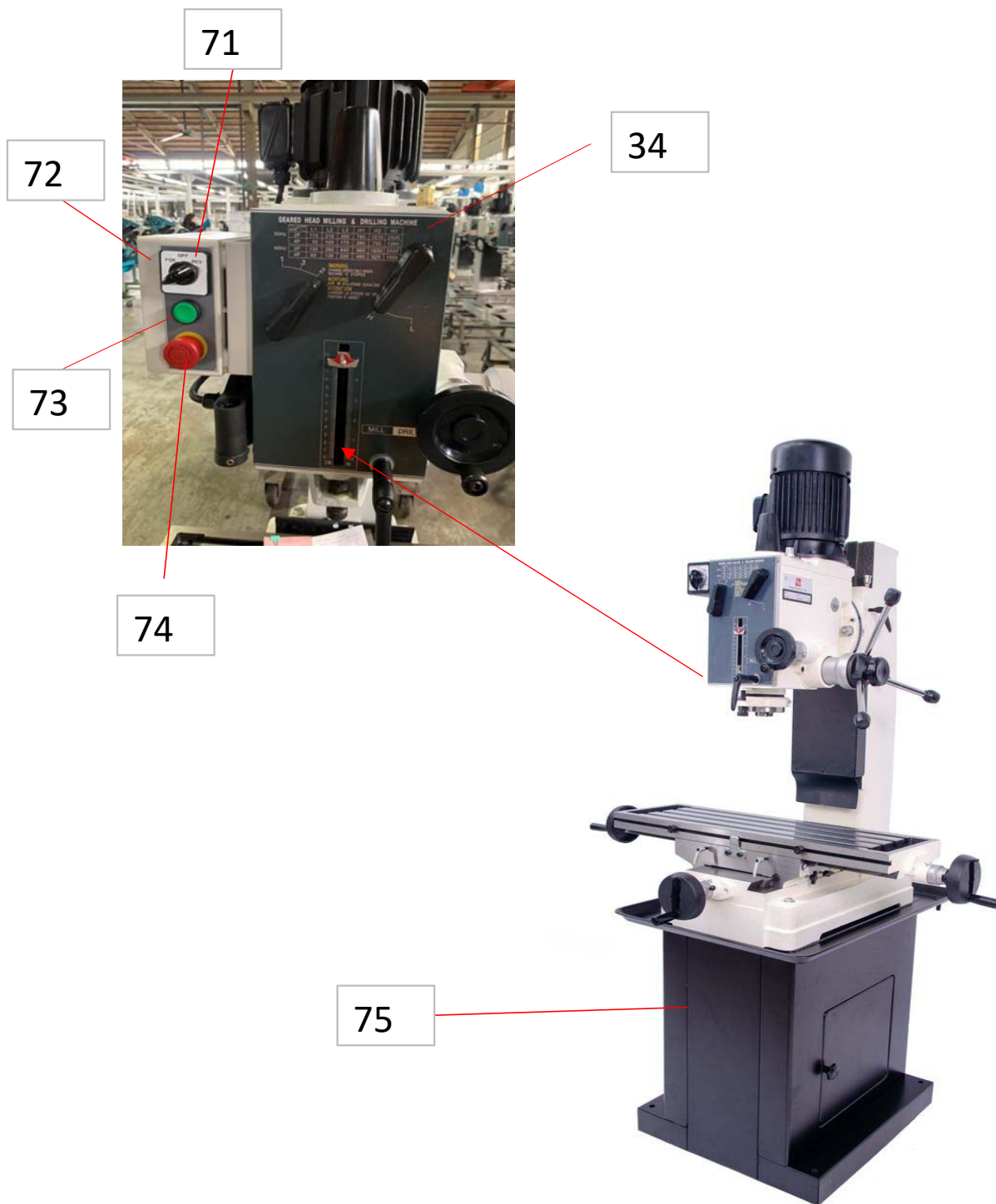


45-070614-R1





40HS/HC-2007.10.25-R0



## PARTS LIST

MODEL NO.: RF-45

CODE NO	PART NO	DESCRIPTION	SPECIFICATION	QTY	NOTE
1	2401011S	Head Body Set		1	
2	2401001-2	Main Shaft Cover		1	
3	6101	Chuck Arbor Bolt	MT3 M10xP1.5	1	
4	HE510	Cross Round Head Screw	M4x0.7Px10L	2	For CE Only
5	HW102	Spring Washer	M4	2	For CE Only
6	M4037C-E2	Motor	IE2 (400V)	1	
7	S409	Hex. Socket Head Screw	3/8"-16UNCx1"L	3	
8	HK027	Key	6x6x30L	1	
9	6112	Rubber Flange		1	
10	6513	Feed Base		1	
11	6116-3MS	Pinion Asbly	MT3	1	Dual Keyway
11-1	6114A	Locknuts		1	Dual Keyway
11-3	CA30206J	Taper Roller Bearing	E30206J	1	
11-4	6116-2	Rack Sleeve	MT3	1	
11-5	CA30207J	Taper Roller Bearing	30207J	1	
11-6	6117H	Spindle Shaft	MT3	1	Dual Keyway
11-7	6119	Bearing Cap	MT3\MT4\R8	1	
12	6554S	Graduated Rod Set		1	
13	6193	Hex. Socket Headless Screw		1	
14	S008	Hex. Head Screw	1/4"x2"L	1	
15	N003	Hex. Nut	1/4"	1	
16	2401197	Position Set Bracket		1	
17	61105S	Spring Base Set		1	
19	S732	Cross Round Head Screw	3/16"x3/4"L	3	
20	61103S	Spring Cover Set		1	
21	W202	Spring Washer	1/4"x1"x1.5t	2	
22	W003	Washer	1/4"	1	
23	6185	Plum Screw		1	
23	S471	Hex. Socket Head Screw	1/4"x5/8L	1	
24	6127	Screw Key	3/8"-16UNC-38L	1	
25	N005	Hex. Nut	3/8"	1	
26	2421003	Handle Rod		1	
27	W002	Washer	1/2"x7/8"x2t	1	
28	6125-2	Fixed Tight Collar		1	
29	6125-1	Fixed Tight Collar		1	
30	6126A	Fixed Tight Collar		1	
31	HB809	Nut	5/8"-11UNC	3	
32	W019	Washer	5/8"x25×t1	3	
33	2402056	Fixed Bolt		3	
34	NM411999E7	Panel Plate	45 use	1	
35	S708	Cross Round Head Screw	3/16"-24UNCx3/8"L	4	
36	2401075S	Speed Lever Set		2	
38	61102	Limit Plate		1	
39	W032	Washer	1/8"	1	
40	S705	Cross Round Head Screw	1/8"x1/4"L	1	
41	2450069	Dust Plate		1	
42	S708	Cross Round Head Screw	3/16"-24UNCx3/8"L	4	
43	2401106	Pinion Shaft		1	
44	S307	Flat Cross Head Screw	3/16"x1/2"L	1	
45	HK042	Key	7x7x20L	1	
46	61108S	Bearing Cover Set		1	
46-1	61108	Bearing Cover		1	
46-2	6147	Worm Shaft		1	
46-3	CA6202ZZ	Ball Bearing	6202ZZ	2	
46-4	HCS04	C-Retaniner Ring	S15	1	
46-5	6135	Washer	§ 34x § 27.5x30L	1	
47	S419	Hex. Socket Head Screw	5/16"x3/4"L	2	
48	6145	Worm Cover		1	
49	S732	Cross Round Head Screw	3/16"x3/4"L	2	
50	6144S	Micro Adjusting Indicator Set	Metric	1	
52	6142-2AS	Handwheel Assembly		1	



**PARTS LIST**

**MODEL NO.: RF-45**

<b>CODE NO</b>	<b>PART NO</b>	<b>DESCRIPTION</b>	<b>SPECIFICATION</b>	<b>QTY</b>	<b>NOTE</b>
54	61107	Worm Gear		1	
55	61115	Spring		1	
56	61110	Handle Base		1	
57	6138	Blade Adjustable Knob		1	
58	290086	Plastic Round Knob		3	
59	6139	Knob W/Shaft		3	
60	HP309S	Miter Pin Set		1	
63	6120-1	Cutter Arbor	MT3 M12xP1.75 (25.4)	1	Optional
63	6120-3	Cutter Arbor	MT3 W1/2"-12 (25.4)	1	Optional
63	6120-4	Cutter Arbor	R8 W7/16"-20 (25.4)	1	Optional
64	6186	Milling Cutter	§ 25.4	1	Optional
64	6186A	Milling Cutter	§ 25.4	1	Optional
65	6121	Chuck Arbor	MT3 M10xP1.5(JT6)	1	
66	6168	Punch Key	MT3 use	1	
67	6187	Chuck	JT6	1	Optional
70	61194AS-1	Chuck Guard Assembly	Optional	1	For CE Only
71	ET1729	Positive And Negative Switch		1	
72	ET1927	Control Panel Box	Grey	1	
73	ET1216	Power Switch	Green	1	
74	ET1245	Emergency Stop Button		1	For CE Only
75	2423019S-2	Stand	Blue	1	
75	2423019S-1	Stand	Black	1	Optional
601	6628-1	Table	31L/40/45	1	
602	6229	Fixed Block		2	
603	6230	Movable Fixed Ring		2	
604	S402	Hex. Socket Head Screw	1/4"x1/2"L	2	
605	HB111	Oil Ball	1/4"	5	
606	6601CS	Table Handle Wheel		3	
609	6620	Table Clutch	§ 17	1	
610	HP048	Pin	§ 5x40L	1	
611	6222	Left Flange	§ 17	1	
612	S414	Hex. Socket Head Screw	5/16"x1"L	6	
613	6223S	Table Nut Set	31/31L Metric	1	
616	6224-2S	Table Screw Assembly	31L Metric	1	
617	6602-3	Link Screw		2	
618	61121	Limit Plate		2	
619	HH001	Rivet	§ 2	4	
620	6616-1	Center Base	31L	1	
621	6217	Antidust Plate		1	
622	6218S	Antidust Plate		1	
623	6627-1	Gib Strip	31L	1	
624	6607	Gib Strip		1	
625	6214	Movable Fixed Block		1	
626	S018	Hex. Socket Head Screw	5/16"x1/2"L	4	
627	6212	Gib Strip Bolt		2	
628	6630	Bushing		4	
628	6213-1	Grip		2	
629	6151-1	T Screw		2	
630	6213	Thumb Screw		2	
631	S414	Hex. Socket Head Screw	5/16"x1"L	2	
632	W205	Spring Washer	5/16"	3	
633	S417	Hex. Socket Head Screw	5/16"x2-1/2"L	1	
634	6215S	Acme Nut Assembly	Metric	1	
635	2423001LS	Swivel Base		1	
636	2402005S	Acme Screw Assembly	Metric	1	
638	6241A	Vise		1	Optional

## PARTS LIST

MODEL NO.: RF-45

CODE NO	PART NO	DESCRIPTION	SPECIFICATION	QTY	NOTE
501	2422001	Vertical Square Column		1	
502	2422016	Headstock Swivel Base		1	
503	HB14	Oil Bowl	PT1/8"	2	
504	6212	Adjustable Screw		2	
505	2422029	Grip		2	
506	2401080	Miter Pin	M6x50L(1:48)	1	
507	2422046	Gib Strip Bolt		1	
509	2424013	Index		1	
510	HH001	Rivet	§ 2-5L	2	
511	2422021	Antidust Plate		1	
512	HE506B	Cross Round Head Screw	M5x10L	4	
513	HS562	Cross Round Head Screw	M4x8L	3	
514	2422033	Antidust Plate		1	
515	HW003	Washer	M5	3	
515	2422032	Press Board		1	
516	HN004	Hex. Nut	M5	3	
517	HW109	Spring Washer	M20	5	
517	W206	Spring Washer	5/8"	5	
518	HS149	Hex. Head Screw	M20x60L	5	
518	S089	Hex. Head Screw	5/8"x2-1/2"L	5	
519	2422018	Steel Plate		1	
520	HE506B	Cross Round Head Screw	M5x10L	12	
521	2422019	Steel Plate		1	
524	2422027	Bracket		1	
525	CA6003ZZ	Bearing	6003ZZ	2	
526	HCS06	C-Retaniner Ring	S17	1	
527	2422028	Gear Shaft		1	
528	HK105	Key	5x5x28L	1	
529	2422023	Rack		1	
530	2422035	Bushing		1	
531	2422036	Bushing		1	
532	HS291	Hex. Socket Head Screw	M12x85L	4	
533	HCR04	C-Retaniner Ring	R35	1	
534	2422024	Worm Shaft		1	
535	2422026	Worm Gear		1	
536	2422030	Bearing		2	
537	2422025	Support Flange		1	
538	HS243	Hex. Socket Head Screw	M8x25L	4	
539	HS250	Hex. Socket Head Screw	M8x60L	4	
540	6158S	Head Handle Set		1	
542	6027-1S	Clamp Handle		1	
543	2422045	Slide Base Flange		1	
544	HD511	Hex. Socket Flat Head Scwew		1	
550	HS289	Hex. Socket Head Screw	M12x75L	1	
551	HS282	Hex. Socket Head Screw	M12x40L	1	
201	HG005	Oil Seal	§ 40x § 68x8t	1	
202	HCR09	C-Retaniner Ring	R68	1	
203	HCS23	C-Retaniner Ring	S40	1	
204	CA6008ZZ	Ball Bearing	6008ZZ	2	
205	2401006F	Gear	2-slot	1	Dual Keyway
206	HG003	Oil Seal	§ 35x § 45x8t	1	
207	2401008	Oil Seal Ring		1	
208	HB302	Dust Cover	§ 35	2	
209	HCR04	C-Retainer ring	R35	2	
210	CAF6202ZZ	Ball Bearing	6202ZZ	5	
211	2401020S	Gear Shaft		1	
215	HB002	Steel Ball/Spring	§ 5/16" , § 0.8x7L	3	
216	2401029S	Gear Set		1	
217	2401192A	Bushing		1	
218	2401031B	Gear Shaft		1	
219	HK014	Key	5x5x50L	1	

**PARTS LIST****MODEL NO.: RF-45**

<b>CODE NO</b>	<b>PART NO</b>	<b>DESCRIPTION</b>	<b>SPECIFICATION</b>	<b>QTY</b>	<b>NOTE</b>
220	HK036	Key	6x6x75L	1	
221	HCS09	C-Retaniner Ring	S20	1	
222	2401055B	Gear		1	
223	2401037S	Gear Set		1	
224	HG004	Oil Seal	§ 35x § 62x8t	1	
225	HCR08	C-Retaniner Ring	R62	1	
226	CA6007ZZ	Ball Bearing	6007ZZ	1	
227	2401043B	Gear Shaft		1	
228	HK020	Key	5x5x80L	1	
229	2401049S	Gear Set		1	

**Contimac GMT International**  
**Address: Z5, Mollem 440, BE 1730 Asse,**  
**Belgium**  
**Tel.: +32(0)2 454.0.454**  
**Website: [www.contimacgmt.be](http://www.contimacgmt.be)**

**MANUFACTURER:**

**ADDRESS:**

**SERIAL No.:**

PLEASE WRITE DOWN THE SERIAL NO. ON THIS BLOCK FROM THE NAME  
PLATE AFTER YOU RECEIVE THIS MACHINE.