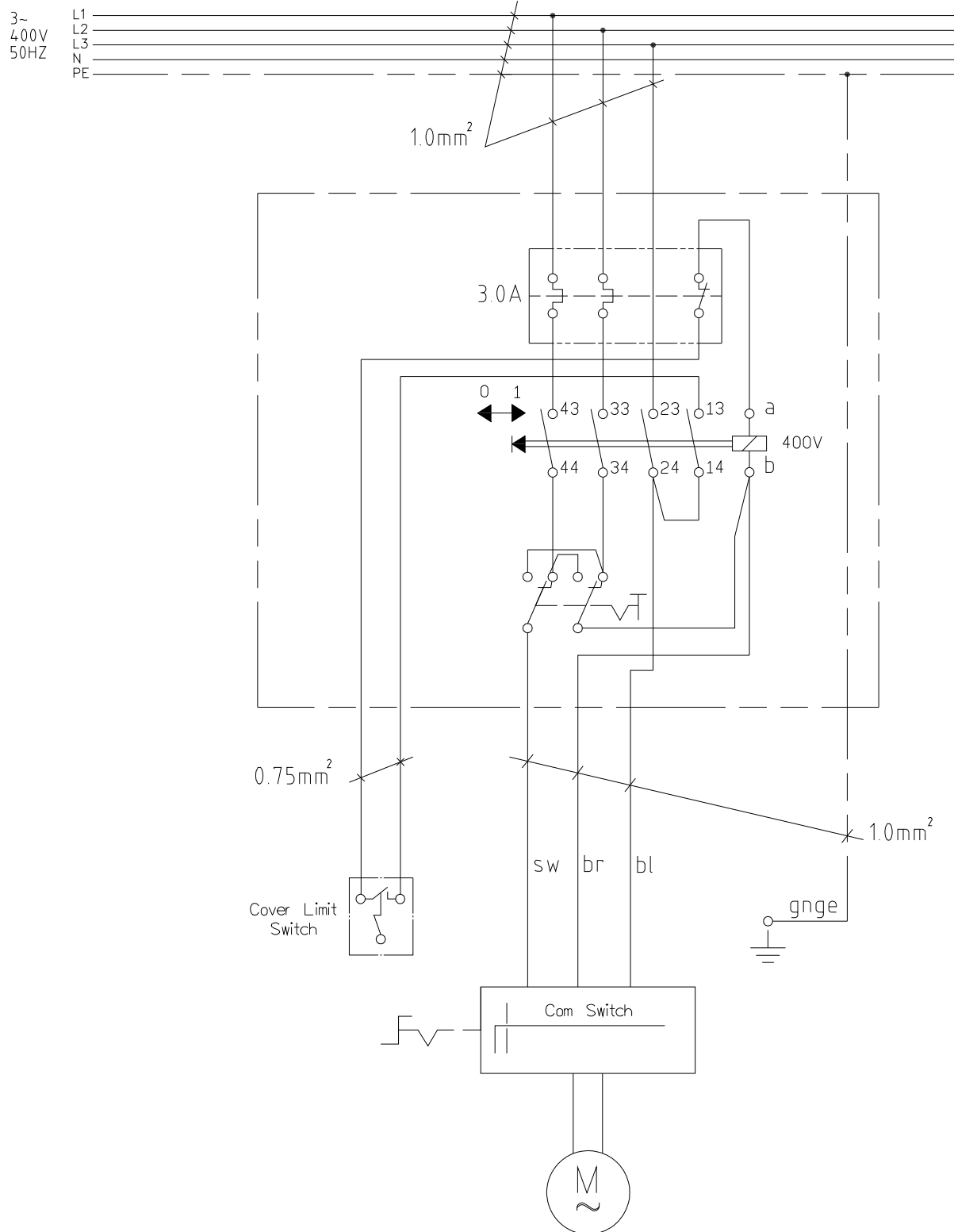


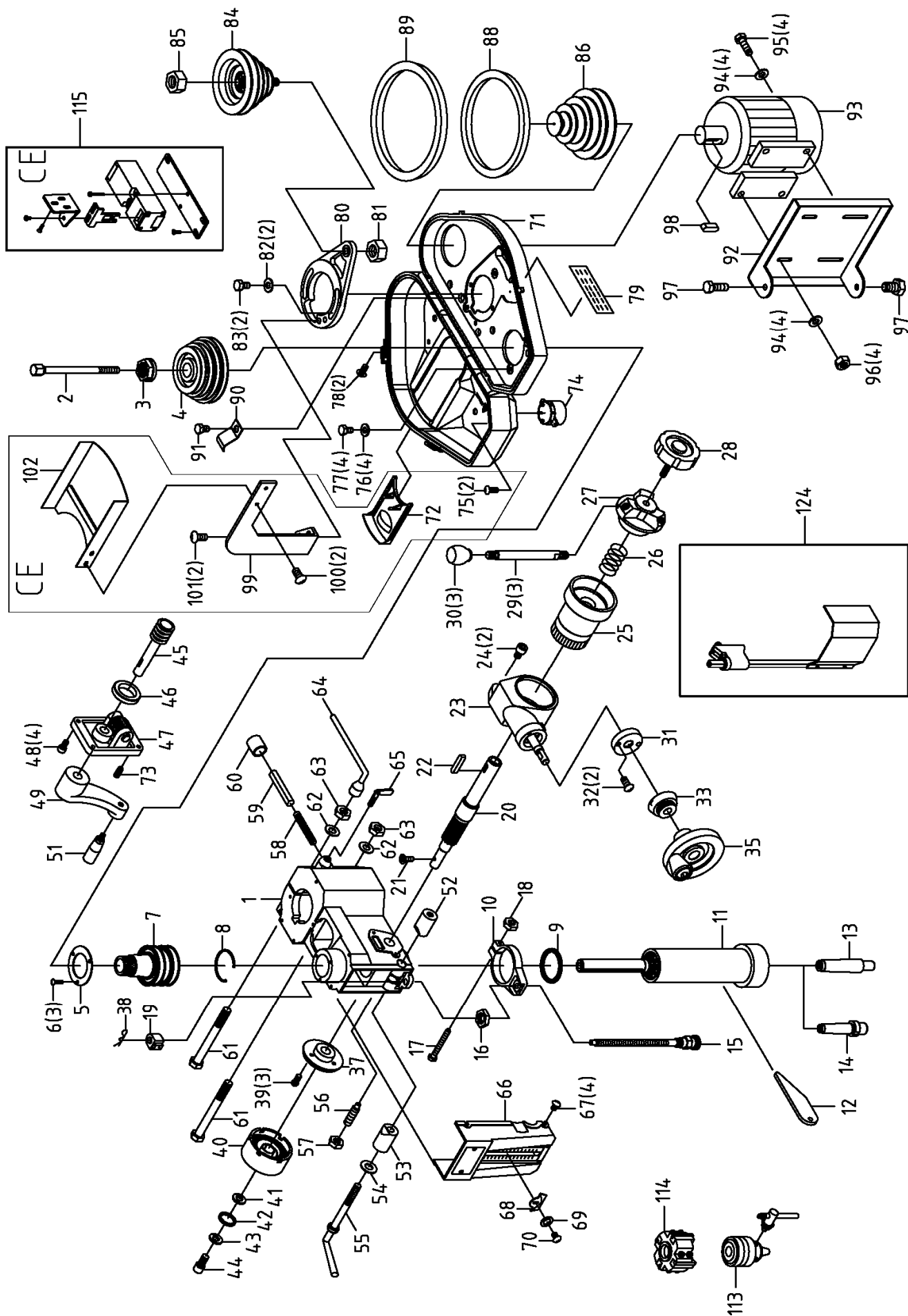
MILLING DRILLING MACHINE

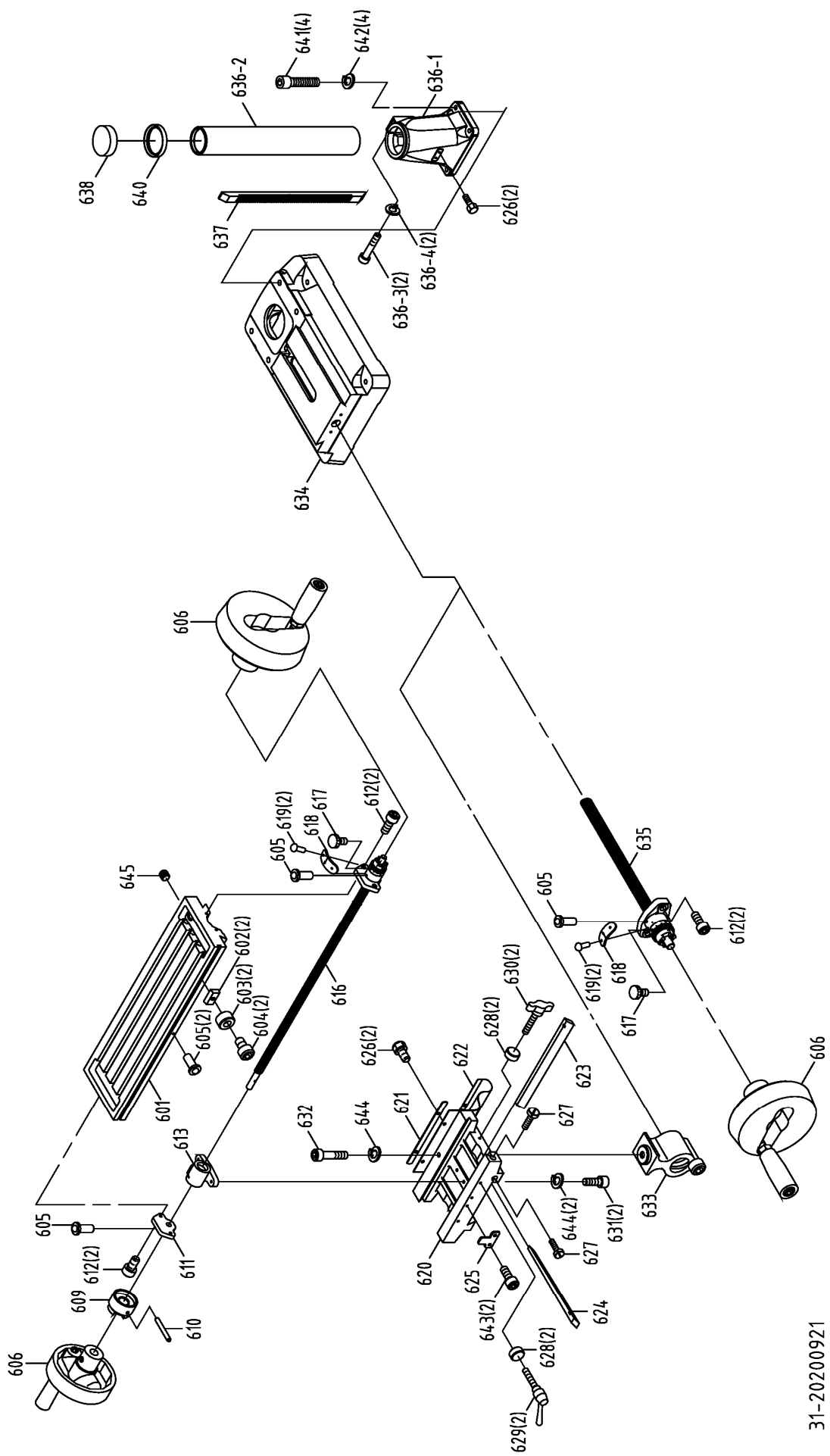


MODEL RF-31 SPARE PARTS

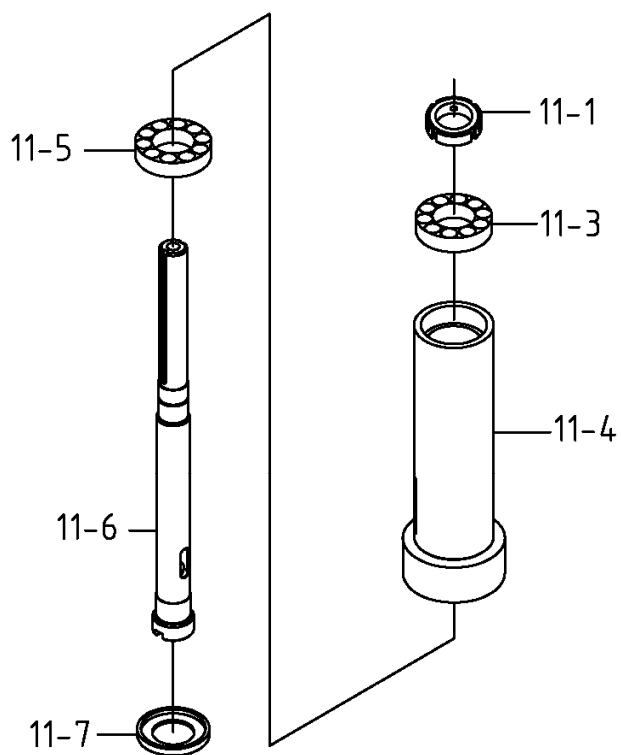
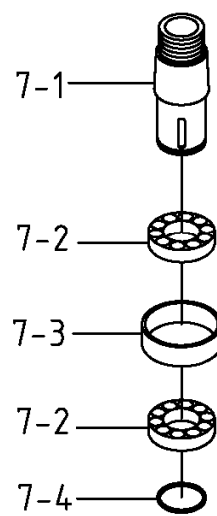
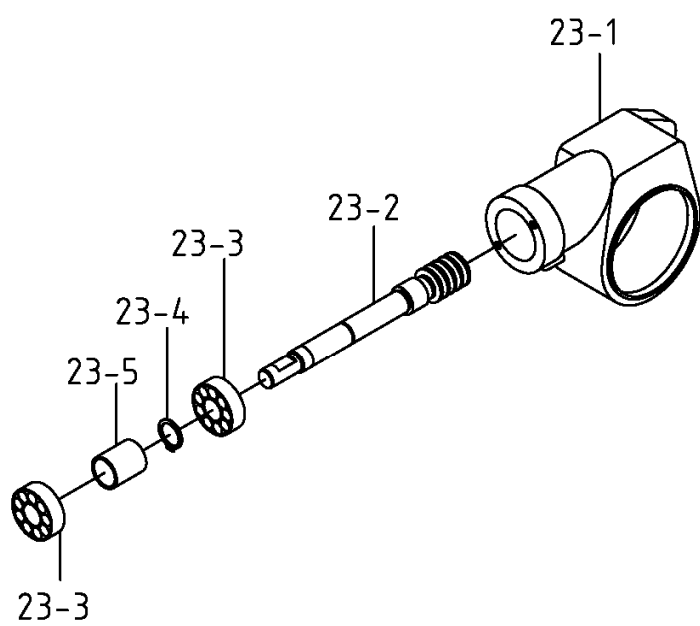
CIRCUIT DIAGRAM

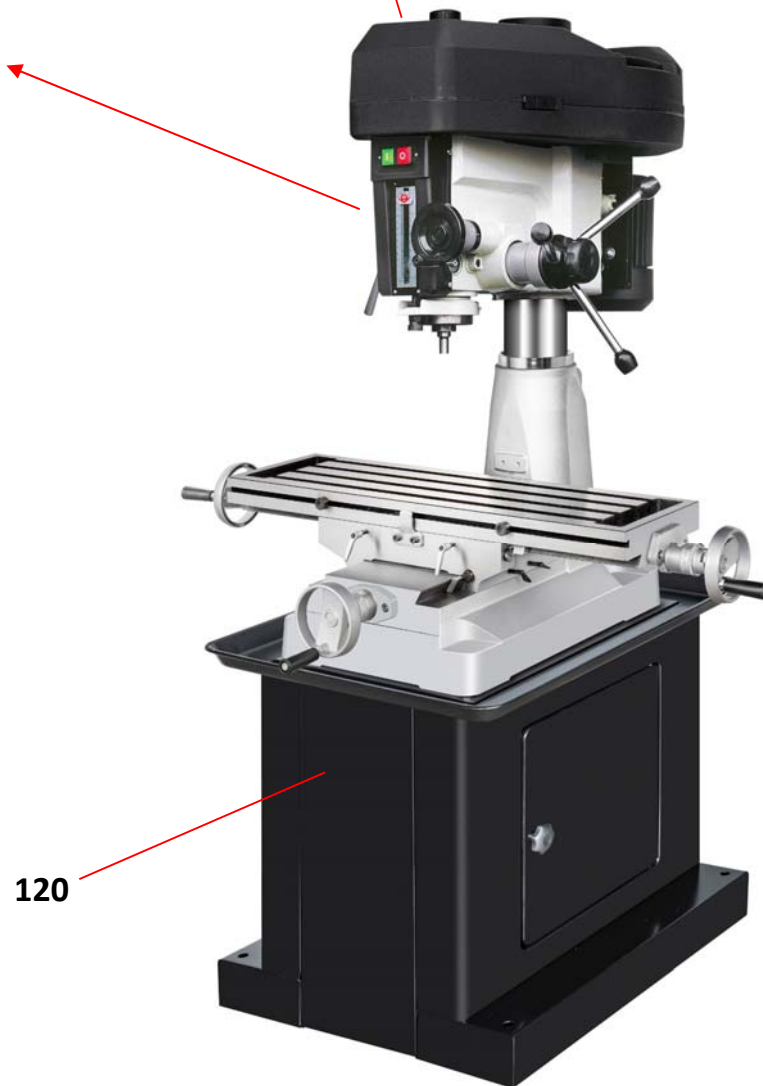






31-20200921





PARTS LIST

MODEL NO.: RF-31

CODE NO	PART NO	DESCRIPTION	SPECIFICATION	QTY	NOTE
1	6511	Head Body		1	
2	6101	Chuck Arbor Bolt	MT3 M10xP1.5	1	
3	6102B	Spindle Locknut		1	
4	6103A	Spindle Pulley		1	
5	6105	Outer Bearing Plate	§ 105x66x2.5t	1	
6	S701	Cross Round Head Screw	1/4"x1/2"L	3	
7	6106CS	Spindle Taper Sleeve Assembly	Dual Keyway	1	
7-1	6106C	Spindle Taper Sleeve	Dual Keyway	1	
7-2	CA6009ZZ	Ball Bearing (6009ZZ)	6009ZZ	2	
7-3	6108	Washer	§ 74x § 68x22	1	
7-4	6123	Fixed Ring	§ 2x § 41	1	
8	6109	C-Retainer Ring	§ 3x § 80	1	
9	6112	Rubber Flange		1	
10	6513	Feed Base		1	
11	6116-3MS	Pinion Assembly	MT3	1	
11-1	6114A	Locknuts		1	
11-3	CA30206J	Taper Roller Bearing	E30206J	1	
11-4	6116-2	Rack Sleeve	MT3	1	
11-5	CA30207J	Taper Roller Bearing	30207J	1	
11-6	6117H	Spindle Shaft	MT3	1	
11-7	6119	Bearing Cap	MT3R8	1	
12	6168	Punch Key		1	
13	6121	Chuck Arbor	MT3 M10xP1.5 (JT6)	1	
13	6121-1	Chuck Arbor	MT3 M12xP1.75 (JT6)	1	OPTIONS
13	Apr-21	Chuck Arbor	R8 W7/16"-20 (JT6)	1	OPTIONS
13	6121-7	Chuck Arbor	MT3 M12xP1.75 (B16)	1	OPTIONS
13	6121-10	Chuck Arbor	MT3 M10xP1.5 (B16)	1	OPTIONS
14	6120	Cutter Arbor	MT3 M10xP1.5 (§ 25.4)	1	
14	6120-1	Cutter Arbor	MT3 M12xP1.75 (§ 25.4)	1	OPTIONS
14	6120-4	Cutter Arbor	R8 W7/16"-20 (§ 25.4)	1	OPTIONS
15	6554S	Graduated Rod Assembly		1	
16	6193	Nut		1	
17	S008	Hex. Head Screw	1/4"x2"L	1	
18	N003	Hex. Nut	1/4"	1	
19	6192	Position Set Bracket		1	
20	61106	Pinion Shaft		1	
21	S307	Flat Cross Head Screw	3/16"x1/2"L	1	
22	HK042	Key	7x7x20L	1	

PARTS LIST

MODEL NO.: RF-31

CODE NO	PART NO	DESCRIPTION	SPECIFICATION	QTY	NOTE
23	61108S	Feed Cover Assembly		1	
23-1	61108	Bearing Cover		1	
23-2	6147	Worm Shaft		1	
23-3	CA6202ZZ	Ball Bearing (6202ZZ)	6202ZZ	2	
23-4	HCS04	C-Retainer Ring	5/16"	1	
23-5	6135	Washer	5/16" x 3/4" x 30L	1	
24	S419	Hex. Socket Head Screw	5/16" x 3/4" L	2	
25	61107	Worm Gear		1	
26	61115	Spring		1	
27	61110	Handle Base		1	
28	6138	Blade Adjustable Knob		1	
29	6139	Knob W/Shaft		3	
30	290086	Plastic Round Knob		3	
31	6145	Worm Cover		1	
32	S407	Cross Round Head Screw	3/16" x 3/8" L	2	
33	6144	Micro Adjusting Indicator Set	Metric	1	
35	6142-2AS	Handwheel Assembly		1	
37	61105S	Spring Base Set		1	
38	HP243	Split Pin	SSP5	1	
39	S732	Cross Round Head Screw	3/16" x 3/4" L	3	
40	61103S	Spring Cover Asbly		1	
41	W202	Spring Washer	1/4" x 1" x 1.5t	1	
42	W005	Washer	1/4"	1	
43	W202	Spring Washer	1/4" x 1" x 1.5t	1	
44	S471	Hex. Socket Head Screw	1/4" x 5/8L	1	
45	6559	Worm Shaft		1	
46	61114	Bushing		1	
47	61101S	Head Raise Bracket Asbly		1	
48	S404	Hex. Socket Head Screw	1/4" x 3/4" L	4	
49	6158S	Head Handle Set		1	
51	6027-1S	Clamp Handle		1	
52	6126A	Fixed Tight Collar		1	
53	6125A	Fixed Tight Collar		1	
54	W002	Washer	1/2" x 7/8" x 2t	1	
55	6124	Handle Rod		1	
56	6127	Screw Key	3/8"-16UNC-38L	1	
57	N005	Hex. Nut	3/8"	1	
58	6162	Spring		1	
59	6563	Pin		1	
60	6179	Rubber Collar		1	
61	6552	Head Body Fix Bolt	5/8"-150L	2	
62	W019	Washer	5/8" x 1-9/16" x 3t	2	
63	N008	Hex. Nut	5/8"	2	

PARTS LIST

MODEL NO.: RF-31

CODE NO	PART NO	DESCRIPTION	SPECIFICATION	QTY	NOTE
64	6550	Lock Handle		1	
65	6151	Thumb Screw	3/8"-16UNC	1	
65	6151B	Blade Adjustable Knob	3/8"-16UNC x30L	1	OPTIONS
66	6196S	Front Cover Plate Asbly		1	
67	S701	Cross Round Head Screw	1/4"x1/2"L	4	
68	61102	Limit Plate		1	
69	W032	Washer	1/8"	1	
70	S705	Cross Round Head Screw	1/8"x1/4"L	1	
71	6169E	Belt Cover	Palley Cover	1	
72	6169-3	Shelf		1	
74	6169B	Spindle Cover	Palley Cover	1	
75	HS801	Screw	3mm	2	
76	W017	Washer	5/16"	4	
77	S022	Hex. Head Screw	5/16"-18x3/4"L	4	
78	S701	Cross Round Head Screw	1/4"x1/2"L	2	FOR CE ONLY
79	6557	Speed Chart		1	
80	6576B	Speed Change Inter Pulley Base		1	
81	N008	Hex. Nut	5/8"	1	
82	W016	Washer	5/16"x28x3t	2	
83	S019	Hex. Head Screw	5/16"x1-1/2"L	2	
84	6173AS	Inter Pulley Asbly		1	
85	N008	Hex. Nut	5/8"	1	
86	6170DS	Motor Pulley Set		1	
88	BB034	V-Belt	B-34	1	
89	BB042	V-Belt	B-42	1	
90	6577	Wire Relief Retainer		1	
91	S017	Hex. Head Screw	5/16"-18x1"L	1	
92	6566	Motor Mount Plate		1	
93	MM217C	Motor	1.5HP/230V/50HZ/1PH	1	
94	W017	Washer	5/16"	8	
95	S017	Hex. Head Screw	5/16"x1"L	4	
96	N007	Hex. Nut	5/16"	4	
97	S025	Hex. Head Screw	7/16"x3/4"L	2	
98	HK115	Key	8x7x45L	1	
99	6169G	Guard Bracket		1	FOR CE ONLY
100	HS519	Cross Round Head Screw	M5x8L	2	FOR CE ONLY
101	HS527	Cross Round Head Screw	M6x12L	2	FOR CE ONLY
102	6169F	Protective Plate		1	FOR CE ONLY
113	6187	Chuck	1/2"-JT6	1	STANDARD
114	6186A	Milling Cutter	\$ 25.4	1	NOT INCLUDE
115	6638S	Micro Switch Bracket Set		1	FOR CE ONLY

PARTS LIST

MODEL NO.: RF-31

CODE NO	PART NO	DESCRIPTION	SPECIFICATION	QTY	NOTE
116	ET1216	Power Switch	Green	1	
117	ET1245	Emergency Stop Button		1	FOR CE ONLY
118	ET1728	Positive And Negative Switch		1	
119	ET1927	Control Panel Box	Grey	1	
120	2423019S-2	Stand	Blue	1	
120	2423019S-1	Stand	Black	1	OPTIONS
121	ET1616	Belt Cover Limit Switch		1	FOR CE ONLY
124	670065-1S	Chuck Guard Assembly		1	FOR CE ONLY
125	ET1616	Limit Switch	Belt Cover Use	1	FOR CE ONLY
601	6628	Table	730x210mm	1	
602	6229	Fixed Block		2	
603	6230	Movable Fixed Ring		2	
604	S402	Hex. Socket Head Screw	1/4"x1/2"L	2	
605	HB111	Ball Oiler	1/4"	5	
606	6601CS	Table Handle Wheel Set		3	
609	6620	Table Clutch	\$ 17	1	
610	HP048	Cotter Pin	\$ 5x40L	1	
611	6222	Left Flange	\$ 17	1	
612	S414	Hex. Socket Head Screw	5/16"x1"L	6	
613	6223-1S	Table Nut Set	Inch	1	
616	6224-1S	Table Screw Assembly	Inch	1	
617	6602-3	Link Screw		2	
618	61121	Limit Plate		2	
619	HH001	Rivet	\$ 2	4	
620	6616	Center Base	31 use	1	
621	6217	Antidust Plate		1	
622	6218S	Antidust Plate Assembly		1	
623	6627	Gib Strip	31 use	1	
624	6607	Gib Strip		1	
625	6214	Movable Fixed Block		1	
626	S018	Hex. Head Screw	5/16"x1/2"L	4	
627	6212	Gib Strip Bolt		2	
628	6630	Bushing		4	
629	6213-1	Grip		2	
629	6213-2	Grip		2	
630	6151-1	T Screw		2	
630	6213	Thumb Screw		2	
631	S414	Hex. Socket Head Screw	5/16"x1"L	2	
632	S418	Hex. Socket Head Screw	5/16"x2-1/4"L	1	

PARTS LIST

MODEL NO.: RF-31

CODE NO	PART NO	DESCRIPTION	SPECIFICATION	QTY	NOTE
633	6215S	Acme Nut Assembly	Metric	1	
634	6606K	Swivel Base		1	
635	6605S	Acme Screw Assembly	Metric	1	
636-1	670003D	Column Base		1	(2-in-1)
636-2	6608KA	Tube Column	765L , 31 use	1	(2-in-1)
636-3	HS284	Screw	M12x50L	2	
636-4	HW107B	Spring Washer	M12	2	
637	6610	Rack	600.5L , 31 use	1	
638	6611S	Column Head Assembly		1	
640	6609	Column Flange Ring		1	
641	HS117	Hex. Head Screw	M16x60L	4	
642	HW108	Spring Washer	M16	4	
643	S419	Hex. Socket Head Screw	5/16"x3/4"L	2	
644	W205	Spring Washer	5/16"	3	
645	HB902	Plug	PT1/4"	2	
646	6241A	Vise	3"(U TYPE)	1	NOT INCLUDE

Contimac GMT International
Address: Z5, Mollem 440, BE 1730 Asse,
Belgium
Tel.: +32(0)2 454.0.454
Website: www.contimacgmt.be

MANUFACTURER:

ADDRESS:

SERIAL No.:

PLEASE WRITE DOWN THE SERIAL NO. ON THIS BLOCK FROM THE NAME
PLATE AFTER YOU RECEIVE THIS MACHINE.