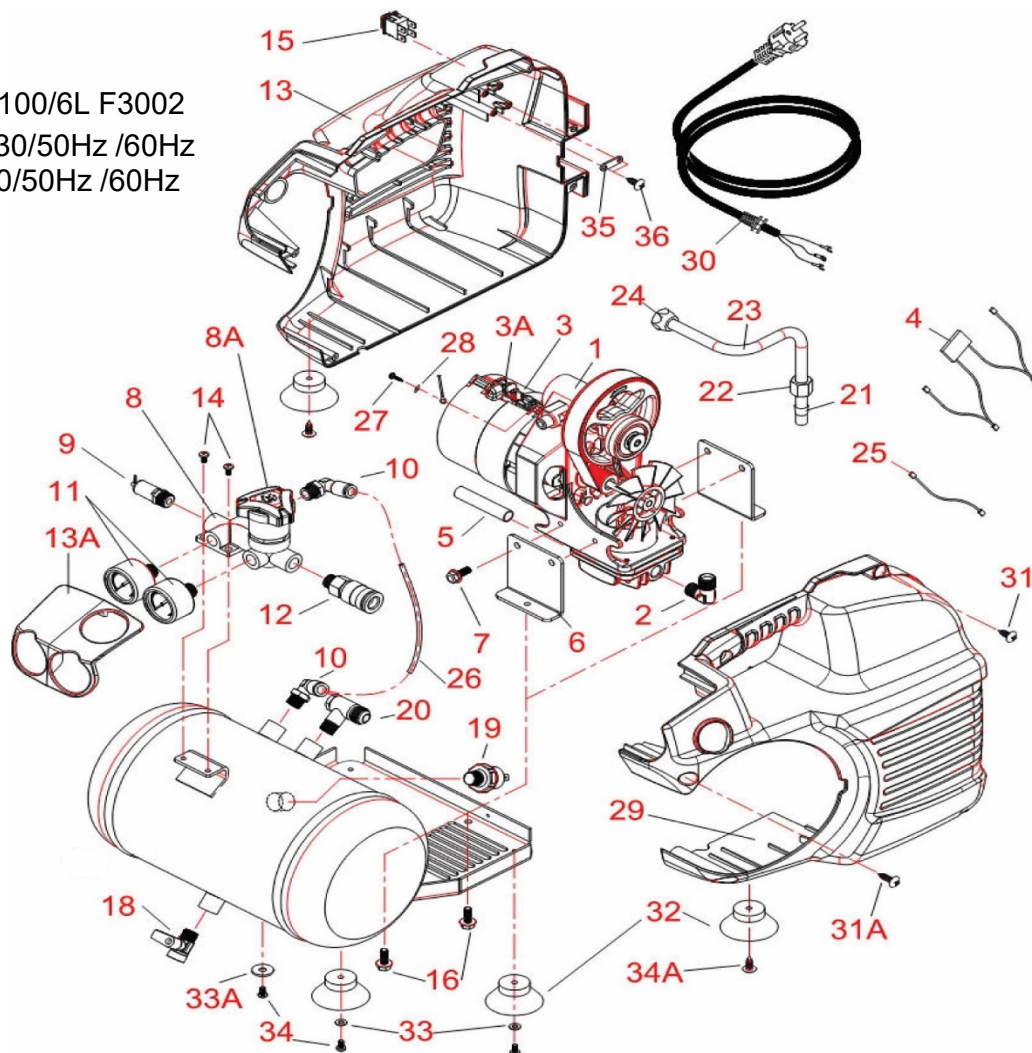


1129102900 Easy 1100/6L F3002
SINGLE PHASE V.230/50Hz /60Hz
MONOFASE V.230/50Hz /60Hz



REF. RIF.	CODE CODICE	QT	DESCRIPTION DESCRIZIONE	REF. RIF.	CODE CODICE	QT	DESCRIPTION DESCRIZIONE
1	1129703709	1	pump unit / gruppo pompante	35	1127310145	1	plastic lock / blocca plastica
2	1129702605	1	"L" joint / raccordo "L"	36	1127010065	2	screw / vite
3	1129701816	2	conveyor / convogliatore				
3A	1127010065	2	screw / vite				
4	1127310067	1	pressure cable / cavo pressione				
5	1129701707	1	rilsan tube / tubo rilsan				
6	1129704343	2	support / supporto				
7	1127010146	4	screw / vite				
8	1129704345	1	pressure reducer / riduttore di pressione				
8A	1129703699	1	black knob / manopola nera				
9	1129700303	1	safety valve / valvola di sicurezza				
10	1127080424	1	"L" joint / raccordo "L"				
11	1127110008	2	pressure gauge / manometro				
12	1129700276	1	quick tap / rubinetto rapido				
13	2234900034	1	black casing / carenatura nera				
13A	2234900035	1	plastic panel (black) / pannello di plastica (nero)				
14	1127010209	2	screw / vite				
15	1127300037	1	main switch / interruttore principale				
16	1129701693	2	screw / vite				
18	1127130009	1	drain tap / rubinetto spurgo				
19	1129702262	1	pressure switch / pressostato				
20	1129701528	1	check valve / valvola di ritegno				
21	1129700633	1	ogive / ogiva				
22	1129700634	1	nut / dado				
23	1129704347	1	feed tube / tubo alimentazione				
24	1129700631	1	nut / dado				
25	1129702649	1	cable / cavetto				
26	1127230001	1	rilsan tube / tubo rilsan				
27	1127010306	1	screw / vite				
28	1129704162	1	washer / rondella				
29	2234900033	1	black casing / carenatura nera				
30	1129704351	1	power cord / cavo alimentazione				
31	1129701171	4	screw / vite				
31A	1129701057	2	screw / vite				
32	1127270008	4	rubber feet / gommino				
33	1129704282	4	washer / rondella				
33A	1127030005	4	washer / rondella				
34	1129702607	3	screw / vite				
34A	1127010229	2	screw / vite				

This exploded view diagram illustrates the assembly of a motor. The components are labeled as follows:

- 900**: Motor housing (main body).
- 901**: Motor housing (front cover).
- 904**: Motor housing (rear cover).
- 906**: Motor housing (mounting bracket).
- 913**: Motor housing (internal frame).
- 915**: Motor housing (rear cap).
- 918**: Motor housing (internal cap).
- 923**: Motor housing (internal cap).

[illegible]

VALID FROM 3/27/2019 - VALIDO DAL 3/27/2019 (REV-00)