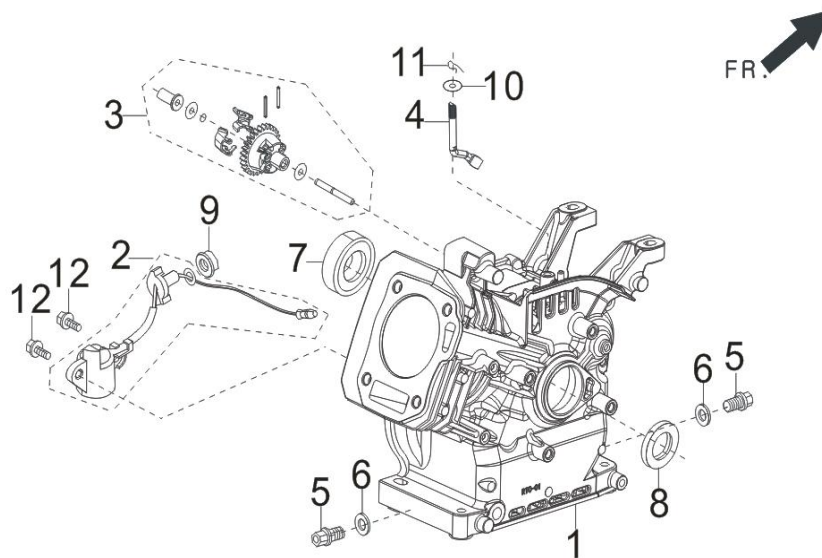


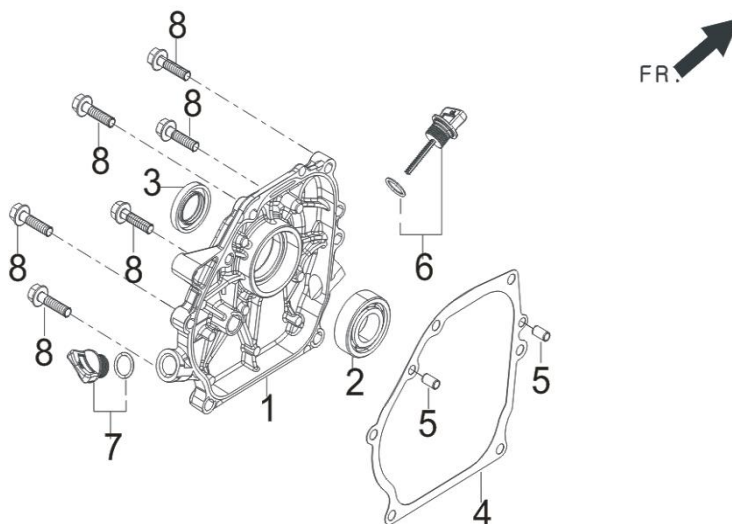
71090

FIG.1 CRANKCASE. / GEAR ASSY, GOVERNOR.(E01)



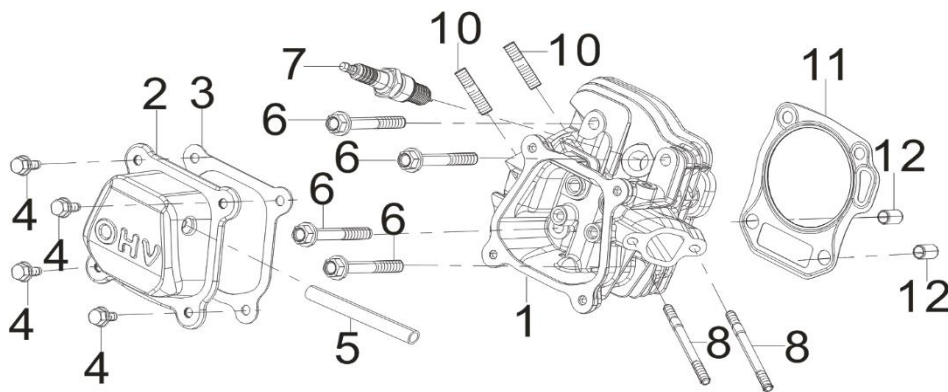
REF.NO.	PART NO	DESCRIPTION	Q'TY
E01-1	11310-Z531220-00A9	CRANKCASE SUBASSEMBLY.	1
E01-2	37060-Z010120-00A0	SENSOR, ENGINE OIL	1
E01-3	16400-Z010110-00A0	GEAR ASSY, GOVERNOR	1
E01-4	16061-Z010110-00A0	ARM, GOVERNOR	1
E01-5	11007-Z010110-00A0	BOLT, DRAIN PLUG	2
E01-6	90408-Z010110-00A0	FLAT WASHER	2
E01-7	90548-0205-CLA0	DEEP GROOVE BALL BEARING	1
E01-8	90682-Z300110-00A0	SEAL, OIL	1
E01-9	90305-Z010210-01A0	HEXAGON NUT WITH FLANGE	1
E01-10	90408-Z010210-00A0	FLAT WASHER	1
E01-11	90501-Z010110-00A0	COTTER PIN	1
E01-12	90001-0614-01A0	BOLT	2

FIG.2 COVER SUBASSEMBLY, CRANKCASE (E02)



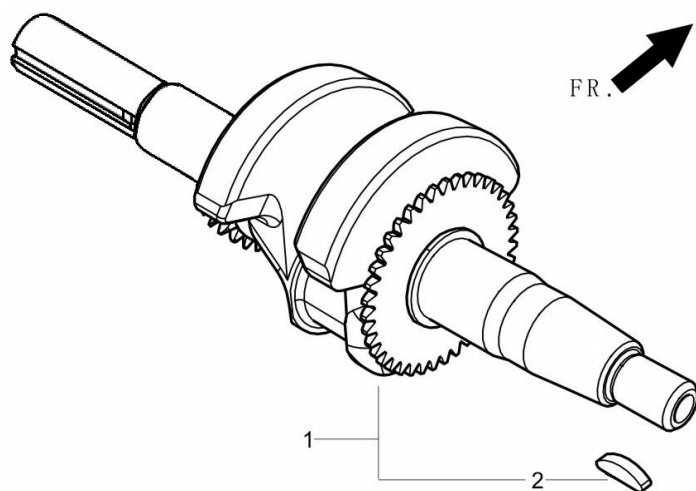
REF.NO.	PART NO	DESCRIPTION	
E02-1	11411-Z441010-00A0	COVER, CRANKCASE	1
E02-2	90548-0205-CLA0	DEEP GROOVE BALL BEARING	1
E02-3	90682-Z300110-00A0	SEAL, OIL	1
E02-4	11001-Z440110-00A0	GASKET, CRANKCASE	1
E02-5	90502-0912-00A0	POSITION PIN - TYPE A	2
E02-6	15010-Z010130-Q5A0	DIPSTICK SUBASSEMBLY, OIL	1
E02-7	15030-Z010130-Q5A0	PLUG SUBASSEMBLY, ENGINE OIL	1
E02-8	90001-0832-01A0	HEXAGON SOCKET FLANGE FACE BOLT - SMALL SERIES	6

FIG.3 HEAD SUBASSEMBLY, CYLINDER / PLUG,SPARK (E03)



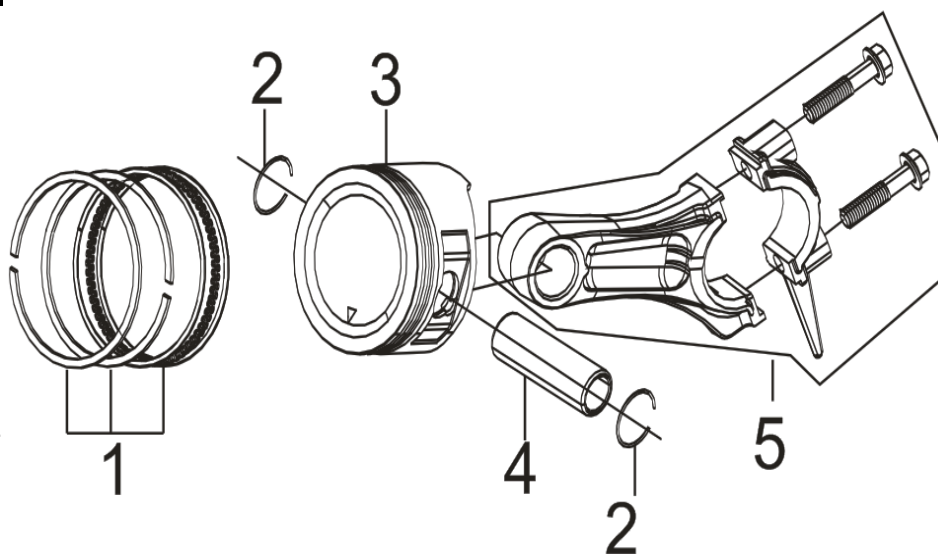
REF.NO.	PART NO	DESCRIPTION	Q'TY
E03-1	12140-Z810210-00A0	HEAD SUBASSEMBLY, CYLINDER	1
E03-2	12410-Z300120-00A0	COVER SUBASSEMBLY, CYLINDER HEAD	1
E03-3	12004-Z010110-0001	CYLINDER HEAD COVER GASKET	1
E03-4	90001-0612-01A0	BOLT	4
E03-5	17004-Z050210-00A0	TUBE, BREATHER	1
E03-6	12003-Z010110-00A0	CYLINDER HEAD BOLT	4
E03-7	30010-Z010110-00A0	PLUG, SPARK	1
E03-8	90204-Z010310-01A0	STUD BOLT	2
E03-10	90203-Z010110-01A0	STUD BOLT	2
E03-11	12131-Z950110-00A0	GASKET, CYLINDER HEAD	1
E03-12	90502-1114-00A0	POSITION PIN - TYPE A	2

FIG.4 ROD,CRANKSHAFT CONNETING (E04)



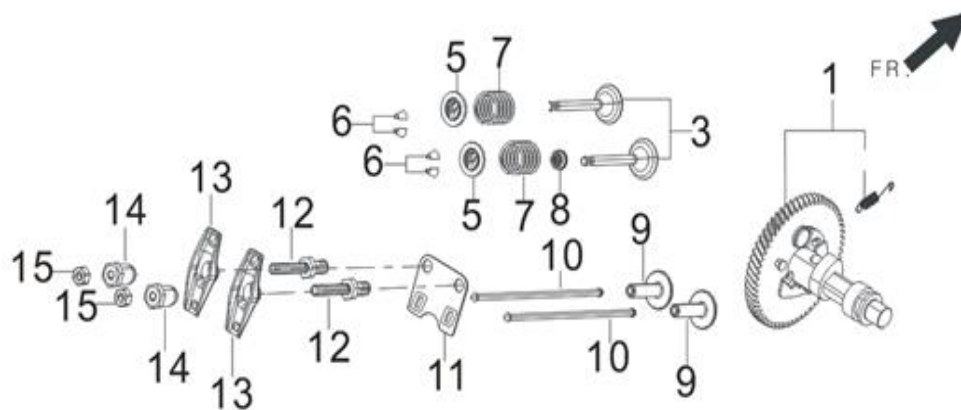
REF.NO.	PART NO	DESCRIPTION	Q'TY
E04-1	13300-Z532510-00A1	CRANKSHAFT ASSY.	1

FIG.5 RING SET,OIL / ROD,CRANKSHAFT CONNETING (E05)



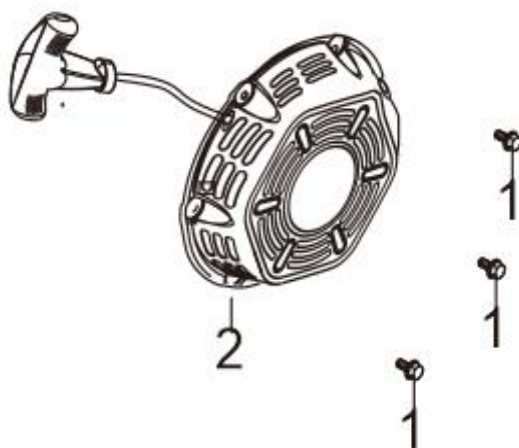
REF.NO.	PART NO	DESCRIPTION	Q'TY
E05-1	13200-Z140210-00A9	RING ASSY, PISTON	1
E05-2	13122-Z010110-00A0	CLIP, PISTON PIN	2
E05-3	13111-Z140220-00A9	PISTON	1
E05-4	13121-Z010110-00A0	PIN, PISTON	1
E05-5	13010-Z440210-00A9	ROD, CONNECTING	1

FIG.6 TRAIN,VALVE / CAMSHAFT SUBASSEMBLY (E06)



REF.NO.	PART NO	DESCRIPTION	Q'TY
E06-1	14200-Z530210-00A9	CAMSHAFT ASSY.	1
E06-3	12110-Z810120-00A9	VALVES SET	1
E06-5	12112-Z810210-00A0	SEAT, VALVE SPRING	2
E06-6	12109-Z810110-00A0	CLAMP, VALVE LOCK	4
E06-7	12103-Z030110-00A0	SPRING, VALVE	2
E06-8	12101-Z810210-00A0	GUIDE, SEAL	1
E06-9	14081-Z040110-00A0	TAPPET, VALVE	2
E06-10	14071-Z440110-00A0	LIFTER, VALVE	2
E06-11	14090-Z010110-00A0	PLATE SUBASSEMBLY, LIFTER STOPPER	1
E06-12	14313-Z010110-00A0	ROCKSHAFT BOLT	2
E06-13	14311-Z010110-00A0	ROCKER, VALVE	2
E06-14	14314-Z010110-00A0	NUT, VALVE ADJUSTING	2
E06-15	14312-Z010110-00A0	NUT, VALVE LOCK	2

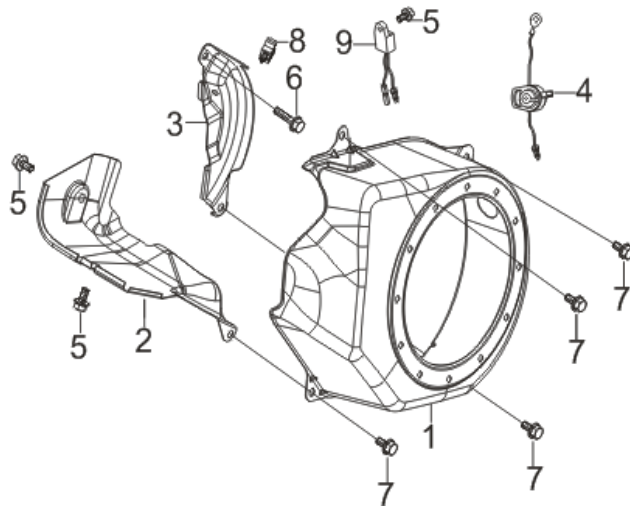
FIG.7 STARTER,RECOIL (E07)



REF.NO.	PART NO	DESCRIPTION	Q'TY
E07-1	90001-0608-01A0	BOLT	3

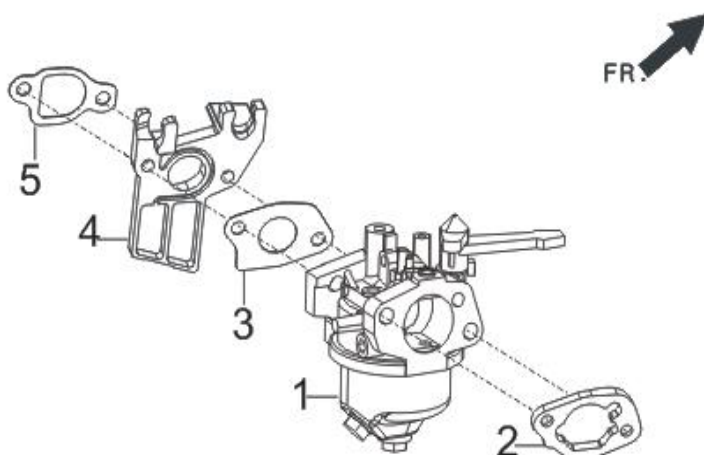
E07-2	28200-Z300110-H700	STARTER ASSY, RECOIL	1
-------	--------------------	----------------------	---

FIG.8 SHROUD / SHIELD,LOWER (E08)



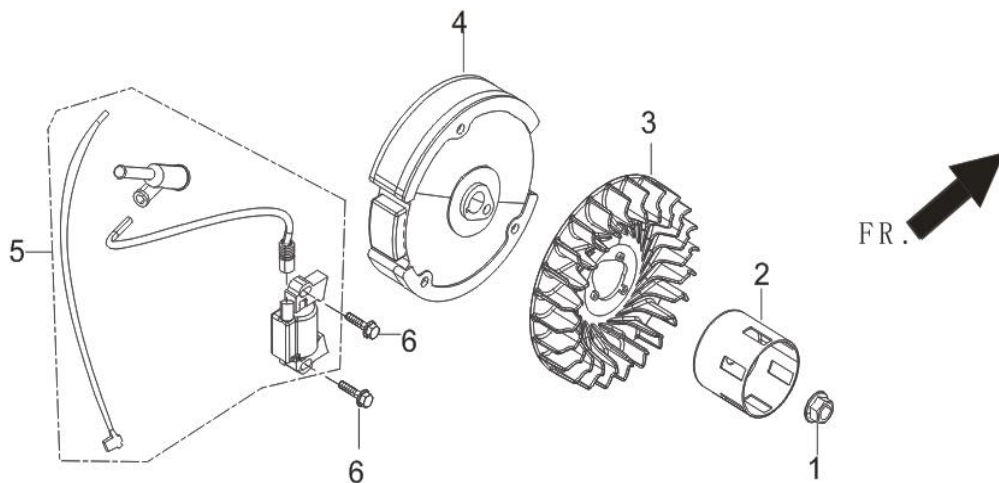
REF.NO.	PART NO	DESCRIPTION	Q'TY
E08-1	28110-Z010410-H700	SHROUD	1
E08-2	19304-Z010610-00A0	SHROUD, CYLINDER BODY	1
E08-3	19340-Z011011-0000	SHIELD,LOWER	1
E08-4	35540-Z060140-Q2A0	SWITCH SUBASSEMBLY, STOP ENGINE	1
E08-5	90001-0610-01A0	HEXAGON SOCKET FLANGE FACE BOLT - SMALL SERIES	3
E08-6	90001-0620-01A0	BOLT	1
E08-7	90001-0612-01A0	HEXAGON SOCKET FLANGE FACE BOLT - SMALL SERIES	4
E08-8	90740-Z010110-00A0	COLLAR	1
E08-9	37050-Z010210-00A0	PROTECTOR, OIL	1

FIG.9 CARBURETOR ASSY. (E09)



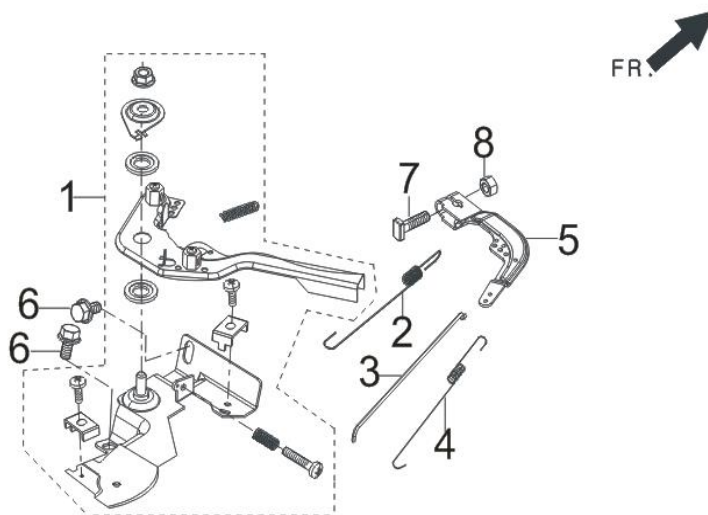
REF.NO.	PART NO	DESCRIPTION	Q'TY
E09-1	16100-Z530610-00A9	CARBURETOR ASSY.	1
E09-2	17001-Z010210-00A0	AIR CLEANER SEAL GASKET	1
E09-3	16001-Z010110-00A0	CARBURETOR SEAL GASKET	1
E09-4	16003-Z010110-0001	PLATE, CARBURETOR INSULATOR	1
E09-5	16002-Z010110-00A0	GASKET, CARBURETOR INSULATOR	1

FIG.10 FLYWHEEL / IMPELLER / STARTER PULLEY / IGNITION COIL (E10)



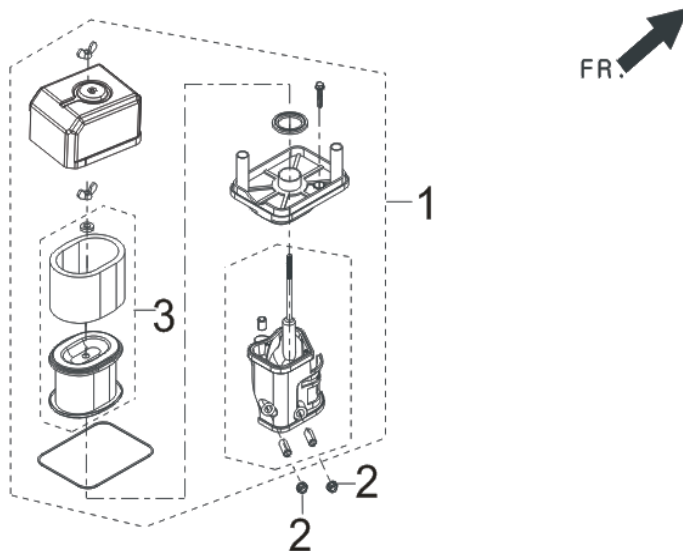
REF.NO.	PART NO	DESCRIPTION	Q'TY
E10-1	13501-Z010110-00A0	NUT, FLYWHEEL	1
E10-2	28002-Z010310-00A0	PULLEY, STARTER	1
E10-3	19352-Z440110-00A0	IMPELLER	1
E10-4	13510-Z440410-00A0	FLYWHEEL SUBASSEMBLY	1
E10-5	30400-Z440410-00B0	COIL, IGNITION	1
E10-6	90001-0625-01A0	BOLT	2

FIG.11 CONTROL ASSY, THROTTLE (E11)



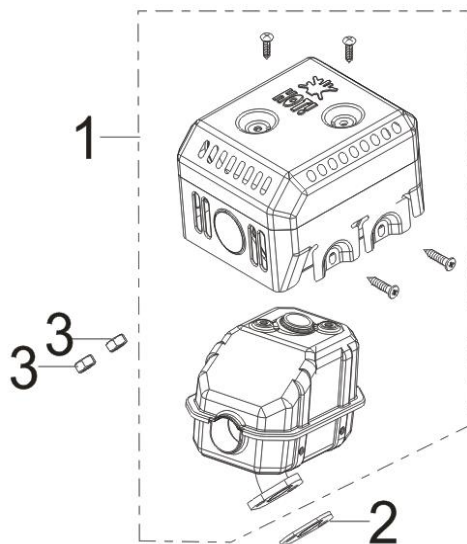
REF.NO.	PART NO	DESCRIPTION	Q'TY
E11-1	16520-Z010230-00A0	CONTROL ASSY, THROTTLE	1
E11-2	16063-Z050410-00A0	SPRING, GOVERNOR	1
E11-3	16062-Z010110-00A0	ROD, GOVERNEOR	1
E11-4	16012-Z010110-00A0	SPRING, THROTTLE VALVE RETURNING	1
E11-5	16070-Z010110-0001	GOVERNOR BRACKET SUBASSEMBLY	1
E11-6	90001-0610-01A0	BOLT	2
E11-7	16072-Z010110-01A0	BOLT, GOVERNOR SUPPORT	1
E11-8	90305-0600-01A1	HEXAGON NUT WITH FLANGE	1

FIG.12 CLEANER, AIR (F01)



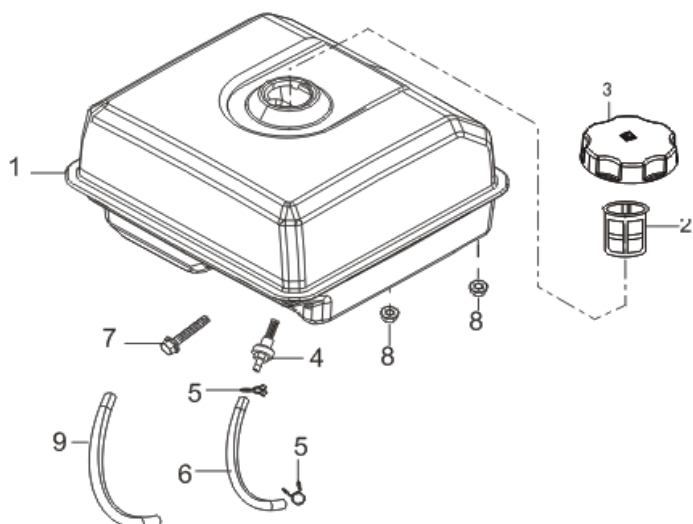
REF.NO.	PART NO	DESCRIPTION	Q'TY
F01-1	17100-Z010210-00A0	AIR CLEANER	1
F01-2	90305-0600-31A0	HEXAGON NUT WITH FLANGE	2
F01-3	17150-Z010110-00A0	ELEMENT, AIR CLEANER	1

FIG.13 MUFFLER ASSY. (F02)



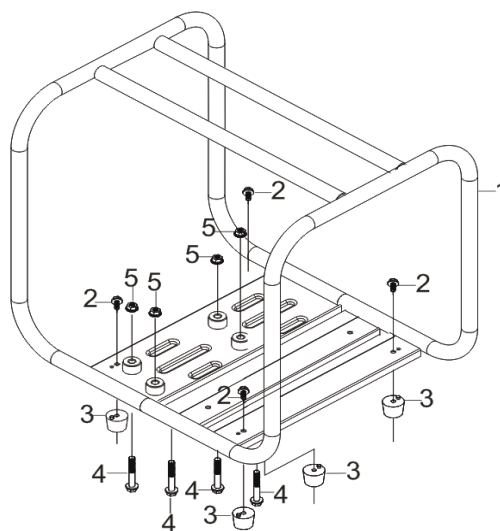
REF.NO.	PART NO	DESCRIPTION	Q'TY
F02-1	18100-Z015510-H7A0	MUFFLER ASSY.	1
F02-2	18001-Z440110-00A0	GASKET, EXHAUST OUTLET	1
F02-3	90303-0800-31A0	TYPE 1 HEXAGON NUT	2

FIG.14 TANK ASSY, FUEL (F03)

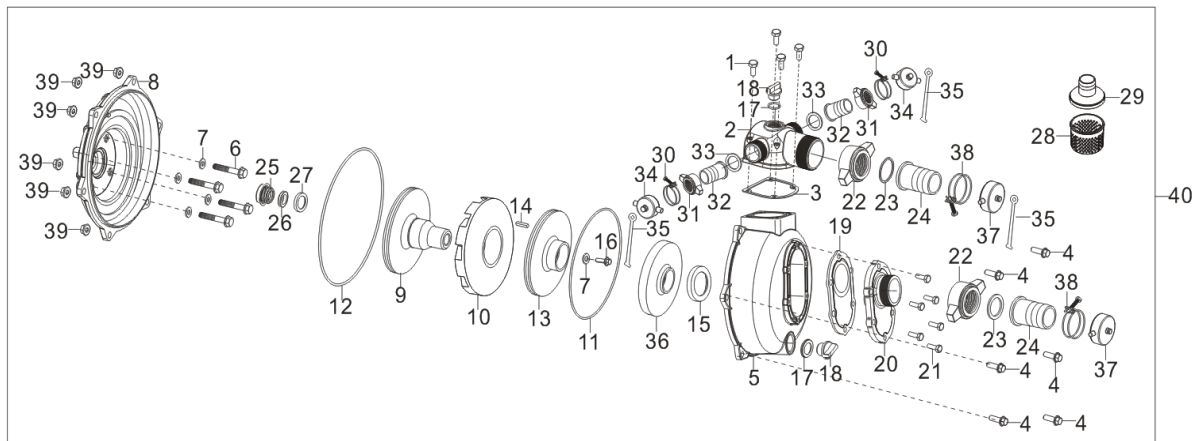


REF.NO.	PART NO	DESCRIPTION	Q'TY
F03-1	16620-Z441610-H70P	FUEL TANK	1
F03-2	16652-Z010610-00A0	STRAINER, FUEL	1
F03-3	16730-Z011010-H7A0	COVER, FUEL TANK	1
F03-4	16680-Z010110-00A0	OUTLET SUBASSEMBLY, FUEL TANK OIL	1
F03-5	90740-Z010510-00A0	COLLAR	2
F03-6	90686-Z010510-00A0	TUBE, FUEL	1
F03-7	90001-0632-01A0	BOLT	1
F03-8	90305-0600-31A0	HEXAGON NUT WITH FLANGE	2
F03-9	30431-Z010110-00A0	JACKET, RUBBER	1

FIG.15 FRAME, ENGINE (F04)



REF.NO.	PART NO	DESCRIPTION	Q'TY
F04-1	51100-V020210-H7A0	FRAME ASSY, ENGINE	1
F04-2	90001-0610-01A0	BOLT	4
F04-3	51014HY450110-00A0	SEAT, ENGINE FRAME SHOCK ABSORPTION	4
F04-4	90001-0850-01A0	BOLT	4
F04-5	90327-0800-31A0	HEXAGON NUT WITH FLANGE	4

FIG.16 (F61)

REF.NO.	PART NO	DESCRIPTION	Q'TY
F61-1	90001-0825-01	BOLT	4
F61-2	70108-V070810-WDA0	OUTLET, WATER	1
F61-3	70109-V070310-0000	GASKET, OUTLET	1
F61-4	90001-1040-01	BOLT	6
F61-5	70105-V070510-WDA0	PUMP BODY	1
F61-6	90001-V010210-0000	BOLT	4
F61-7	90409-V010110-0000	SEAL WASHER	5
F61-8	70118-V100110-WDA0	JOINT, WATER PUMP	1
F61-9	70251-V100410-0000	PRIMARY PUMP IMPELLER	1
F61-10	70126-V100410-0000	SLEEVE, IMPELLER	1
F61-11	70136-V100410-0000	IMPELLER BUSH SEAL RING	1
F61-12	70119-V070210-0000	CUSHION, WATER PUMP JOINT	1
F61-13	70252-V100410-0000	PRIMARY PUMP IMPELLER	1
F61-14	90522-V100410-0000	Flat key	1
F61-15	70104-V070510-0000	RIGN, WHORL CASE SEALING	1
F61-16	90001-V010110-0000	BOLT	1
F61-17	70122-V070210-0000	WASHER, SCREW PLUG	2
F61-18	70107-V070210-0000	PLUG, THREAD	2
F61-19	70115-V070210-0000	GASKET, INLET WATER	1
F61-20	70116-V070710-WDA0	INLET, WATER	1
F61-21	90001-0825-01-0000	BOLT	6
F61-22	70111-V010110-WDA0	JOINT, HOSE	2
F61-23	70131-V010110-0000	RING, HOSE JOINT SEAL	2
F61-24	70112-V010110-WDA0	INTERFACE, HOSE	2
F61-25	70300-V070210-0000	SEAL ASSY, MECHANISM	1
F61-26	70309-V070210-0000	SEAL, PORCELAIN	1
F61-27	70125-V070210-0000	RING, IMPELLER SEAL	1
F61-28	70114-V010110-0000	FILTER	1
F61-29	70113-V010110-0000	COVER, FILTER	1
F61-30	70400-V050410-0000	HOOP SUBASSEMBLY, HOSE	2
F61-31	70111-V050510-WDA0	JOINT, HOSE	2

F61-32	70112-V050510-WDA0	INTERFACE, HOSE	2
F61-33	70131-V050110-0000	RING, HOSE JOINT SEAL	2
F61-34	70137-V070110-0000	WATER OUTLET PLUG CAP	2
F61-35	70138-V070110-0000	PLUG CAP HANGING STRIP	3
F61-36	70103-V100110-0000	CASE, WHORL	1
F61-37	70137-V070210-0000	WATER OUTLET PLUG CAP	2
F61-38	70400-V010110-0000	HOOP SUBASSEMBLY, HOSE	2
F61-39	90327-1000-31	HEXAGON NUT WITH FLANGE	6
F61-40	70100-V100810-WDA0	PUMP ASSY, WATER	1

