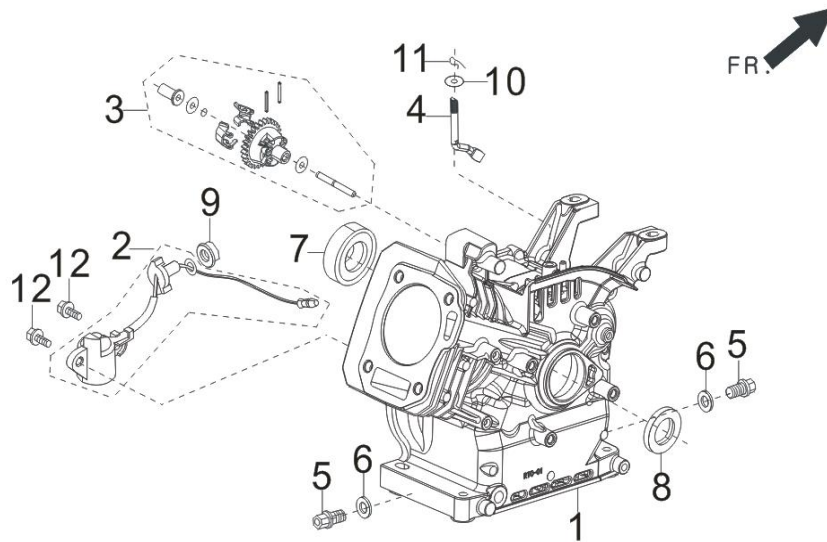


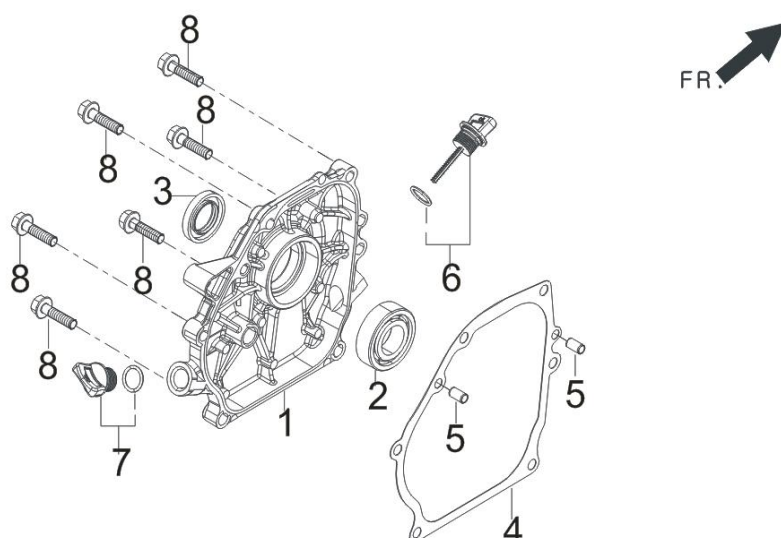
71084

FIG.1 CRANKCASE. / GEAR ASSY, GOVERNOR. (E01)



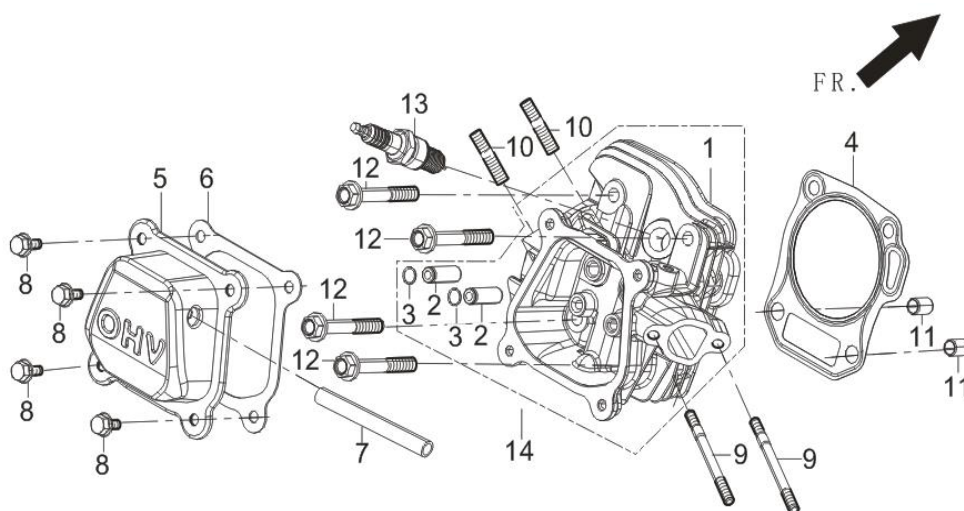
REF.NO.	PART NO	DESCRIPTION
E01-1	11310-Z531220-00A9	CRANKCASE SUBASSEMBLY.
E01-2	37060-Z010120-00A0	SENSOR, ENGINE OIL
E01-3	16400-Z010110-00A0	GEAR ASSY, GOVERNOR
E01-4	16061-Z010110-00A0	ARM, GOVERNOR
E01-5	11007-Z010110-00A0	BOLT, DRAIN PLUG
E01-6	90408-Z010110-00A0	FLAT WASHER
E01-7	90548-0205-CLA0	DEEP GROOVE BALL BEARING
E01-8	90682-Z300110-00A0	SEAL, OIL
E01-9	90305-Z010210-01A0	HEXAGON NUT WITH FLANGE
E01-10	90408-Z010210-00A0	FLAT WASHER
E01-11	90501-Z010110-00A0	COTTER PIN
E01-12	90001-0614-01A0	BOLT

FIG.2 COVER SUBASSEMBLY, CRANKCASE (E02)



REF.NO.	PART NO	DESCRIPTION
E02-1	11411-Z441010-00A0	COVER, CRANKCASE
E02-2	90548-0205-CLA0	DEEP GROOVE BALL BEARING
E02-3	90682-Z300110-00A0	SEAL, OIL
E02-4	11001-Z440110-00A0	GASKET, CRANKCASE
E02-5	90502-0912-00A0	POSITION PIN - TYPE A
E02-6	15010-Z010130-Q5A0	DIPSTICK SUBASSEMBLY, OIL
E02-7	15030-Z010130-Q5A0	PLUG SUBASSEMBLY, ENGINE OIL
E02-8	90001-0832-01A0	HEXAGON SOCKET FLANGE FACE BOLT - SMALL SERIES

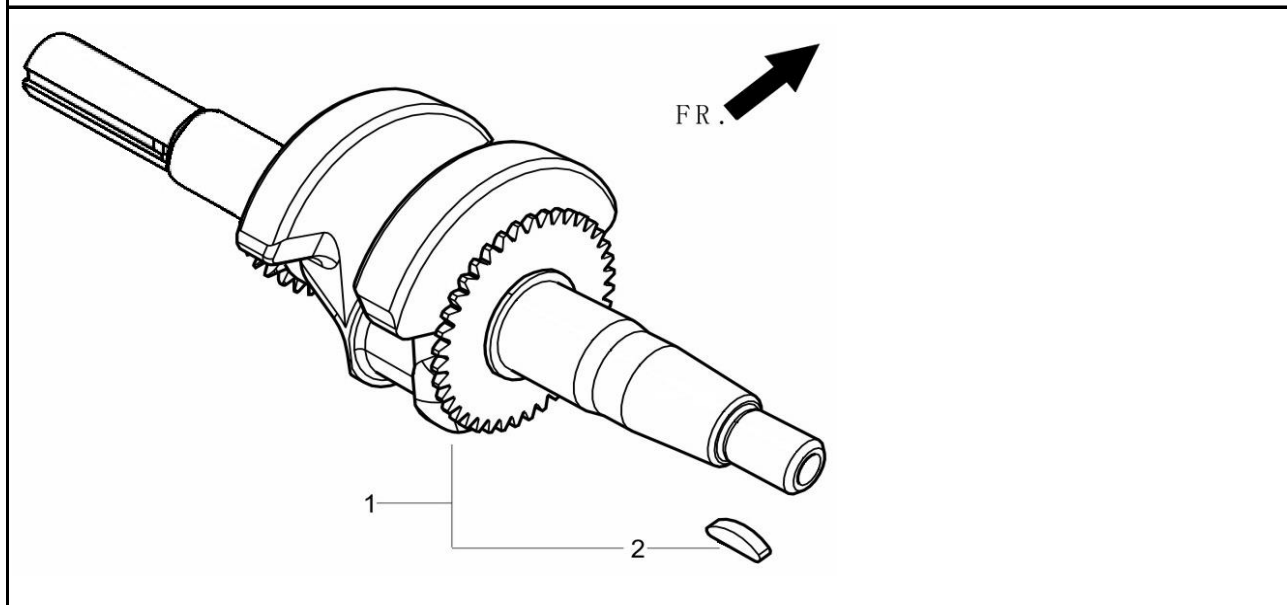
FIG.3 HEAD SUBASSEMBLY, CYLINDER / PLUG,SPARK (E03)



REF.NO.	PART NO	DESCRIPTION
E03-4	12131-Z950110-00A0	GASKET, CYLINDER HEAD
E03-5	12410-Z300120-00A0	COVER SUBASSEMBLY, CYLINDER HEAD
E03-6	12004-Z010110-0001	CYLINDER HEAD COVER GASKET
E03-7	17004-Z050210-00A0	TUBE, BREATHER

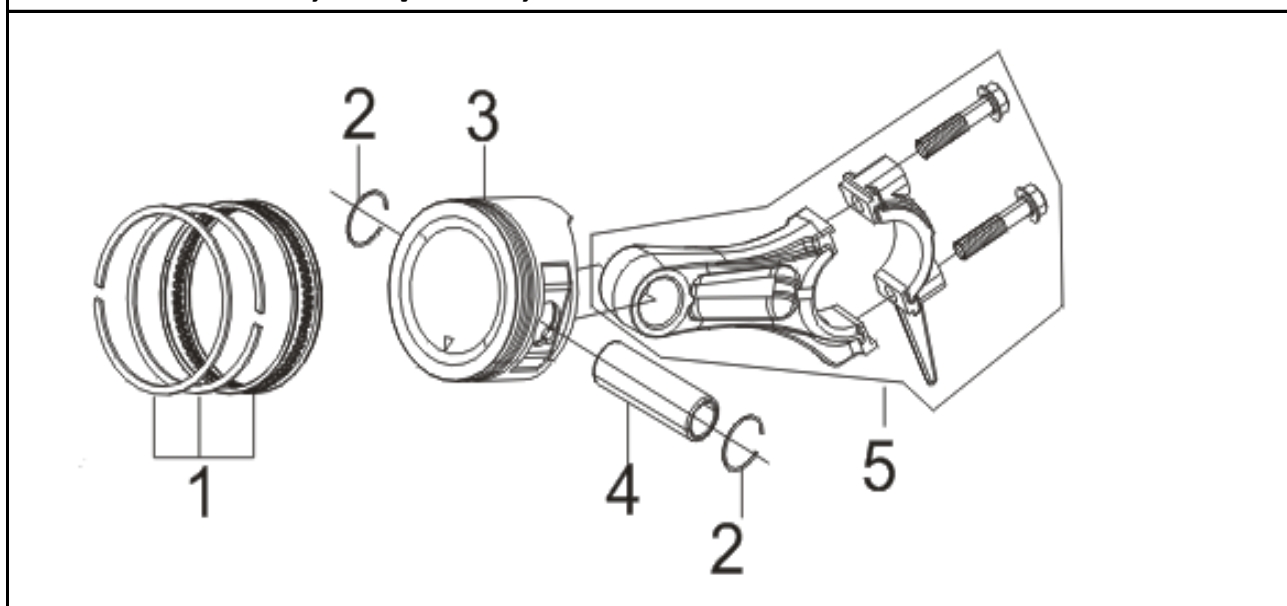
E03-8	90001-0612-01A0	HEXAGON SOCKET FLANGE FACE BOLT - SMALL SERIES
E03-9	90204-Z010310-01A0	STUD BOLT
E03-10	90203-Z010110-01A0	STUD BOLT
E03-11	90502-1114-00A0	POSITION PIN - TYPE A
E03-12	12003-Z010110-00A0	CYLINDER HEAD BOLT
E03-13	30010-Z010110-00A0	PLUG, SPARK
E03-14	12140-Z810210-00A0	HEAD SUBASSEMBLY, CYLINDER

FIG.4 ROD,CRANKSHAFT CONNETING (E04)



REF.NO.	PART NO	DESCRIPTION
E04-1	13300-Z533210-00A1	CRANKSHAFT ASSY.

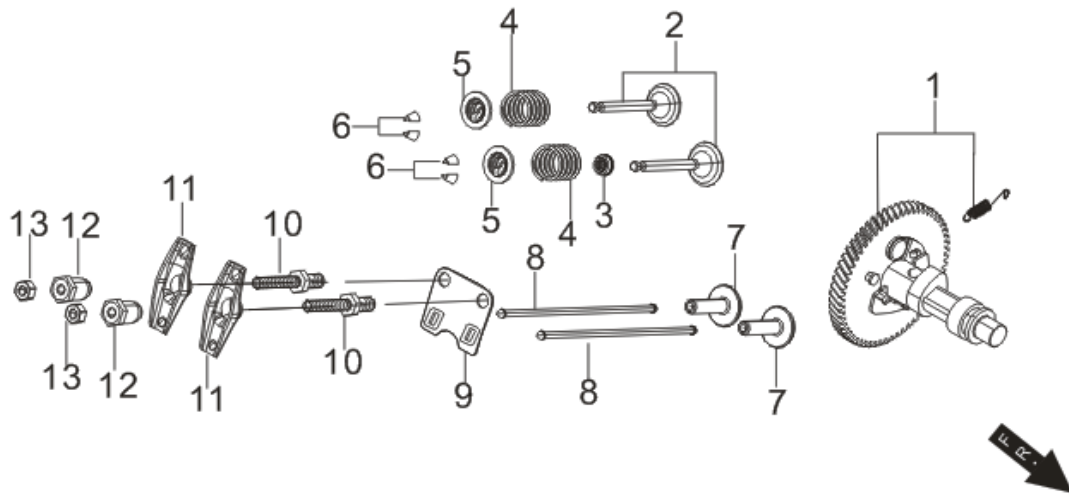
FIG.5 RING SET,OIL / ROD,CRANKSHAFT CONNETING (E05)



REF.NO.	PART NO	DESCRIPTION
E05-1	13200-Z140210-00A9	RING ASSY, PISTON
E05-2	13122-Z010110-00A0	CLIP, PISTON PIN

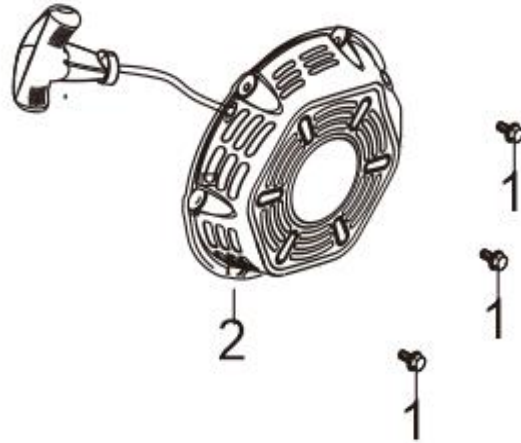
E05-3	13111-Z140220-00A9	PISTON
E05-4	13121-Z010110-00A0	PIN, PISTON
E05-5	13010-Z440210-00A9	ROD, CONNECTING

FIG.6 TRAIN,VALVE / CAMSHAFT SUBASSEMBLY (E06)



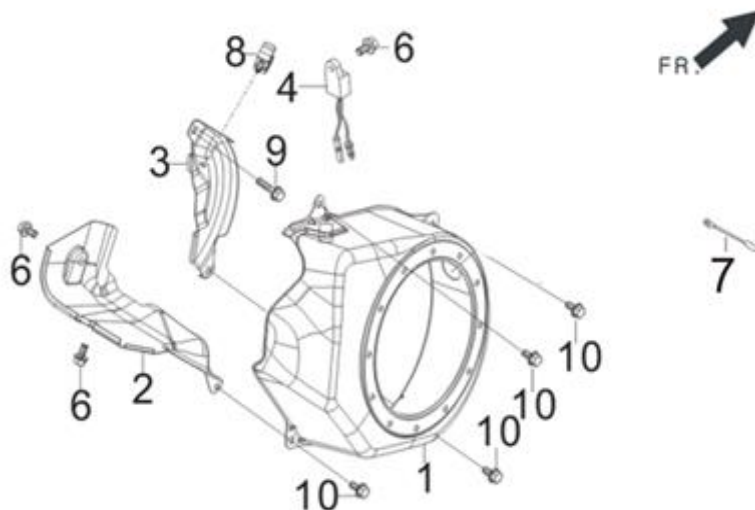
REF.NO.	PART NO	DESCRIPTION
E06-1	14200-Z530210-00A9	CAMSHAFT ASSY.
E06-2	12110-Z810120-00A9	VALVES SET
E06-3	12101-Z810210-00A0	GUIDE, SEAL
E06-4	12103-Z030110-00A0	SPRING, VALVE
E06-5	12112-Z810210-00A0	SEAT, VALVE SPRING
E06-6	12109-Z810110-00A0	CLAMP, VALVE LOCK
E06-7	14081-Z040110-00A0	TAPPET, VALVE
E06-8	14071-Z440110-00A0	LIFTER, VALVE
E06-9	14090-Z010110-00A0	PLATE SUBASSEMBLY, LIFTER STOPPER
E06-10	14313-Z010110-00A0	ROCKSHAFT BOLT
E06-11	14311-Z010110-00A0	ROCKER, VALVE
E06-12	14314-Z010110-00A0	NUT, VALVE ADJUSTING
E06-13	14312-Z010110-00A0	NUT, VALVE LOCK

FIG.7 STARTER,RECOIL (E07)



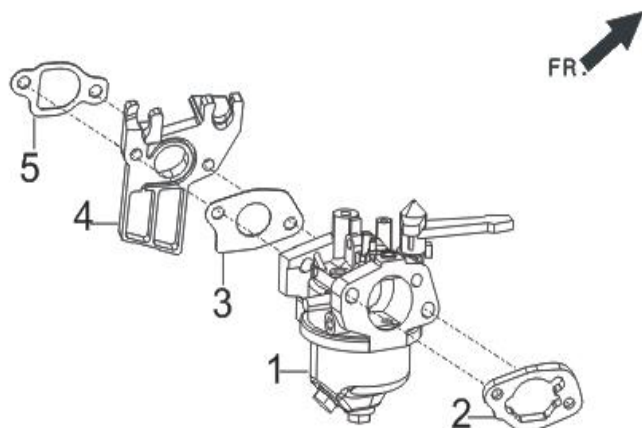
REF.NO.	PART NO	DESCRIPTION
E07-1	90001-0608-01A0	HEXAGON SOCKET FLANGE FACE BOLT - SMALL SERIES
E07-2	28200-Z300110-H700	STARTER ASSY, RECOIL

FIG.8 SHROUD / SHIELD,LOWER (E08)



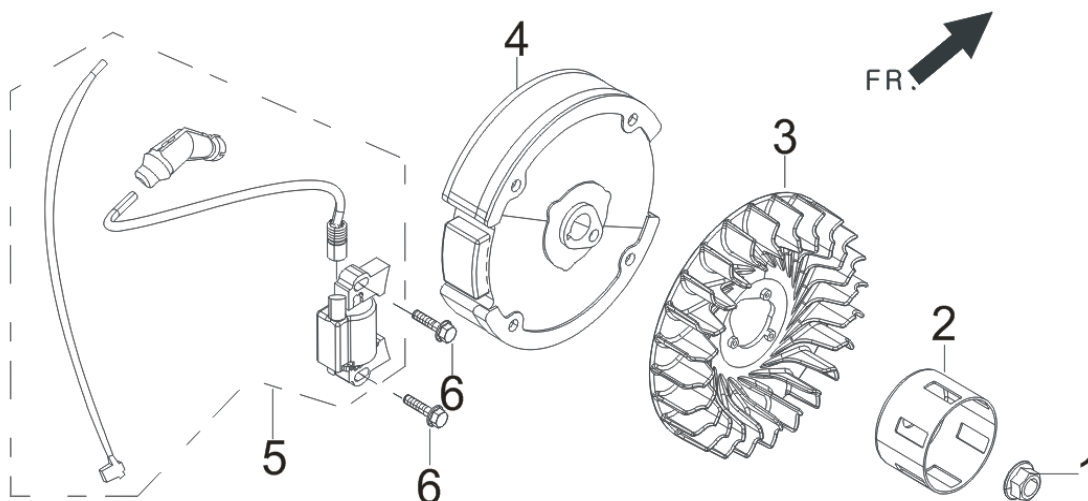
REF.NO.	PART NO	DESCRIPTION
E08-1	28110-Z010410-H700	SHROUD
E08-2	19304-Z010610-00A0	SHROUD, CYLINDER BODY
E08-3	19340-Z011011-0000	SHIELD,LOWER
E08-4	37050-Z010210-00A0	PROTECTOR, OIL
E08-6	90001-0610-01A0	HEXAGON SOCKET FLANGE FACE BOLT - SMALL SERIES
E08-7	30009-Z010110-00A0	GROUNDING
E08-8	90740-Z010110-00A0	COLLAR
E08-9	90001-0620-01A0	BOLT
E08-10	90001-0612-01A0	HEXAGON SOCKET FLANGE FACE BOLT - SMALL SERIES

FIG.9 CARBURETOR ASSY. (E09)



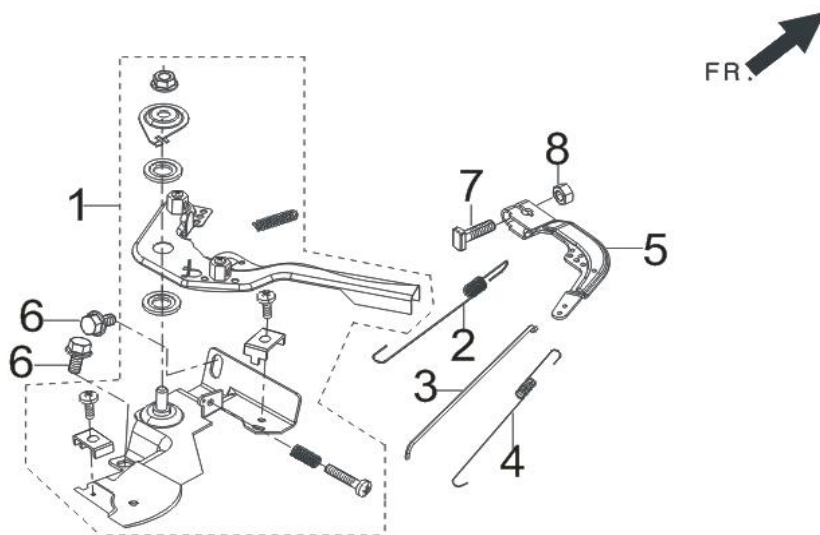
REF.NO.	PART NO	DESCRIPTION
E09-1	16100-Z530610-00A9	CARBURETOR ASSY.
E09-2	17001-Z010210-00A0	AIR CLEANER SEAL GASKET
E09-3	16001-Z010110-00A0	CARBURETOR SEAL GASKET
E09-4	16003-Z010110-0001	PLATE, CARBURETOR INSULATOR
E09-5	16002-Z010110-00A0	GASKET, CARBURETOR INSULATOR

FIG.10 FLYWHEEL / IMPELLER / STARTER PULLEY / IGNITION COIL (E10)



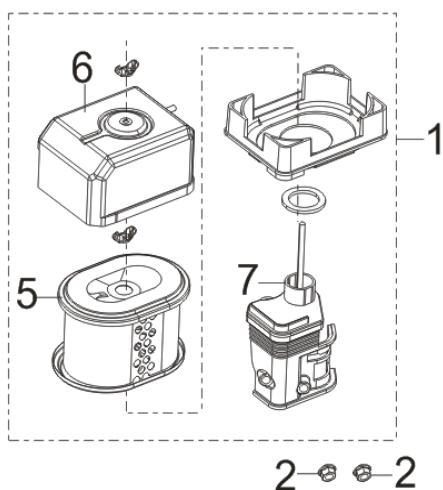
REF.NO.	PART NO	DESCRIPTION
E10-1	13501-Z010110-00A0	NUT, FLYWHEEL
E10-2	28002-Z010310-00A0	PULLEY, STARTER
E10-3	19352-Z440110-00A0	IMPELLER
E10-4	13510-Z440410-00A0	FLYWHEEL SUBASSEMBLY
E10-5	30400-Z440410-00B0	COIL, IGNITION
E10-6	90001-0625-01A0	BOLT

FIG.11 CONTROL ASSY, THROTTLE (E11)



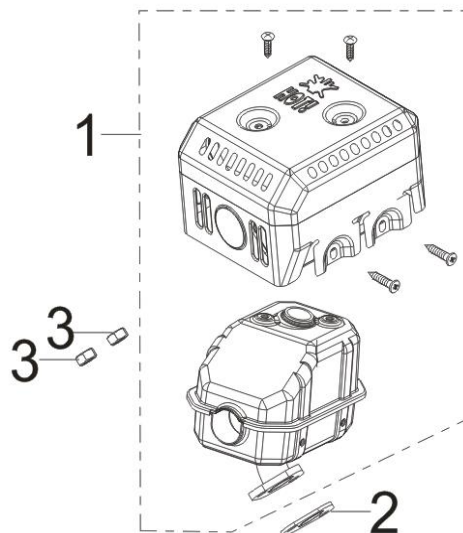
REF.NO.	PART NO	DESCRIPTION
E11-1	16520-Z010230-00A0	CONTROL ASSY, THROTTLE
E11-2	16063-Z050410-00A0	SPRING, GOVERNOR
E11-3	16062-Z010110-00A0	ROD, GOVERNEOR
E11-4	16012-Z010110-00A0	SPRING, THROTTLE VALVE RETURNING
E11-5	16070-Z010110-0001	GOVERNOR BRACKET SUBASSEMBLY
E11-6	90001-0610-01A0	BOLT
E11-7	16072-Z010110-01A0	BOLT, GOVERNOR SUPPORT
E11-8	90305-0600-01A1	HEXAGON NUT WITH FLANGE

FIG.12 CLEANER, AIR (F01)



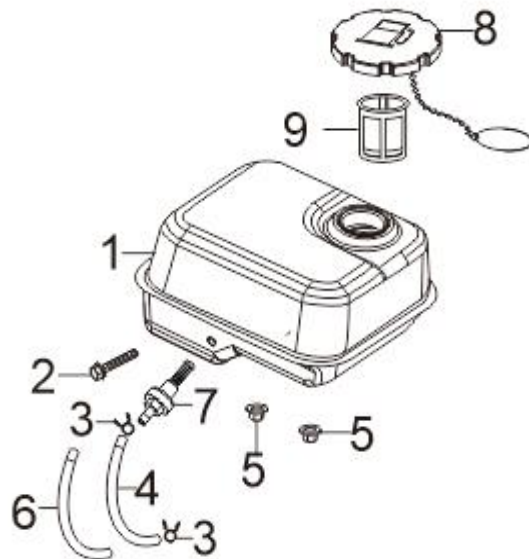
REF.NO.	PART NO	DESCRIPTION
F01-1	17100-Z010210-00A0	AIR CLEANER
F01-2	90305-0600-31A0	HEXAGON NUT WITH FLANGE
F01-5	17150-Z010110-0000	ELEMENT, AIR CLEANER

FIG.13 MUFFLER ASSY. (F02)



REF.NO.	PART NO	DESCRIPTION
F02-1	18100-Z015510-H7A0	MUFFLER ASSY.
F02-2	18001-Z440110-00A0	GASKET, EXHAUST OUTLET
F02-3	90303-0800-31A0	TYPE 1 HEXAGON NUT

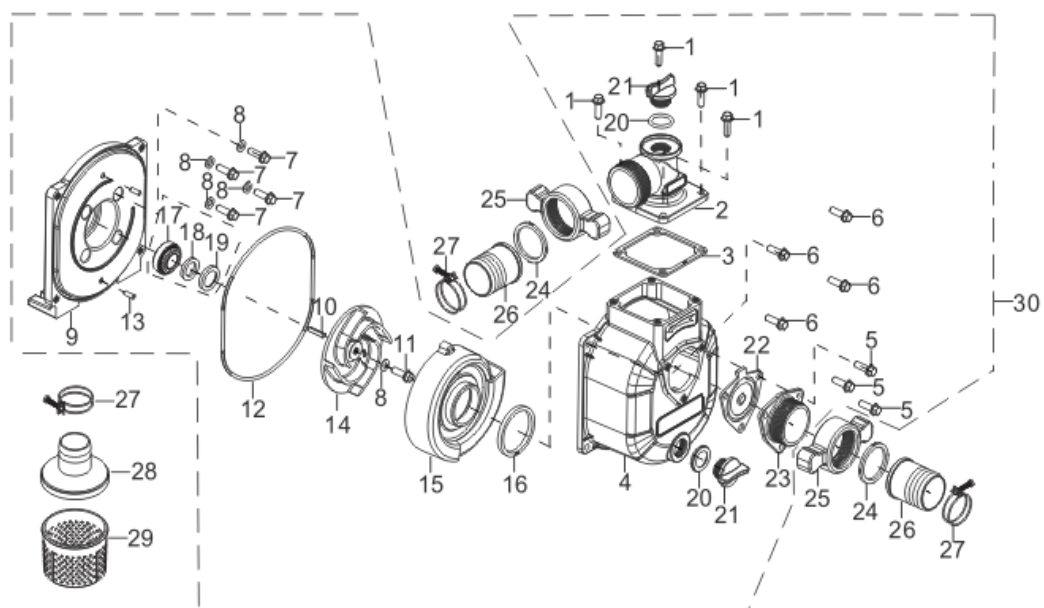
FIG.14 TANK ASSY, FUEL (F03)



REF.NO.	PART NO	DESCRIPTION
F03-1	16620-Z441610-H70P	FUEL TANK
F03-2	90001-0632-01A0	BOLT
F03-3	90740-Z010510-00A0	COLLAR
F03-4	90686-Z010510-00A0	TUBE, FUEL
F03-5	90305-0600-31A0	HEXAGON NUT WITH FLANGE
F03-6	30431-Z010110-00A0	JACKET, RUBBER
F03-7	16680-Z010110-00A0	OUTLET SUBASSEMBLY, FUEL TANK OIL
F03-8	16730-Z011010-H7A0	COVER, FUEL TANK

F03-9	16652-Z010610-00A0	STRAINER, FUEL
-------	--------------------	----------------

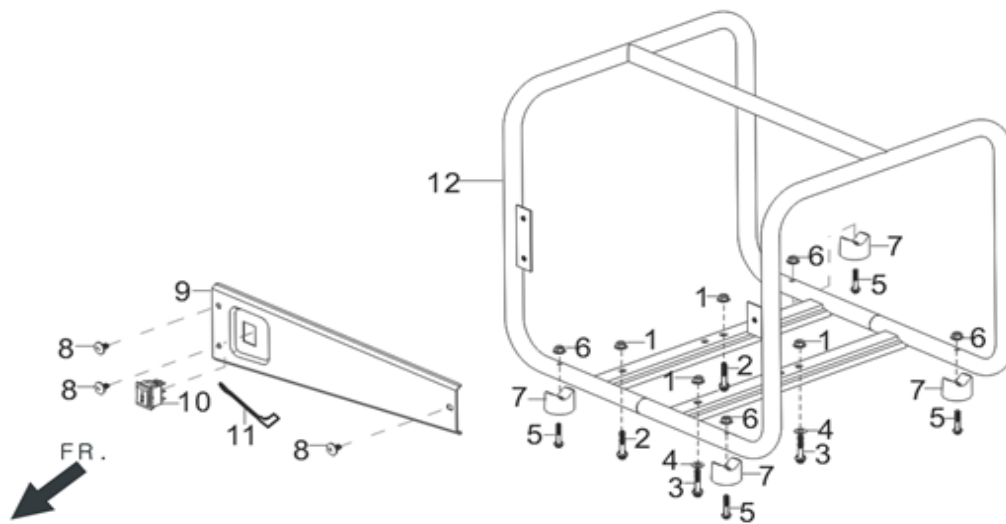
15: (F61)



REF.NO.	PART NO	DESCRIPTION
F61-1	90001-0820-01	BOLT
F61-2	70108-V330310-0KA0	OUTLET, WATER
F61-3	70109-V330110-0000	GASKET, OUTLET
F61-4	70105-V330210-0KA0	PUMP BODY
F61-5	90001-0820-01	BOLT
F61-6	90001-0825-01	BOLT
F61-7	90001-V020110-0000	BOLT
F61-8	90409-V260110-0000	SEAL WASHER
F61-9	70118-V330110-0KA0	JOINT, WATER PUMP
F61-10	90522-V010110-0000	GENERAL FLAT KEY
F61-11	90001-V070110-0000	BOLT
F61-12	70119-V330110-0000	CUSHION, WATER PUMP JOINT
F61-13	90505-0618-00	CYLINDRICAL PIN - AUSTENITE
F61-14	70102-V330110-0000	IMPELLER, WATER PUMP
F61-15	70103-V330110-0000	CASE, WHORL
F61-16	70104-V330110-0000	RIGN, WHORL CASE SEALING
F61-17	70300-V260210-0000	SEAL ASSY, MECHANISM
F61-18	70309-V260210-0000	SEAL, PORCELAIN
F61-19	70125-V260210-0000	RING, IMPELLER SEAL
F61-20	70122-V260110-0000	WASHER, SCREW PLUG

F61-21	70107-V330110-0000	PLUG, THREAD
F61-22	70115-V330110-0000	GASKET, INLET WATER
F61-23	70116-V330110-0KA0	INLET, WATER
F61-24	70131-V260210-00A0	RING, HOSE JOINT SEAL
F61-25	70111-V260410-0KA0	JOINT, HOSE
F61-26	70112-V260410-0KA0	INTERFACE, HOSE
F61-27	70400-V260210-01A0	HOOP SUBASSEMBLY, HOSE
F61-28	70113-V260210-00A0	COVER, FILTER
F61-29	70114-V260210-00A0	FILTER
F61-30	70100-V331810-0KA0	PUMP ASSY, WATER

FIG.16 FRAME ASSY, ENGINE (F04)



REF.NO.	PART NO	DESCRIPTION
F04-1	90327-0800-31A0	HEXAGON NUT WITH FLANGE
F04-2	90001-0835-01A0	BOLT
F04-3	90001-0825-01A0	BOLT
F04-4	90406-0800-E1A0	WASHER, FLAT
F04-5	90001-0635-01A0	BOLT
F04-6	90305-0600-31A0	HEXAGON NUT WITH FLANGE
F04-7	51014HX090120-00A0	SEAT, ENGINE FRAME SHOCK ABSORPTION
F04-8	90111-Y460110-00A0	SCREW, INNER HEX. FLAT
F04-9	51025-V330110-H7A0	ENGINE FRAME DECORATED PLATE
F04-10	35160-Y450110-QGA0	SWITCH SUBASSEMBLY
F04-11	35541-V330120-00A0	WIRE, STOP ENGINE
F04-12	51100-V330210-H7A0	FRAME ASSY, ENGINE