

drawing 1.picture of dimensions sketch of spindle box parts structure

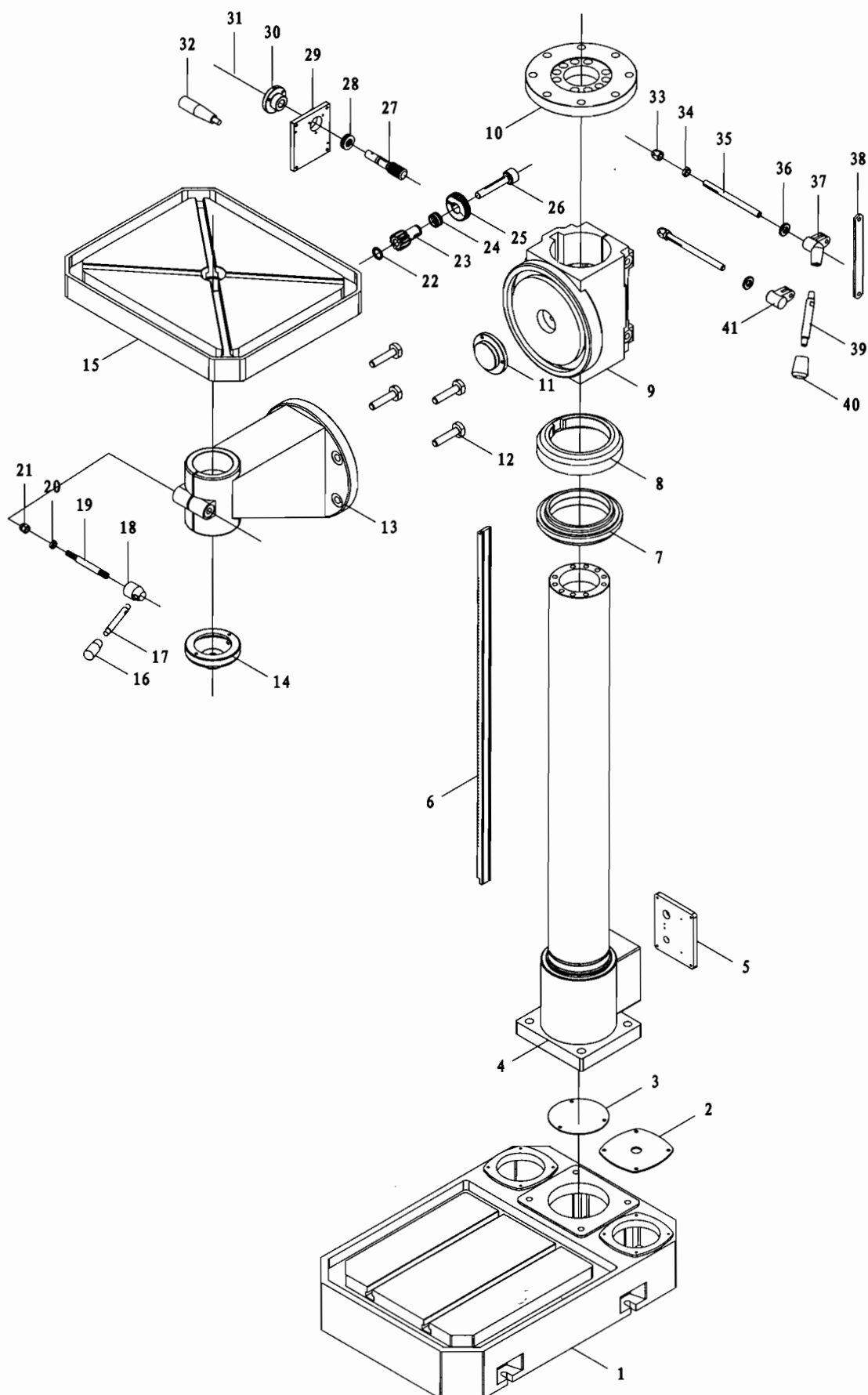
Model ZN5035A		Ancillary page of Operation Manual	page 2	
Contrast for the parts number of ZN5035A spindle box and its three dimensions sketch.				
No.	Parts number	Name of the parts	Q'ty	Remarks
1	32001/ZS5030	Knurled knob	1	
2	32002/ZS5030	Knurled screw bolt	1	
3	32001/ZS5030A	Scaled bolt	1	
4	35001/ZS5030	Scaled indicator sheet	1	
5	32004/ZS5030	Support for the indicator	1	
6	31002/ZS5030A	Scaled nut	1	
7	32005/ZS5030	Positioning block	1	
8	32034/ZS5030	Bearing cover	1	
9	31002/ZS5030	Scale clamper	1	
10	32036/ZS5030	Main spindle	1	
11	D7000108; GB276	Bearing	2	
12	32035/ZS5030	Washer	1	
13	8108; GB301	Bearing	1	
14	32038/ZS5030	Spindle quill	1	
15	D1000906; GB276	Bearing	1	
16	32040/ZS5030	Spline sleeve	1	
17	32041/ZS5030	Washer	1	
18	32042/ZS5030	Washer	1	
19	32043/ZS5030	Nut	1	
20	32039/ZS5030	Transmission shaft	1	
21	2007106; GB297	Bearing	1	
22	32046/ZS5030	Bearing seat	1	
23	32005/ZS5030A	Feed gear	1	
24	32006/ZS5030	Gear	1	
25	32008/ZS5030	Gear	1	
26	32007/ZS5030	Bushing	1	
27	7000106; GB276	Bearing	2	
28	50204; GB277	Bearing	1	
29	18; GB858	Washer	1	
30	M18X1.5; GB812	Nut	1	
31	31004/ZS5030	Cover	1	
32	1.222/40-M8; 21101	Knob	2	
33	32032/ZS5030	Lever	2	
34	32031/ZS5030	Lever seat	2	
35	32030/ZS5030	Washer	1	
36	32028/ZS5030	Washer	1	

Model ZN5035A		Ancillary page of Operation Manual	page 3	
Contrast for the parts number of ZN5035A spindle box and its three dimensions sketch.				
No.	Parts number	Name of the parts	Q'ty	Remarks
37	32029/ZS5030	Short fork shaft	1	
38	31013/ZS5030	Lever	1	
39	34007/ZS5030	Front fork	1	
40	34008/ZS5030	Rear fork	1	
41	31013/ZS5030	Lever	1	
42	31014/ZS5030	Shaft sleeve	1	
43	32033/ZS5030	Long fork shaft	1	
44	M18X32; GB4141.27	Knurled handle	1	
45	32045/ ZS5030	Bushing	1	
46	32044/ ZS5030	Positioning shaft	1	
47	31001/ ZS5030A	Spindle box	1	
48	31012/ ZS5030	Cover	1	
49	31008/ ZS5030	Cover	1	
50	50303; GB277	Bearing	1	
51	32002/ ZS5030A	Feed gear	1	
52	32016/ ZS5030	Gear	1	
53	32014/ ZS5030	Gear	1	
54	32010/ ZS5030	Gear	1	
55	32009/ ZS5030	Gear	1	
56	32018/ ZS5030	Spine shaft	1	
57	303; GB276	Bearing	1	
58	31007/ ZS5030	Cover	1	
59	31005/ ZS5030	Bearing cover	1	
60	31006/ ZS5030	Bearing cover	1	
61	50303; GB277	Bearing	1	
62	32013/ ZS5030	Gear	1	
63	32012/ ZS5030	Gear	1	
64	32011/ ZS5030	Gear	1	
65	32015/ ZS5030	Spline shaft	1	
66	108; GB276	Bearing	1	
67	50202; GB277	Bearing	1	
68	32006/ ZS5030A	Spline shaft (III)	1	
69	32004/ ZS5030A	Feed gear	1	
70	32010/ ZS5030A	Feed gear	1	
71	32009/ ZS5030A	Feed gear	1	
72	202; GB276	Bearing	1	

Model ZN5035A		Ancillary page of Operation Manual		page 4
Contrast for the parts number of ZN5035A spindle box and its three dimensions sketch.				
No.	Parts number	Name of the parts	Q'ty	Remarks
73	32007/ ZS5030A	Bearing cover	1	
74	32008/ ZS5030A	Feed gear	1	
75	32027/ ZS5030A	Cover	1	
76	M10X1; GB812	Nut	1	
77	10; GB858	Washer	1	
78	101; GB276	Bearing	1	
79	32025/ ZS5030A	Washer	1	
80	8101; GB301	Bearing	1	
81	32024/ ZS5030A	Washer	1	
82	32026/ ZS5030A	Bearing seat	1	
83	8102; GB301	Bearing	1	
84	32023/ ZS5030A	Warm shaft	1	
85	1000905;GB276	Bearing	1	
86	32022/ZS5030A	Clutch seat(below)	1	
87	32018/ ZS5030A	Overload protection sleeve	1	
88	32020/ ZS5030A	Nut	1	
89	32017/ ZS5030A	Washer	1	
90	32012/ ZS5030A	Spine shaft (IV)	1	
91	32016/ ZS5030A	Feed gear	1	
92	32015/ ZS5030A	Feed gear	1	
93	32014/ ZS5030A	Feed gear	1	
94	32013/ ZS5030A	Sleeve	1	
95	302; GB276	Bearing	1	
96	32011/ ZS5030A	Bearing cover	1	
97	34008/ ZS5030A	Fork	1	
98	31006/ ZS5030A	Connection block	1	
99	32037/ ZS5030A	Shaft	1	
100	31003/ ZS5030A	Cover	1	
101	32035/ ZS5030A	Positioning board	1	
102	32036/ ZS5030A	Lever seat	1	
103	32038/ ZS5030A	Lever	1	
104	31011/ ZS5030	Spring box cover	1	
105	32024/ ZS5030	Washer	2	
106	104;GB276	Bearing	1	
107	32027/ ZS5030	Bearing cover	1	
108	32028/ ZS5030A	Cross shaft	1	

[illegible]

drawing 2. picture of dimensions sketch of column and bracket parts structure



Model ZN5035A		Ancillary page of Operation Manual	page 7	
Contrast for the parts number of ZN5035A column and bracket and its three dimension sketch.				
No.	Parts number	Name of the parts	Q'ty	Remarks
1	11001/ZS5030	Base	1	
2	12008/ZS5030	Cover board	1	
3	12007/ZS5030	Cover board	1	
4	11010/ZS5030	Column	1	
5	11011/ZS5030	Cover	1	
6	12004/ZS5030	Rack	1	
7	11002/ZS5030	Stop ring seat (below)	1	
8	11003/ZS5030	Stop ring (below)	1	
9	11009/ ZS5030	Up and down device	1	
10	11006/ ZS5030	Up connection seat	1	
11	12010/ ZS5030	Positioning shaft	1	
12	12005/ ZS5030	T type screw bolt	4	
13	11008/ZS5030	Bracket seat	1	
14	11004/ZS5030	Rind	1	
15	11007/ZS5030	Worktable	1	
16	M10x50;GB4141.14	Long hand quill	1	
17	M10x80;GB4141.15	Hand lever	1	
18	12011/ZS5030	Lever seat	1	
19	12009/ZS5030	Double end bolt	1	
20	M10; GB6172	Thin nut	1	
21	M10;GB923	Cover type nut	1	
22	12019/ZS5030	Washer	1	
23	12016/ZS5030	Gear	1	
24	11017/ ZS5030	Sleeve	1	
25	12017/ZS5030	Tilted gear	1	
26	12018/ZS5030	Shaft	1	
27	12014/ZS5030	Worm	1	
28	8103;GB301	Bearing	1	
29	11015/ZS5030	Up and down side cover	1	
30	11016/ZS5030	Flange	1	
31	11014/ZS5030	Lever for bracket	1	
32	M10x80;GB4141.5	Lever for turning	1	
33	M12;GB923	Cover type nut	2	
34	M12;GB6172	Thin nut	2	
35	12015/ZS5030	Double end bolt	2	
36	12013/ZS5030	Washer	1	

[illegible]