



9317 OUTSIDE CALIPER

- Material: Polished steel with hardened points.



| ITEM NO. | 5704196+ | L MM | MAX. GRIP WIDTH MM | G | 1 |
|-----------|----------|---------|-----------------------|-----|---|
| 9317-0150 | 032184 | 150 | 260 | 71 | 1 |
| 9317-0200 | 032191 | 200 | 380 | 99 | 1 |
| 9317-0300 | 032207 | 300 | 500 | 223 | 1 |
| 9317-0400 | 032214 | 400 | 650 | 325 | 1 |
| 9317-0500 | 032221 | 500 | 840 | 462 | 1 |

9350 FEELER GAUGES

- With locking screw.
- Conical shaped blades.
- Material: Hardened spring steel.



| ITEM NO. | 5704196+ | BLADES | CONTENT MM | LENGTH MM | G | 1 |
|-----------|----------|--------|---|--------------|-----|---|
| 9350-0013 | 031910 | 13 | 0,05-0,10-0,15-0,20-0,25-0,30-0,40-0,50-0,60-0,70-0,80-0,90-1,00 | 100 | 58 | 1 |
| 9350-0020 | 031927 | 20 | 0,05-0,10-0,15-0,20-0,25-0,30-0,35-0,40-0,45-0,50-0,55-0,60-0,65-0,70-0,75-0,80-0,85-0,90-0,95-1,00 | 100 | 100 | 1 |

9360 CARBIDE TIPPED SCRIBER

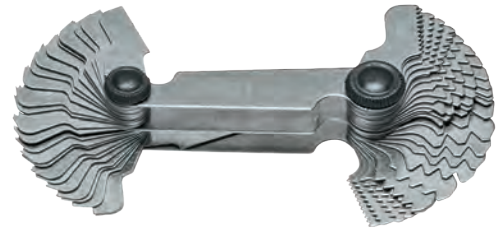
- With Clip.
- With hardened tip.
- Surface: Chrome finish. Material: Special steel.



| ITEM NO. | 5704196+ | L MM | G | 1 |
|-----------|----------|---------|----|---|
| 9360-0001 | 032283 | 154 | 36 | 1 |

9353 SCREW PITCH GAUGE

- DIN 13/14.
- For inside and outside measurement.
- Blades for 60° metric ISO thread and 55° Whitworth thread.
- Material: Hardened spring steel.

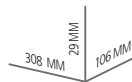


| ITEM NO. | 5704196+ | BLADES | CONTENT MM | G | 1 |
|-----------|----------|-------------------|--|----|---|
| 9353-0052 | 031934 | 24 (0.25-6.00 mm) | 0,25-0,30-0,35-0,40-0,45-0,50-0,60-0,70-0,75-0,80-0,90-1,00-1,25-1,50-1,75-2,00-2,50-3,00-3,50-4,00-4,50-5,00-5,50-6,00 mm | 65 | 1 |
| | | 28 (4-62 TPI) | 4-4,5-5-6-7-8-9-10-11-12-13-14-16-18-19-20-22-24-25-26-28-30-32-36-40-48-60-62 TPI | | |

9390 S/4 MEASURING SET

ITEM NO. 9390-0004

- Tool set supplied in plastic storage case.



- 498 G
- 5704196 034225
- 1

CONTENT:

| QTY. | DESCRIPTION | SIZE |
|------|--------------------|-----------------------------|
| 1 | Vernier Caliper | 9300 B 0 - 150 mm x 0,05 mm |
| 1 | Outside Micrometer | 9305 0 - 25 mm x 0,01 mm |
| 1 | Steel Ruler | 9340 0 - 150 mm |
| 1 | Flat Square | 9335 70 x 100 mm |

