



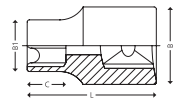
1" SOCKETS AND ACCESSORIES

5001 1" 6-POINT METRIC SOCKETS

ISO 2725-2, DIN 3129

■ Surface: Chrome plated finish. Material: Chrome-vanadium steel.

6

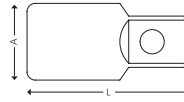


ITEM NO.	5704196+	SIZE MM	B MM	B1 MM	C MM	L MM	G	
5001-0036	026404	36	45	52,0	28	65	470	1
5001-0041	026411	41	45	57,0	32	70	570	1
5001-0046	026428	46	50	65,0	34	75	870	1
5001-0050	026435	50	50	70,0	34	75	1050	1
5001-0055	026442	55	55	76,0	40	80	1250	1
5001-0060	026459	60	55	82,0	42	84	1500	1
5001-0065	026466	65	55	88,0	44	87	1660	1
5001-0070	026473	70	60	94,0	48	93	2200	1
5001-0075	026480	75	60	100,0	52	87	2400	1
5001-0080	026497	80	60	105,0	54	103	3000	1

5634 A 3/4" ADAPTOR FROM 3/4" TO 1"

ISO 3316, DIN 3123

■ Surface: Chrome plated finish. Material: Chrome-vanadium steel.

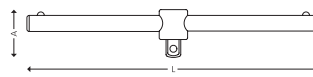


ITEM NO.	5704196+			A MM	L MM	G	
5634-3401	026541	3/4"	1	38	62	390	1

5401 TH 1" SLIDING T-HANDLE

ISO 3316, DIN 3123

■ Surface: Chrome plated finish. Material: Chrome-vanadium steel.

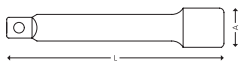


ITEM NO.	5704196+	L MM	A MM	G	
5401-0550	026565	550	80	3340	1

5201 EX 1" EXTENSIONS

ISO 3316, DIN 3123.

■ Surface: Chrome plated finish. Material: Chrome-vanadium steel.



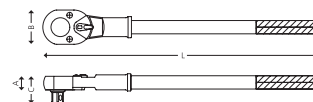
ITEM NO.	5704196+	L MM	A MM	G	
5201-0150	026510	150	48	1100	1
5201-0200	026527	200	48	1350	1
5201-0400	026534	400	48	2480	1

5301 1" REVERSIBLE RATCHET

ISO 3315, DIN 3122

■ Model with 24 teeth. Working angle of 15°.

■ Surface: Chrome plated finish. Material: Chrome-vanadium steel.

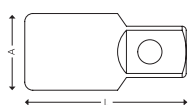


ITEM NO.	5704196+	A MM	B MM	C MM	L MM	G	
5301-0024	026503	33,8	71,5	66,7	670	4410	1

5701 A 1" ADAPTOR FROM 1" TO 3/4"

ISO 3316, DIN 3123

■ Surface: Chrome plated finish. Material: Chrome-vanadium steel.

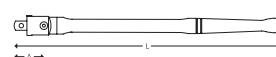


ITEM NO.	5704196+			A MM	L MM	G	
5701-0134	026558	1"	3/4"	48	65	440	1

5901 FH 1" SWIVEL HANDLE - 1000 MM

ISO 3316, DIN 3123

■ Surface: Chrome plated finish. Material: Chrome-vanadium steel.



ITEM NO.	5704196+	L MM	A MM	G	
5901-1000	026398	1000	87	3820	1